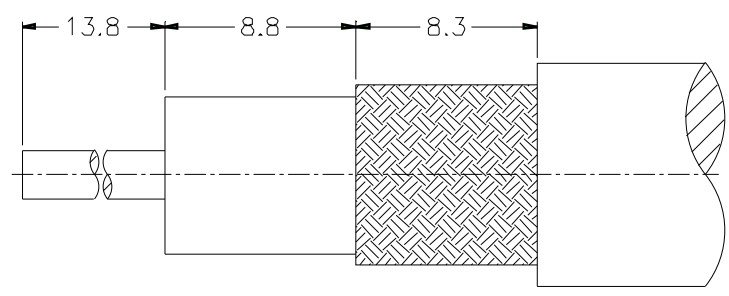
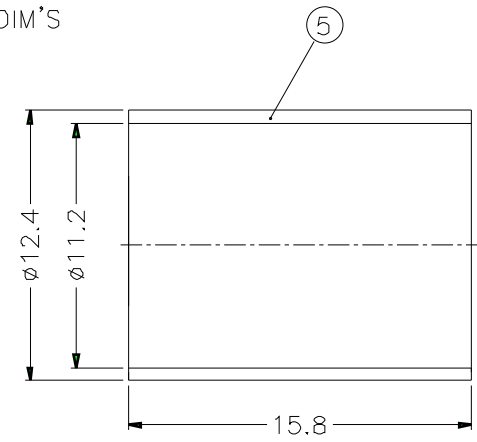


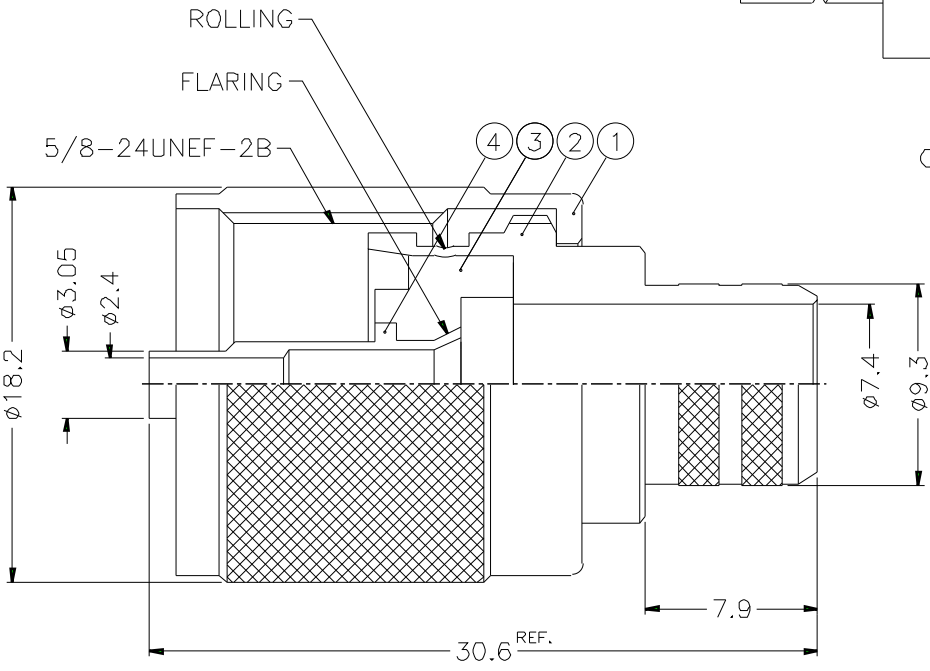
1		2		3		4		5		6		7		8	
REVISIONS															
ISS	ZONE	DESCRIPTION\PER REQUEST\DATE													



RECOMMENDED
CABLE STRIPPING DIM'S



- 1. CRIMPED FERRULE
HEX CRIMP SIZE .429"
- 2. CRIMPED CONTACT PIN
HEX CRIMP SIZE .105"



NOTES: FINISH (PLATING THICKNESS IN MICRO-INCHES)
 1. BRASS PER QQ-B-626
 2. NICKEL PL. 100 MIN. THICK OVER COPPER STRIKE
 3. GOLD PL. 3 MIN. THICK OVER NICKEL PL. 100 MIN. THICK OVER COPPER STRIKE
 4. PHENOLIC, YELLOW PER PANTONE 110C
 5. JIS H 3250, C 2700

DIMENSIONS ARE IN MILLIMETERS			
UNLESS OTHERWISE SPECIFIED TOLERANCES			
0.5-6	=	±	0.2
6-30	=	±	0.4
30-120	=	±	0.6
120-315	=	±	1
315-1000	=	±	1.6
1000-2000	=	±	2.4

PART NO.	U1121A1-NPH3G-7A-50	
APPROVED	DATE	10-11-01'
CHECKED	DATE	10-11-01'
DRAWN	DATE	10-11-01'
FILE NO.		

Amphenol	
TITLE	UHF CRIMP PLUG
DRAWING NO.	KJ-U1121A1-NPH3G-214U-50
ITEM NO.	

NO.	DESCRIPTION	MATERIAL	FINISH	Q'TY	DRAWING NO.
5	FERRULE	NOTE 5	NOTE 2	1	FR-124/112X158
4	CONTACT PIN	NOTE 1	NOTE 3	1	U5000-4-305/24
3	INSULATOR	NOTE 4	NOTE 4	1	U5290-3PHE-50
2	BODY	NOTE 1	NOTE 2	1	U5000-2-93/74
1	SHELL	NOTE 1	NOTE 2	1	U5000-1