

SWITCHING CIRCUIT

SPECIFICATION MODEL : "PS-5" SERIES

RATING: 16A 125VAC, (UL, CSA)

16A 250VAC, (UL, CSA)

16A(4) 250VAC ~ T125/55

(VDE, SEMKO, DEMKO, NEMKO, FIMKO, SEV)

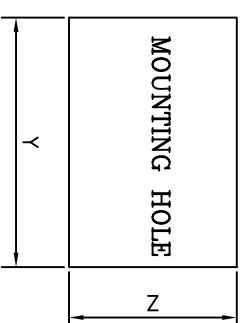
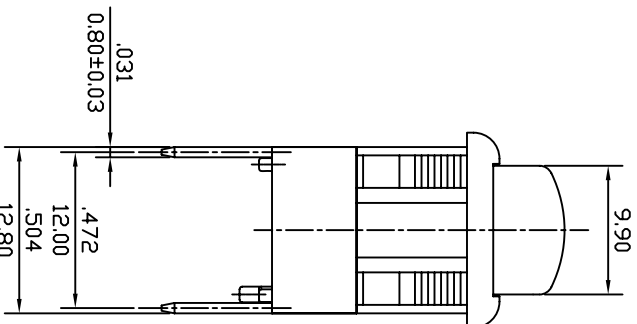
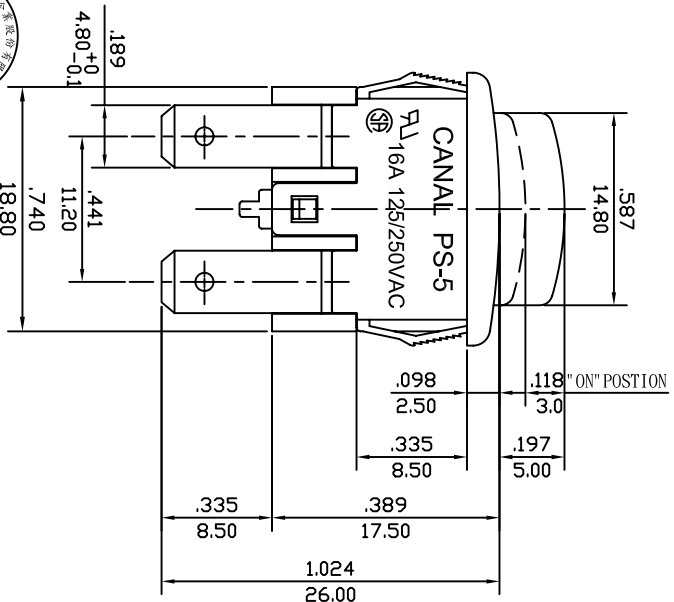
CONTACT RESISTANCE: 20mΩ (MAX),

INSULATION RESISTANCE: 500VDC - 100MΩ (MIN).

WITHSTAND VOLTAGE: 1,000VAC 1 MINUTE.

ILLUMINATED: 200~250VAC

OPERATION: 500±200 GRAM.



X=Panel thickness	Dim. Y	Dim. Z
0.75~1.25mm	19.2±0.1 mm	12.9±0.15 mm
1.25~2mm	19.4±0.1 mm	12.9±0.15 mm
2~3mm	19.8±0.1 mm	12.9±0.15 mm

嘉尼企業股份有限公司  
工程師  
2007.03.08  
文件管制章

NOTE: 1. TOLERANCES UNLESS OTHERWISE SPECIFIED: ±.012 (in/mm)  
2. IT IS IN COMPLIANCE WITH CANAL ROHS SPECIFICATION: WI-QA-24

REVISION	DESCRIPTION	REVISED BY	TOLERANCES	X	XX	ANGLE	1/2°	SCALE	UNIT	PART NAME	PART NO	DWG NO
△				劉義正	DESIGNED BY	劉義正	5/3	mm	PS-5 SPEC DRAWING			S1587A
△				劉義正	CHECKED BY	劉義正						
△				劉義正	APPROVED BY	劉義正						
△	2007.03.08	首次出圖							2007.03.08	PART NO	PS5-210-PG**-S	