

## FEATURES AND SPECIFICATIONS

### Features and Benefits

- Sizes 2 to 9 circuits
- Other plating options available

### Reference Information

Packaging: Bag  
 UL File No.: E29179  
 CSA File No.: LR19980  
 Mates With: 5197-N housing  
 Designed In: Millimeters

### Electrical

Voltage: 250V  
 Current: 7.0A  
 Contact Resistance: 10mΩ max.  
 Dielectric Withstanding Voltage: 1500V AC/1 min.  
 Insulation Resistance: 1000 MΩ min.

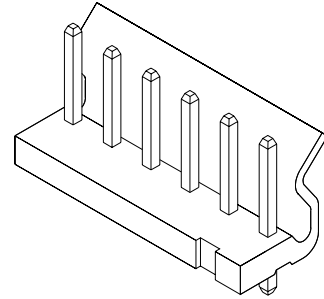
### Physical

Housing: 6/6 nylon, UL 94V-2  
 Contact: Brass, 1.14mm (.045") square  
 Plating: Tin  
 Operating Temperature: -40 to +105°C

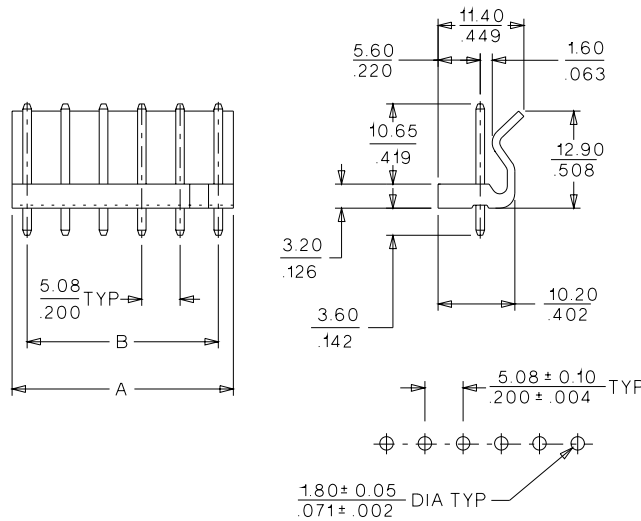
**molex**® **5.08mm (.200") Pitch**  
**SPOX™**  
**Header**

**5281-NA**

**Vertical**  
**Friction Lock**



## CATALOG DRAWING (FOR REFERENCE ONLY)



PCB LAYOUT: COMPONENT SIDE  
 RECOMMENDED PCB THICKNESS: 1.60 ± 0.10mm  
 .063 ± .004mm

## ORDERING INFORMATION AND DIMENSIONS

Circuits	Order No.	Dimension	
		A	B
2	10-32-1021	9.08 (.357)	5.08 (.199)
3	10-32-1031	14.16 (.557)	10.16 (.399)
4	10-32-1041	19.24 (.757)	15.24 (.599)
5	10-32-1051	24.32 (.957)	20.32 (.799)
6	10-32-1061	29.40 (1.157)	25.40 (1.000)
7	10-32-1071	34.48 (1.357)	30.48 (1.199)
8	10-32-1081	39.56 (1.557)	35.56 (1.399)
9	10-32-1091	44.64 (1.757)	40.64 (1.599)

**D**  
**3.00 to 7.92mm (.118 to .312") Pitch**