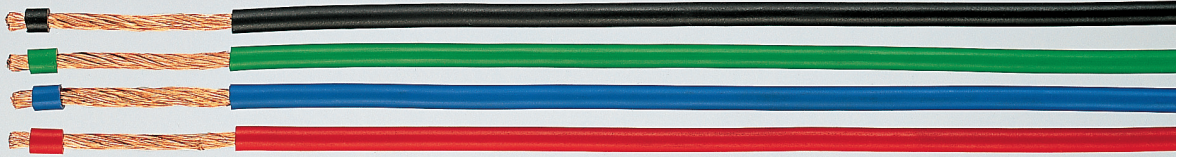


# LifY Single Core 1 kV extra fine wires with highest flexibility



## Technical data

- Special PVC insulated extra fine stranded wires
- Extreme flexible by special design
- Adapted to DIN VDE 0250, 0281, 0295
- **Temperature range**  
-15°C to +80°C
- **Nominal voltage** 1000 V
- **Test voltage** 3000 V
- **Bending radius**, flexing  
approx. 8 x cable Ø

## Cable structure

- Bare copper, extra fine wire conductors, bunch stranded, see table below
- Conductor special stranded
- PVC-core insulation with plasticized and elastic PVC
- PVC self-extinguishing and flame retardant, test method B according to VDE 0472 part 804 and IEC 60332-1

## Application

The LifY single cores are used as super flexible insulated strand wires for switch cabinets, as measuring cable for testing, laboratories, research etc.

- The materials used in manufacture are cadmium-free and contain no silicone and free from substances harmful to the wetting properties of lacquers

CE = The product is conformed with the EC Low-Voltage Directive 73/23/EEC and 93/68/EEC.

Part No.	core colours	No. cores x cross-sec. mm <sup>2</sup>	Conductor-make-up nominal value	Outer Ø ca. mm	Cop. weight kg / km	Weight ca. kg / km	AWG-no. *)
151____		0,1	51 x 0,05	1,0	1,2	2,1	-
152____		0,14	72 x 0,05	1,1	1,4	2,6	26
153____		0,25	65 x 0,07	1,4	2,5	4,2	24
154____		0,5	132 x 0,07	2,0	5,5	8,0	20
155____		0,75	195 x 0,07	2,2	8,0	12,0	18
156____		1	260 x 0,07	2,5	10,8	18,0	17
157____		1,5	192 x 0,10	3,5	15,0	22,0	16
158____		2,5	320 x 0,10	3,8	25,0	37,0	14
159____		4	512 x 0,10	5,0	40,0	50,0	12
15135	gn-ye	6	768 x 0,10	6,5	60,0	71,0	10
15093	bk	6	768 x 0,10	6,5	60,0	71,0	10
15114	rd	6	768 x 0,10	6,5	60,0	71,0	10
15115	bu	6	768 x 0,10	6,5	60,0	71,0	10
15116	bn	6	768 x 0,10	6,5	60,0	71,0	10
15136	gn-ye	10	1280 x 0,10	7,5	100,0	130,0	8
15094	bk	10	1280 x 0,10	7,5	100,0	130,0	8
15117	rd	10	1280 x 0,10	7,5	100,0	130,0	8
15118	bu	10	1280 x 0,10	7,5	100,0	130,0	8
15119	bn	10	1280 x 0,10	7,5	100,0	130,0	8
15137	gn-ye	16	2048 x 0,10	9,0	160,0	187,0	6
15095	bk	16	2048 x 0,10	9,0	160,0	187,0	6
15120	rd	16	2048 x 0,10	9,0	160,0	187,0	6
15121	bu	16	2048 x 0,10	9,0	160,0	187,0	6
15122	bn	16	2048 x 0,10	9,0	160,0	187,0	6

Please **add** the individual part-no. (151\_\_\_\_ to 159\_\_\_\_) for order with the following identification colour code table

____00	green	gn
____01	black	bk
____02	red	rd
____03	blue	bu
____04	brown	bn
____05	white	wh
____06	grey	gy
____07	violet	vt
____08	yellow	ye
____09	orange	og
____10	transparent	tr
____11	pink	pk
____12	beige	bg
____13	twin-colour	t-c

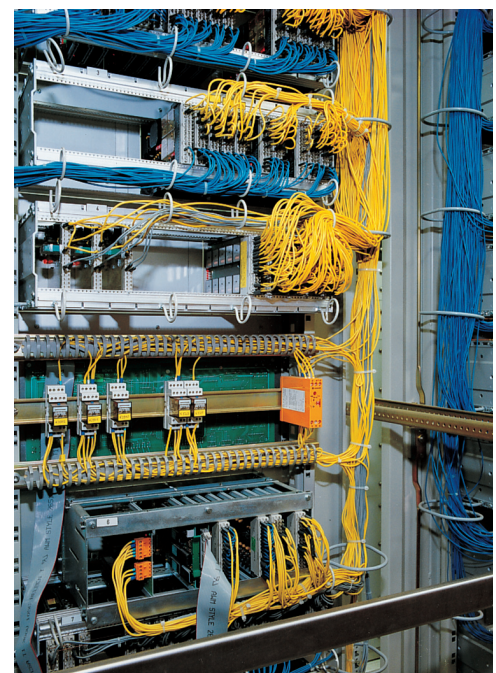
### \*) Note

AWG sizes are approximate equivalent values.  
The actual cross-section is in mm<sup>2</sup> – see page T 15.

### Liffy on request.

PVC cables will be changed to lead free PVC successively.

Part No.	core colours	No. cores x cross-sec. mm <sup>2</sup>	Conductor-make-up nominal value	Outer Ø ca. mm	Cop. weight kg / km	Weight ca. kg / km	AWG-no. *)
15138	gn-ye	25	3234 x 0,10	10,5	240,0	294,0	4
15096	bk	25	3234 x 0,10	10,5	240,0	294,0	4
15123	rd	25	3234 x 0,10	10,5	240,0	294,0	4
15124	bu	25	3234 x 0,10	10,5	240,0	294,0	4
15125	bn	25	3234 x 0,10	10,5	240,0	294,0	4
15139	gn-ye	35	4508 x 0,10	11,7	336,0	380,0	2
15097	bk	35	4508 x 0,10	11,7	336,0	380,0	2
15126	rd	35	4508 x 0,10	11,7	336,0	380,0	2
15127	bu	35	4508 x 0,10	11,7	336,0	380,0	2
15128	bn	35	4508 x 0,10	11,7	336,0	380,0	2
15140	gn-ye	50	6468 x 0,10	14,7	480,0	521,0	1
15098	bk	50	6468 x 0,10	14,7	480,0	521,0	1
15129	rd	50	6468 x 0,10	14,7	480,0	521,0	1
15130	bu	50	6468 x 0,10	14,7	480,0	521,0	1
15131	bn	50	6468 x 0,10	14,7	480,0	521,0	1
15141	gn-ye	70	8967 x 0,10	17,0	672,0	740,0	2/0
15099	bk	70	8967 x 0,10	17,0	672,0	740,0	2/0
15132	rd	70	8967 x 0,10	17,0	672,0	740,0	2/0
15133	bu	70	8967 x 0,10	17,0	672,0	740,0	2/0
15134	bn	70	8967 x 0,10	17,0	672,0	740,0	2/0



Works photo: R. Stahl GmbH