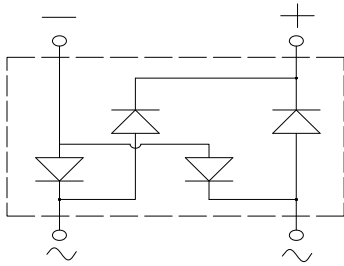
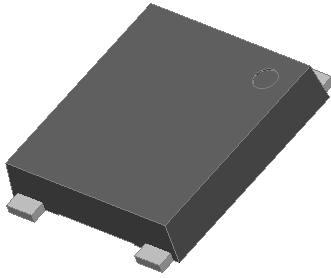


## Bridge Rectifiers



### Features

- UL recognition, file #E313149
- Ideal for automated placement
- High surge current capability
- Meets MSL level 1, per J-STD-020, LF maximum peak of 260 °C

### Typical Applications

General purpose use in AC/DC bridge full wave rectification for SMPS, lighting ballaster, adapter, battery charger, home appliances, office equipment, and telecommunication applications.

### Mechanical Data

- **Package:** YBS  
Molding compound meets UL 94 V-0 flammability rating, RoHS-compliant, Halogen-free
- **Terminals:** Tin plated leads, solderable per J-STD-002 and JESD22-B102
- **Polarity:** As marked on body

### ■ Maximum Ratings (T<sub>a</sub>=25°C Unless otherwise specified)

PARAMETER	SYMBOL	UNIT	YBS30005	YBS3001	YBS3002	YBS3004	YBS3006	YBS3008	YBS3010
Device marking code			YBS30005	YBS3001	YBS3002	YBS3004	YBS3006	YBS3008	YBS3010
Repetitive peak reverse voltage	VRRM	V	50	100	200	400	600	800	1000
Average rectified output current @60Hz sine wave, R-load, T <sub>c</sub> =110°C	I <sub>O</sub>	A	3.0						
Surge(non-repetitive)forward current @60HZ half sine wave, 1 cycle, T <sub>j</sub> =25°C	I <sub>FSM</sub>	A	110						
Current squared time @1ms≤t<8.3ms T <sub>j</sub> =25°C, Rating of per diode	I <sup>2</sup> t	A <sup>2</sup> s	50.21						
Storage temperature	T <sub>stg</sub>	°C	-55 ~+150						
Junction temperature	T <sub>j</sub>	°C	-55 ~+150						

### ■ Electrical Characteristics (T<sub>a</sub>=25°C Unless otherwise specified)

PARAMETER	SYMBOL	UNIT	TEST CONDITIONS	YBS30005	YBS3001	YBS3002	YBS3004	YBS3006	YBS3008	YBS3010
Maximum instantaneous forward voltage drop per diode	V <sub>F</sub>	V	I <sub>FM</sub> =1.5A	1.00						
Maximum DC reverse current at rated DC blocking voltage per diode @ VRM=VRRM	I <sub>R</sub> RM	μA	T <sub>j</sub> =25°C	5						
			T <sub>j</sub> =100°C	100						



# YBS30005 THRU YBS3010

## ■ Thermal Characteristics (T<sub>a</sub>=25°C Unless otherwise specified)

PARAMETER		SYMBOL	UNIT	YBS30005	YBS3001	YBS3002	YBS3004	YBS3006	YBS3008	YBS3010
Thermal Resistance	Between Junction and Ambient,	R <sub>θJ-A</sub>	°C/W	55.0						
	Between Junction and Lead	R <sub>θJ-L</sub>		15.0						
	Between Junction and Case	R <sub>θJ-C</sub>		10.0						

## ■ Ordering Information (Example)

PREFERRED P/N	PACKING CODE	UNIT WEIGHT(g)	MINIMUM PACKAGE(pcs)	INNER BOX QUANTITY(pcs)	OUTER CARTON QUANTITY(pcs)	DELIVERY MODE
YBS30005-YBS3010	F1	Approximate 0.220	3000	6000	42000	13" reel

## ■ Characteristics(Typical)

FIG1: I<sub>o</sub>-T<sub>c</sub> Curve

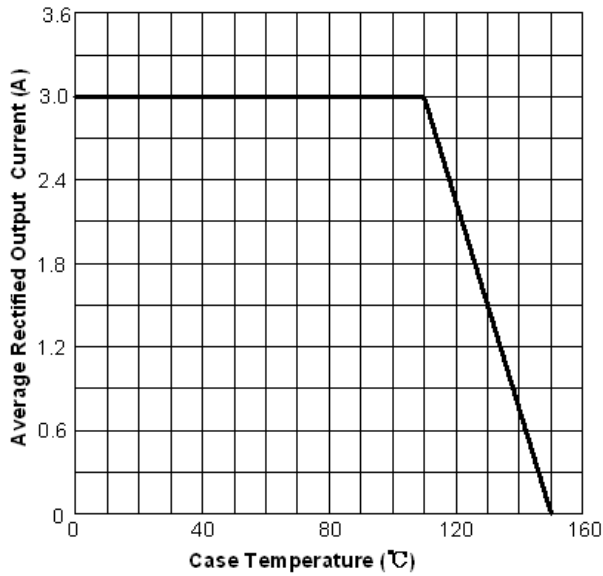


图3: 正向电压曲线

FIG3: Forward Voltage

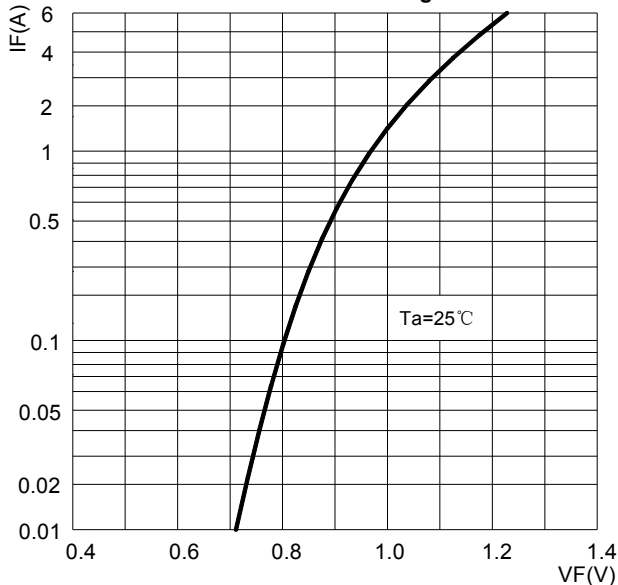


图2: 耐正向浪涌电流曲线  
FIG2: Surge Forward Current Capability

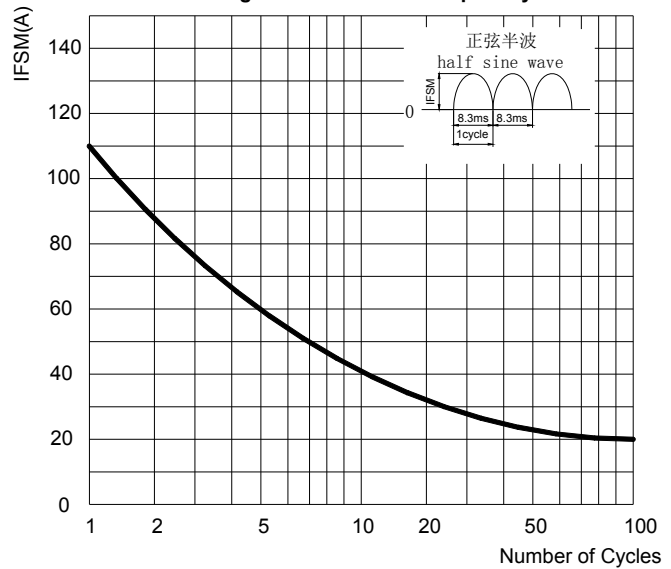
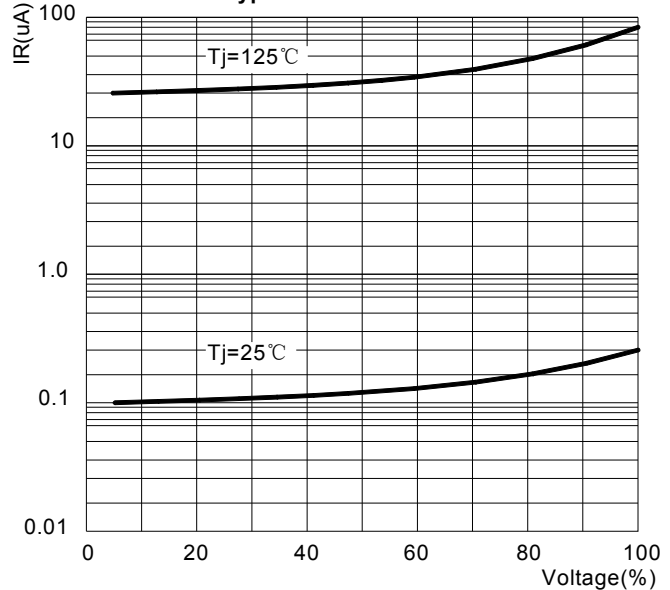


图4: 反向电流曲线

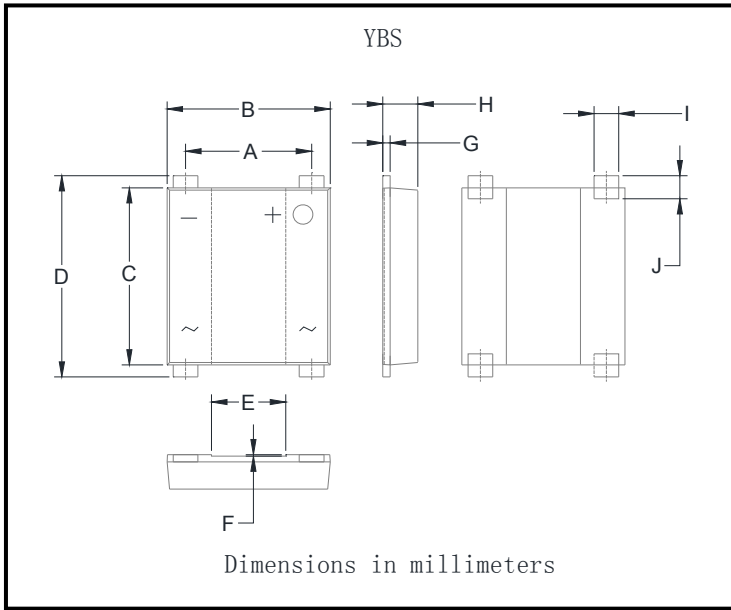
FIG4: Typical Reverse Characteristics





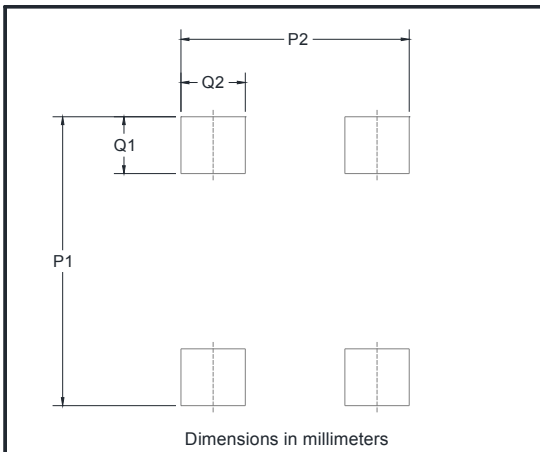
# YBS30005 THRU YBS3010

## ■ Outline Dimensions



YBS		
Dim	Min	Max
A	5.00	5.20
B	6.50	6.70
C	7.20	7.40
D	7.90	8.60
E	2.90	3.10
F	0.04	0.08
G	0.27	0.40
H	1.30	1.50
I	0.95	1.15
J	0.70	1.05

## ■ Suggested pad layout



Dim	Min
P1	9.15
P2	7.10
Q1	1.80
Q2	2.00



## YBS30005 THRU YBS3010

---

### Disclaimer

The information presented in this document is for reference only. Yangzhou Yangjie Electronic Technology Co., Ltd. reserves the right to make changes without notice for the specification of the products displayed herein to improve reliability, function or design or otherwise.

The product listed herein is designed to be used with ordinary electronic equipment or devices, and not designed to be used with equipment or devices which require high level of reliability and the malfunction of which would directly endanger human life (such as medical instruments, transportation equipment, aerospace machinery, nuclear-reactor controllers, fuel controllers and other safety devices), Yangjie or anyone on its behalf, assumes no responsibility or liability for any damages resulting from such improper use of sale.

This publication supersedes & replaces all information previously supplied. For additional information, please visit our website [http:// www.21yangjie.com](http://www.21yangjie.com) , or consult your nearest Yangjie's sales office for further assistance.