

turned crimp contact, female for wire gauge 1,5mm²

Part No. VN02 025 0037 1C

Series

Subseries



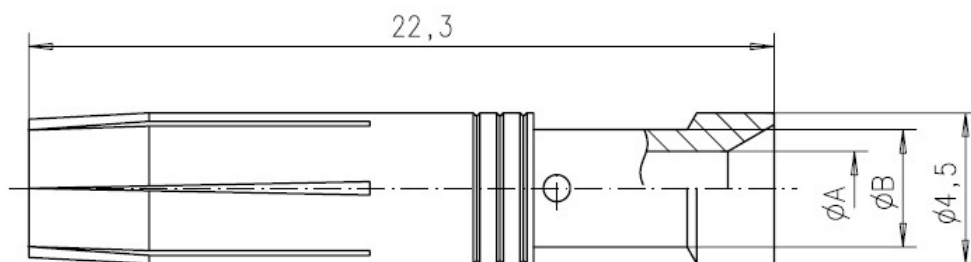
| COMMON CHARACTERISTICS | | |
|----------------------------|--|----------------------|
| Contact diameter | | 2,5 mm |
| Wire gauge from | | 1,5mm ² |
| Wire gauge (AWG) from | | 16 |
| Packaging / supplied as | | Single contact |
| No. of pieces | | 100 |
| Sex of Contact | | Socket |
| Type of contact | | Turned crimp contact |
| CLIMATICAL CHARACTERISTICS | | |
| Upper temperature | | + 125 °C |
| Lower temperatur | | - 40 °C |
| MECHANICAL CHARACTERISTICS | | |
| Mechanical lifetime | | 500 mating cycles |

turned crimp contact, female for wire gauge 1,5mm²

Part No. VN02 025 0037 1C

Series

Subseries



Drawing Dimensions in mm (Inch)

24.06.2013