

CENTRAL RADIO ROLLER BLINDS CONTROLLER SRP-03

MANUAL INSTRUCTION



ZAMEL Sp. z o.o.

zameL

ul. Zielona 27, 43-200 Pszczyna, Poland
tel. +48 (32) 210 46 65, fax +48 (32) 210 80 04
www.zamelcet.com, e-mail: marketing@zamel.pl

DESCRIPTION

Radio roller blinds controller SRP-03 is used to realise central control function of roller blind drives. The device generates central control impulses (full opening or closing of a single roller blind or a group of roller blinds, the impulse is 0,5 second long). SRP-03 device can be used as an element of wireless (EXTA FREE system transmitters) or wired (roller blind switches) central control - which allows for integration of wired roller blinds switches (SRM-10, SRP-01 or devices of different manufacturers) with wireless EXTA FREE control system.

FEATURES

- used in wired and wireless central (group) control of roller blind, sunblind and gate drives, (electric motors of 230V AC),
- inputs of wired roller blind central control,
- integration with wired roller blind switches SRM-10 and SRP-01 or devices of different manufacturers,
- energy-saving device, possibility of constant work,
- possibility of cooperation with any roller blind switch (which is not equipped in backlight elements),

TECHNICAL DATA

SRP-03	
Input (supply) terminals:	L, N
Input rated voltage:	230V AC
Input voltage tolerance:	-15 ÷ +10 %
Nominal frequency:	50 / 60 Hz
Nominal power consumption:	0,4 W („stand-by” mode) / 0,7 W (operation mode)
Transmission:	radio 868,32 MHz
Coding way:	unidirectional
Coding:	addressing transmission
Maximum number of transmitters:	32
Range:	up to 250 m in the open area
Optic signalling of transmitter's operation:	LED red diode
Control terminals:	LOCAL/CENTRAL ▲ (up), ▼ (down)
Roller blind motor power supply terminals:	OUT ▲ (up), ▼ (down)
Relay contact parameters:	2NO 5A / 250V~ AC1 1250 VA (voltage contacts)
Number of terminal clamps:	6
Section of connecting cables:	0,2 ÷ 2,50 mm ²
Ambient temperature range:	-10 ÷ +55 °C
Operating position:	free
Casing mounting:	installation cable box Ø60 mm
Casing protection degree:	IP20 (EN 60529)
Protection level:	II
Overvoltage category:	II
Pollution degree:	2
Surge voltage:	1 kV (EN 61000-4-5)
Dimensions:	47,5 x 47,5 x 20 mm
Weight:	0,039 kg
Reference standard:	EN 60669, EN 60950, EN 61000



CAUTION! The device is designed for single-phase installation and must be installed in accordance with standards valid in a particular country. The device should be connected according to the details included in this operating manual. Installation, connection and control should be carried out by a qualified electrician staff, who act in accordance with the service manual and the device functions.

In case of casing dismantling an electric shock may occur, and the guarantee is lost then. Before installation make sure the connection cables are not under voltage. The cruciform head screwdriver 3,5 mm should be used to instal the device. Improper transport, storage, and use of the device influence its wrong functioning. It is not advisable to instal the device in the following cases: if any device part is missing or the device is damaged or deformed. In case of improper functioning of the device contact the producer.



The symbol means selective collecting of electrical and electronic equipment. It is forbidden to put the used equipment together with other waste

APPEARANCE

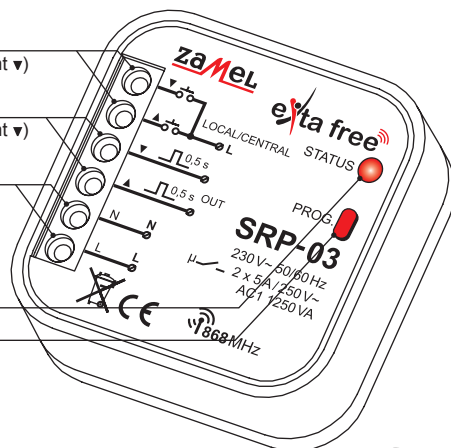
Central wired control terminals
(upward movement ▲, downward movement ▼)

Signal control output terminals
(upward movement ▲, downward movement ▼)

Input (supply) terminals (L, N)

Optic signalling of receiver's operation

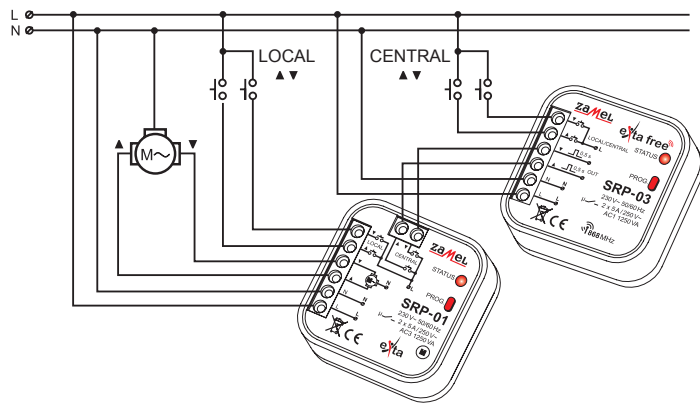
Programming push-button



The ZAMEL company devices which are characterised with this sign can cooperate with each other



CONNECTION

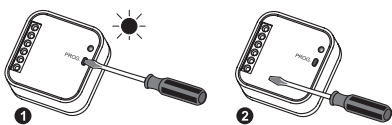


MOUNTING

1. Disconnect power supply by the phase fuse, the circuit-breaker or the switch-disconnector combined to the proper circuit.
2. Check if there is no voltage on connection cables by means of a special measure equipment.
3. Connect the cables with the terminals in accordance with the installing diagram.
4. Install SRP-03 device in installation cable box.
5. Switch on the power supply from the mains.

Caution: connection of wired switches (LOCAL/CENTRAL) is optional.

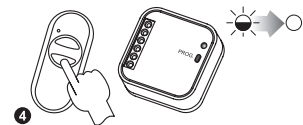
RADIO TRANSMITTERS PROGRAMMING



Press PROG push-button of SRP-03 device for a longer time until LED red diode switches on (constant signal). Next release PROG push-button.



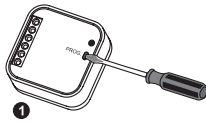
Press and release transmitter's first push-button (movement ▲). LED red diode switches on (first signal pulsates, next the signal is constant).



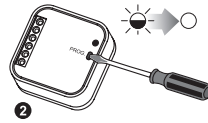
Press and release the second transmitter's push-button (movement ▼). LED red diode switches on (signal pulsates) and then switches off - THE TRANSMITTER IS ADDED.

An exemplary programming procedure of P-257/2 remote control. The procedure for the rest of radio EXTA FREE transmitters is analogous.

RADIO TRANSMITTERS DELETION



Press PROG push-button of SRP-03 device for a longer time.

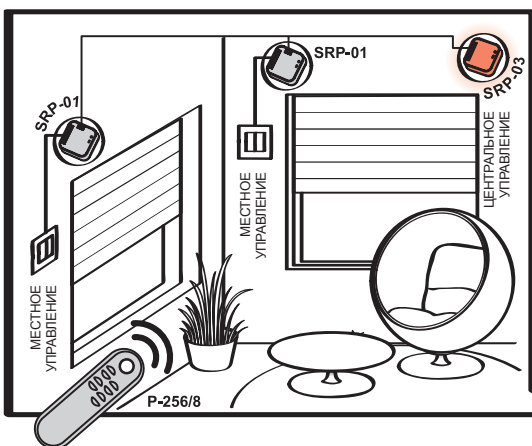


After 5 seconds LED red diode switches on (signal pulsates) and then it switches off.



Release the push-button in SRP-03 - MEMORY IS DELETED.

APPLICATION



Roller blinds control system realised by means of wired roller blind controllers SRP-01. One controller can be used for one roller blind. Each of the controllers has a local control push-button and connected inputs of central control, which allow to close or open a given group of roller blinds by means of SRP-03 device - central roller blinds controller. SRP-03 is operated in a wireless way by means of 8-channel remote control P-256/8. Roller blinds switches can not be equipped with backlight.

OPERATION RANGE

Transmitter	SRP-03	Transmitter	SRP-03
RNK-02	200 m	RNP-02	180 m
RNK-04	200 m	RNL-01	brak*
P-256/8	250 m	RTN-01	200 m
P-257/4 (2)	200 m	RCR-01	brak*
RNM-10	250 m	RTI-01	180 m
RNP-01	180 m	RXM-01	250 m

* 1-channel transmitters do not cooperate with roller blind controllers.

CAUTION: The given range concerns open area - an ideal condition without any natural or artificial obstacles. If there are some obstacles between a transmitter and a receiver, it is advisable to decrease the range according to: wood and plaster: from 5 to 20 %, bricks: from 10 to 40 %, reinforced concrete: from 40 to 80 %, metal: from 90 to 100%, glass: from 10 to 20 %. Over- and underground medium and high electrical power lines, radio and television transmitters, GSM transmitters set close to a device system have also a negative influence on the range.

WARRANTY CARD

There is 24 months guarantee on the product

1. ZAMEL provides a two-year warranty for its products.
2. The ZAMEL warranty does not cover: a) mechanical defects resulting from transport, loading / unloading or other circumstances b) defects resulting from incorrect installation or operation of ZAMEL products; c) defects resulting from any changes made by CUSTOMERS or third parties, to products sold or equipment necessary for the correct operation of products sold; d) defects resulting from force majeure or other aleatory events for which ZAMEL is not liable; e) power supply (batteries) to be equipped with a device in the moment of sale (if they appear);
3. All complaints in relation to the warranty must be provided by the CUSTOMER in writing to the retailer after discovering a defect.;
4. ZAMEL will review complaints in accordance with existing regulations.;
5. The way a complaint is settled, e.g. replacement of the product, repair or refund, is left to the discretion of ZAMEL.
6. Guarantee does not exclude, does not limit, nor does it suspend the rights of the PURCHASER resulting from the discrepancy between the goods and the contract.

Salesman stamp and signature, date of sale