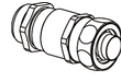
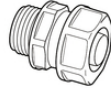


## SILVYN® FPS

SILVYN® FPS is a highly flexible protection conduit made of PVC



SILVYN® MSK-M



SILVYN® USK/USK-M  
IP54



SILVYN® US/US-M + EE-K  
IP54



SILVYN® LKI/LKI-M  
IP54



SILVYN® EE-K



Waterproof



Power chain



Corrosion-resistant

### Benefits

- Dimensionally stable
- Crushable and extendable
- Highly oil and acid-resistant
- Liquidtight
- Corrosion-resistant

### Application range

- Mechanical engineering
- In drag chains (SILVYN® CHAIN)
- Robot-building
- Moving applications
- Indoor applications

### Product features

- Cadmium-free

### Product Make-up

- PVC-insulated steel spring wire
- Soft PVC outer sheath

**SILVYN® FPS****Note**

PU = 50 m (on request)

**Technical Data**

Classification:	ETIM 5.0 Class-ID: EC001177 ETIM 5.0 Class-Description: Protective plastic hose
Colour delivered:	Grey
Material:	Soft PVC with insulated spring steel wire
Temperature range:	-25°C to +80°C

**Note**

Photographs are not to scale and do not represent detailed images of the respective products.  
Prices are net prices without VAT and surcharges. Sale to business customers only.

**SILVYN® FPS**

Article number	Nominal size	ID x OD mm	Bending radius (mm)	Suitable for SILVYN® USK-M/US-M	Suitable for SILVYN® LKI-M/MSK-M	Suitable for SILVYN® USK/US/LKI/EE-K
<b>SILVYN® FPS</b>						
61711550	10	7 x 10	8	10 x 1,0	12 x 1,5	7
61711590	14	10 x 14	10	12 x 1,5	16 x 1,5	9
61711630	17	13 x 17	13	16 x 1,5	20 x 1,5	11
61711670	19	15 x 19	15	-	-	13,5
61711710	21	16 x 21	17	20 x 1,5	25 x 1,5	16
61711750	27	22 x 27	20	25 x 1,5	32 x 1,5	21
61711790	36	29 x 36	25	32 x 1,5	40 x 1,5	29
61711830	45	38 x 45	36	40 x 1,5	50 x 1,5	36
61711910	56	48 x 56	40	50 x 1,5	63 x 1,5	48
<b>SILVYN® FPS 10M</b>						
61721690	10	7 x 10	8	10 x 1,0	12 x 1,5	7
61721700	14	10 x 14	10	12 x 1,5	16 x 1,5	9
61721710	17	13 x 17	13	16 x 1,5	20 x 1,5	11
61721720	19	15 x 19	15	-	-	13,5
61721730	21	16 x 21	17	20 x 1,5	25 x 1,5	16
61721740	27	22 x 27	20	25 x 1,5	32 x 1,5	21
61721750	36	29 x 36	25	32 x 1,5	40 x 1,5	29
61721760	45	38 x 45	36	40 x 1,5	50 x 1,5	36
61721780	56	48 x 56	40	50 x 1,5	63 x 1,5	48

Last Update (26.07.2017)

©2017 Lapp Group - Technical changes reserved

Product Management [www.lappkabel.de](http://www.lappkabel.de)You can find the current technical data in the corresponding data sheet.  
PN 0456 / 02\_03.16