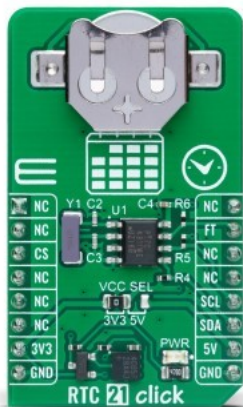


## RTC 21 click



PID: MIKROE-5541

**RTC 21 Click** is a compact add-on board that accurately keeps the time of the day. This board features the [PT7C4311](#), an I2C-configurable real-time clock module with programmable square-wave output from [Diodes Incorporated](#). The PT7C4311 includes time and calendar functions providing various information such as hour, minute, second, day, date, month, year, and century. It operates in a 24-hour format indicator, has automatic leap year compensation, and low power consumption, allowing it to be used with a single button cell battery for an extended period. This Click board™ is suitable for various time-keeping applications, including daily alarms, metering applications, and others requiring an accurate RTC for their operation.

RTC 21 Click is supported by a [mikroSDK](#) compliant library, which includes functions that simplify software development. This [Click board™](#) comes as a fully tested product, ready to be used on a system equipped with the [mikroBUS™](#) socket.

Mikroe produces entire development toolchains for all major microcontroller architectures.

Committed to excellency, we are dedicated to helping engineers bring the project development up to speed and achieve outstanding results.



ISO 27001: 2013 certification of informational security management system.  
 ISO 14001: 2015 certification of environmental management system.  
 OHSAS 18001: 2008 certification of occupational health and safety management system.



ISO 9001: 2015 certification of quality management system (QMS).

## Specifications

Type	RTC
Applications	Can be used for various time-keeping applications, including daily alarms, metering applications, and others requiring an accurate RTC for their operation
On-board modules	PT7C4311 - real-time clock (RTC) from Diodes Incorporated
Key Features	Low power consumption, programmable square-wave output, high-speed I2C interface, clock/calendar counter, 24-hour format, 56 bytes RAM, automatic leap year compensation, automatic backup switchover, and more
Interface	I2C
Compatibility	mikroBUS
Click board size	M (42.9 x 25.4 mm)
Input Voltage	3.3V or 5V

## Resources

[mikroBUS™](#)

[mikroSDK](#)

[Click board™ Catalog](#)

[Click boards™](#)

## Downloads

[RTC 21 click example on Libstock](#)

[RTC 21 click 2D and 3D files](#)

[PT7C4311 datasheet](#)

[RTC 21 click schematic](#)

Mikroe produces entire development toolchains for all major microcontroller architectures.

Committed to excellency, we are dedicated to helping engineers bring the project development up to speed and achieve outstanding results.



ISO 27001: 2013 certification of informational security management system.  
 ISO 14001: 2015 certification of environmental management system.  
 OHSAS 18001: 2008 certification of occupational health and safety management system.



ISO 9001: 2015 certification of quality management system (QMS).