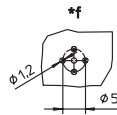
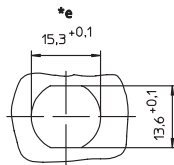
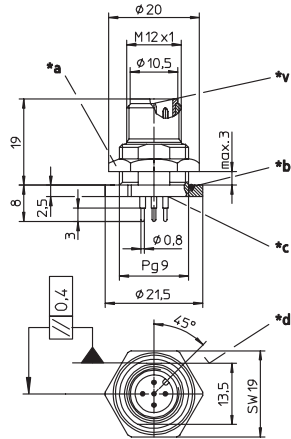


### RSHL /S 5,5

Einbausteckverbinder, M12-Stecker für die Hinterwandmontage, Printkontakte, einbauseitig PG 9-Verschraubung (Befestigung über RSKF 9)

Receptacle connector, M12 male connector for rear mounting, print contacts, chassis side thread PG 9 (panel nut RSKF 9)

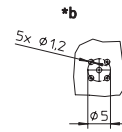
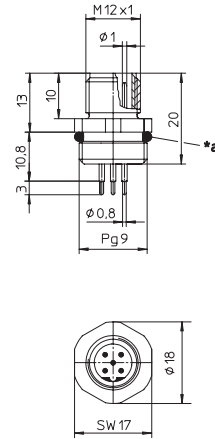


- \*a Mutter nut
- \*b O-Ring O-ring
- \*c Leiteranschlussbereich vergossen solder contacts potted with epoxy
- \*d Verdrehschutz anti-rotation protection
- \*e Einbauöffnung für Verdrehschutz cut out for anti-rotation
- \*f Lochbild in der Leiterplatte hole pattern in printed circuit board
- \*v Mittelkontakt voreilend center contact leading

### 0976 PMC 152

Einbausteckverbinder, M12-Stecker für die Frontmontage, 5-polig, B-codiert, Printkontakte, einbauseitig PG 9-Verschraubung – besonders geeignet für Profibus –

Receptacle connector, M12 male connector for front mounting, 5 poles, B coding, print contacts, chassis side thread PG 9 – especially suitable for Profibus –



- \*a O-Ring O-ring
- \*b Lochbild in der Leiterplatte hole pattern in printed circuit board

### Pinbelegung Pin assignment

4-polig  
4 poles



5-polig  
5 poles



Kontakt 5 voreilend /  
Contact 5 leading

5-polig B-codiert  
5 poles B coding











Kontakt 5 voreilend /  
Contact 5 leading

8-polig  
8 poles



Technische Daten		Technical data	
<b>Umgebungstemperatur</b>	RSHL: -25°C / +80°C 0976 PMC 152: -25°C / +90°C	<b>Operating temperature range</b>	RSHL: -25°C / +80°C 0976 PMC 152: -25°C / +90°C
<b>Werkstoffe</b>		<b>Materials</b>	
Gehäuse / Griffkörper	CuZn, vernickelt	Housing / Molded body	CuZn, nickel-plated
Kontaktträger	RSHL: PA 0976 PMC 152: TPU, selbstverlöschend	Insert	RSHL: PA 0976 PMC 152: TPU, self-extinguishing
Kontakt	CuZn, unternickelt und 0,8 µm vergoldet	Contact	CuZn, pre-nickelated and 0.8 microns gold-plated
O-Ring	FKM	O-ring	FKM
<b>Mechanische Daten</b>		<b>Mechanical data</b>	
Schutzart	IP 67 Nur im verschraubten Zustand mit den dazugehörigen Gegenstücken.	Degree of protection	IP 67 Only in locked position with its proper counterparts.
Anschlussart	Printlötung	Mode of connection	printed circuit board mount
<b>Elektrische Daten</b>		<b>Electrical data</b>	
Durchgangswiderstand	≤ 5 mΩ	Contact resistance	≤ 5 mΩ
Nennstrom bei 40°C	4- bis 5-polig 4 A 8-polig 2 A	Nominal current at 40°C	4–5 poles 4 A 8 poles 2 A
Nennspannung	RSHL: 4-polig 240 V; 5- bis 8-polig 60 V bei gekapseltem Einbau	Nominal voltage	RSHL: 4 poles 240 V; 5–8 poles 60 V encapsulated
Bemessungsspannung	0976 PMC 152: 60 V RSHL: 4-polig 250 V; 5- bis 8-polig 63 V	Rated voltage	0976 PMC 152: 60 V RSHL: 4 poles 250 V; 5–8 poles 63 V
Prüfspannung	0976 PMC 152: 63 V 4-polig 2,0 kV eff. / 60 s 5- bis 8-polig 1,5 kV eff. / 60 s	Test voltage	0976 PMC 152: 63 V 4 poles 2.0 kV eff. / 60 s 5–8 poles 1.5 kV eff. / 60 s
Isolationswiderstand	> 10 <sup>9</sup> Ω	Insulation resistance	> 10 <sup>9</sup> Ω
Verschmutzungsgrad	3	Pollution degree	3

Bestellbezeichnung Designation	Polzahl Poles	
RSHL 4/S 5,5	4	 
RSHL 5/S 5,5	5	 
RSHL 5B/S 5,5	5B	 
	0976 PMC 152	 
RSHL 8/S 5,5	8	