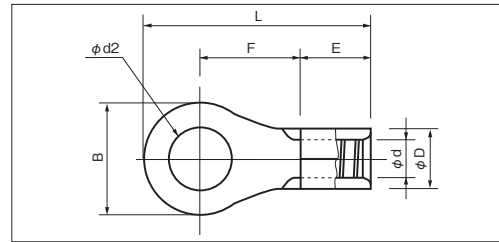


RING TERMINALS (R TYPE)

JIS C 2805

■ R TYPE



A



PART NUMBER	DIMENSIONS mm							WIRE RANGE			TOOL No.		STD QTY/BOX	
	φ d2	B	L	F	E	φ D	φ d	SOLID mm	STRANDED mm ²	AWG	HAND TOOL No.			
											TOOL BODY No.	DIES No.		
R 3.5-4S ※	4.3	7.0	17.5	8.0	6.0	5.1	3.0	1.82 ∩ 2.4	2.63 ∩ 4.6	12	NH 1 NH 9	NA 10 NA 3	N10 03 N3 7	1,000 (100×10)
R 3.5-4 ○		8.0	18.0											
R 3.5-5N ※ ○	5.3	9.6	20.0	9.2										
R 3.5-5S ○		12.0	21.4	9.4										
R 3.5-5L ○		9.6	20.0	9.2										
R 3.5-6L ○	6.4	12.0	21.4	9.4										
R 3.5-8 ○	8.4	13.5	25.5	12.75										
R 5.5-3M ○	3.2	6.5	16.95	7.2	6.5	5.6	3.4	1.82 ∩ 2.89	2.63 ∩ 6.64	12-10	NH 1 NH 9	NA 10 NA 3	N10 03 N3 7	1,000 (100×10)
R 5.5-3N ○		7.0	17.2											
R 5.5-3S ○	9.0	18.2												
R 5.5-3.5N ○	7.0	17.2												
R 5.5-3.5S ○	3.7	9.0	18.2											
R 5.5-3.5 ○		9.5	19.5	8.25										
R 5.5-4N ○	4.3	7.0	17.2	7.2										
R 5.5-4S ○		9.0	18.2	8.25										
R 5.5-4 ●		9.5	19.5	8.25										
R 5.5-5N ○	5.3	8.0	17.7	7.2										
R 5.5-5S ○		9.0	18.2	8.25										
R 5.5-5 ●	9.5	19.5	8.25											
R 5.5-6S ※	6.4	9.0	23.0	12.0										
R 5.5-6 ●		12.0		10.5										
R 5.5-8 ●	8.4	15.0	28.0	14.0										
R 5.5-10 ●	10.5													
R 5.5-12 ○	13.0													
R 5.5-14 ○	15.0	19.2	32.5	16.4										
R 8-4S ○	4.3	8.0	21.5	9.1	8.4	7.1	4.5	2.89 ∩ 3.65	6.64 ∩ 10.52	8	NH 1 NH 9 NOP 60 NOM 60	NA 20 NA 3	N20 08	1,000 (100×10)
R 8-4 ○		12.0	23.5	9.1										
R 8-5N ※	5.3	9.0	22.0	9.1										
R 8-5S ○		10.0	22.5	9.1										
R 8-5 ●		12.0	23.5											
R 8-6S ○	6.4	10.0	22.5	13.6										
R 8-6 ●		12.0	23.5											
R 8-8 ●	8.4	15.0	29.5	13.6										
R 8-10 ●	10.5	20.0	33.5	15.1										
R 8-12 ○	13.0													
R 8-14 ○	15.0													
R 14-5N ※	5.3	9.0	26.0	11.5										
R 14-5S ○		10.0	26.5											
R 14-5 ●	12.0	27.5												
R 14-6S ○	6.4	10.0	26.5											
R 14-6 ●		12.0	27.5											
R 14-6L ○	8.4	16.0	32.5	14.5										
R 14-8S ○		12.0	27.5	11.5										
R 14-8 ●		16.0	32.5	14.5										
R 14-10 ●	10.5	16.0	32.5	14.5										
R 14-12 ●	13.0	22.0	40.0	19.0										
R 14-14 ●	15.0	30.0	48.5	23.5										
R 14-16 ○	17.0													
R 14-20 ○	21.0													

NOTE 1) ● : JIS, UL, CSA ○ : UL, CSA 2) Refer to page 12 for UL/CSA and proper strip length of wire.
3) ※Specification is partly different from other ring terminals.