



Main

Range	Pragma
Product or component type	Enclosure
Enclosure type	Distribution enclosure
Width	336 Mm outside:
Height	300 Mm
Depth	143 Mm
Number of 18 mm modules per row	13
Number of horizontal rows	1
Electrical insulation class	Class II Double insulation
Provided equipment	2 x terminal block 1 x identification label 1 x marking kit 1 x blanking plate strip
Type of front cover	Transparent

Complementary

Enclosure mounting	Surface
9 mm pitches	26
Total number of 18 mm modules	13
Power dissipation in W	22 W
[In] rated current	63 A
Type of rail	DIN
Mounting plate description	Without mounting plate
Cable entry	Trunking Cut-out plates Cable or tube Removable plates
Number of terminal blocks	1 earth (Quick) with 14 outgoing 1 neutral (Quick) with 14 outgoing
Distribution block outgoing	3 x 25 mm ² for earth 11 x 4 mm ² for earth 3 x 25 mm ² for neutral 11 x 4 mm ² for neutral
Enclosure material	Back part: technoplastic Front face: technoplastic
Colour	Enclosure: white (RAL 9016) Front face: grey (RAL 7004) Door: colourless

The information provided in this documentation contains general descriptions and/or technical characteristics of the performance of the products contained herein. This documentation is not intended as a substitute for and is not to be used for determining suitability or reliability of these products for specific user applications. It is the duty of any such user or integrator to perform the appropriate and complete risk analysis, evaluation and testing of the products with respect to the relevant specific application or use thereof. Neither Schneider Electric Industries SAS nor any of its affiliates or subsidiaries shall be responsible or liable for misuse of the information contained herein.

Market segment	Small commercial Residential
Embedding depth	95 Mm
Internal depth	95 Mm

Environment

Fire resistance	Back part: 650 °C Front face: 650 °C Door: 650 °C
IP degree of protection	IP30 without door IP40 with door
IK degree of protection	IK08 without door IK09 with door
Overvoltage category	II
Ambient air temperature for operation	-25...60 °C
Standards	IEC 60670-1 IEC 60670-24 IEC 61439-1 IEC 61439-3

Packing Units

Unit Type of Package 1	PCE
Number of Units in Package 1	1
Package 1 Height	18.5 Cm
Package 1 Width	42.0 Cm
Package 1 Length	38.0 Cm
Package 1 Weight	2.68 Kg

Offer Sustainability

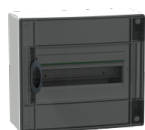
Sustainable offer status	Green Premium product
REACH Regulation	REACH Declaration
REACH free of SVHC	Yes
EU RoHS Directive	Pro-active compliance (Product out of EU RoHS legal scope) EU RoHS Declaration
Toxic heavy metal free	Yes
Mercury free	Yes
China RoHS Regulation	China RoHS Declaration
RoHS exemption information	Yes
Environmental Disclosure	Product Environmental Profile

Contractual warranty

Warranty	18 months
----------	-----------

Product Life Status : **End of commerc. announced**

PRA29113 may be replaced by any of the following products:



LVSXR113

Modular enclosure, PrismaSeT XS, surface, 1 x 13 modules, 1 earth + 1 neutral terminal blocks, transparent smoked door

Qty 1

Substitution date: |