

Technical data sheet

Locknut, PG thread

Item no. 2048132



Locknut DIN 46320, with PG thread DIN 40430.

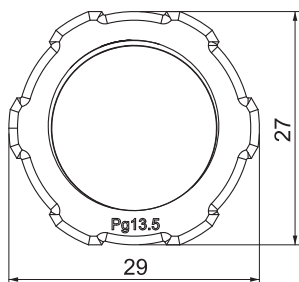
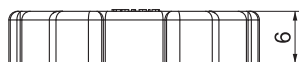


PA Polyamide

Master data

| | |
|--------------------------|------------------|
| Item no. | 2048132 |
| Type | 116 VDE PG13.5PA |
| Description 1 | Locknut |
| Dimension | PG13,5 |
| Colour | Light grey |
| RAL number | 7035 |
| Material | Polyamide |
| Material symbol | PA |
| Smallest sales unit (VG) | 100,00 Piece |
| Weight | 0,26 kg/100 pc. |

Technical data



| | |
|-------------------------------|-------------------------------------|
| Dimension E | 29,00 mm |
| Dimension L | 6,00 mm |
| WAF | 27,00 mm |
| Thread type | PG |
| Thread | Pg 13,5 |
| Nominal thread size metric/PG | 13,50 |
| Fibre-glass reinforced | <input type="checkbox"/> |
| Halogen-free | <input checked="" type="checkbox"/> |
| Impact-resistant | <input type="checkbox"/> |