



3517

CAT. NO. 3517	
FUSE SIZE	L DIM.
5mm × 20mm	.910 (23.1)

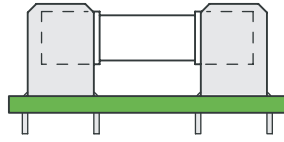
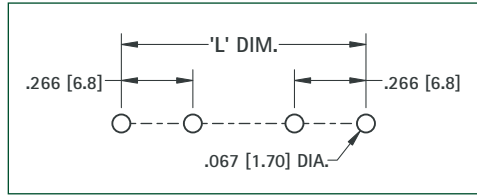


FIGURE 1

Mounting Detail



3517



3518P

CAT. NO. 3518P	
FUSE SIZE	L DIM.
5mm × 20mm	.910 (23.1)

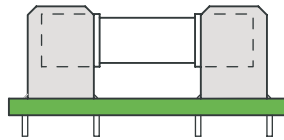
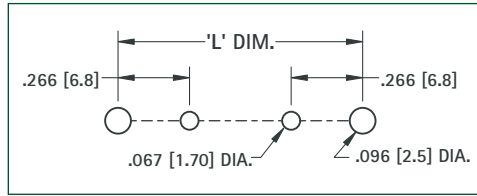


FIGURE 2

Mounting Detail



3518P



3512

CAT. NO. 3512	
FUSE SIZE	L DIM.
5mm × 20mm	.910 (23.1)

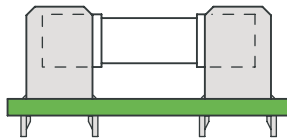
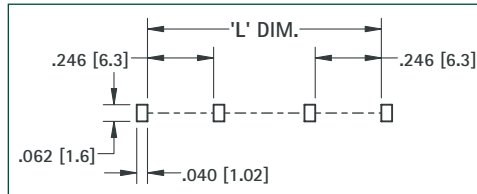


FIGURE 3

Mounting Detail



3512



3512P

CAT. NO. 3512P	
FUSE SIZE	L DIM.
5mm × 20mm	.910 (23.1)

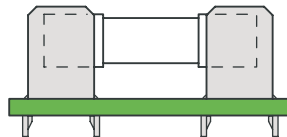
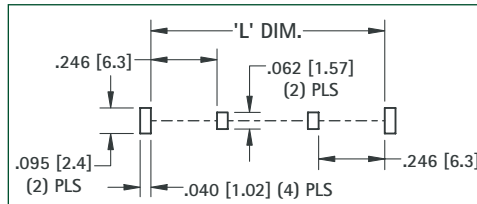


FIGURE 4

Mounting Detail



3512P



3520

CAT. NO. 3520	
FUSE SIZE	L DIM.
5mm × 20mm	.900 (22.9)

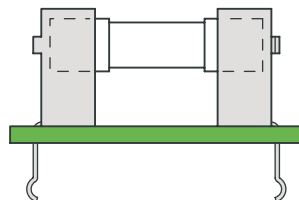
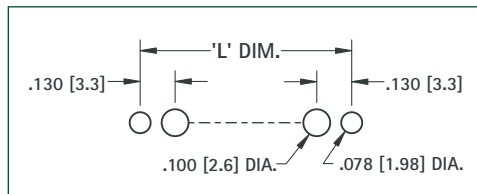


FIGURE 5

Mounting Detail



3520

REFER TO PAGE 30 FOR PART DIMENSIONS

NOTE: ALL MOUNTING DIMENSIONS ARE FOR REFERENCE ONLY. VERIFY YOUR FUSE LAYOUT PRIOR TO FABRICATION.

Marking

FUSE CLIP LAYOUT & MOUNTING DETAILS

THREAD

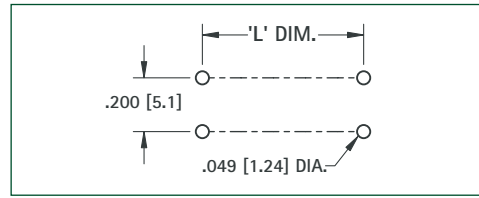
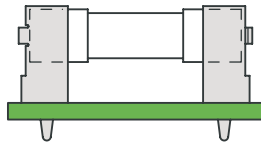
THREAD

O.D.

FIGURE 6



3519



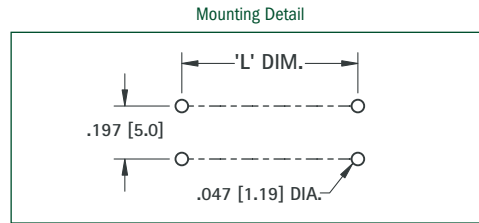
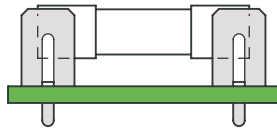
3519

CAT. NO. 3519	
FUSE SIZE	L DIM.
5mm × 20mm	.800 (20.3)

FIGURE 7



3521



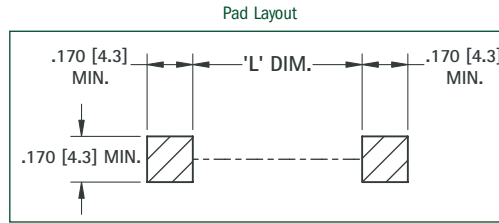
3521

CAT. NO. 3521	
FUSE SIZE	L DIM.
2AG	.514 (13.1)
5mm × 20mm	.710 (18.1)

FIGURE 8



3561



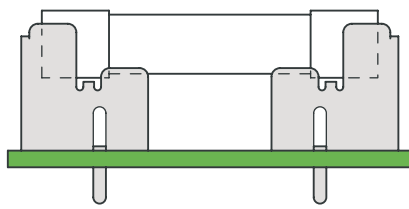
3561

CAT. NO. 3561	
FUSE SIZE	L DIM.
2AG	.354 (9.0)
5mm × 20mm	.550 (14.0)

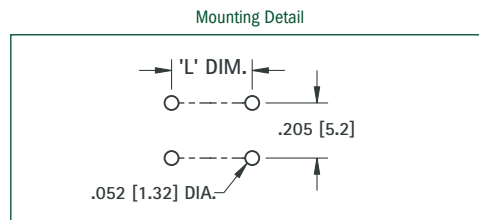
FIGURE 9



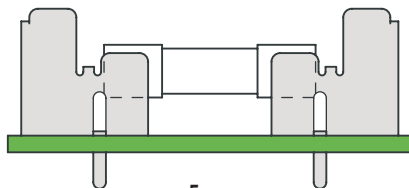
3562



3AG



3562



5mm

CAT. NO. 3562	
FUSE SIZE	L DIM.
5mm × 20mm	.820 (20.9)
3AG	

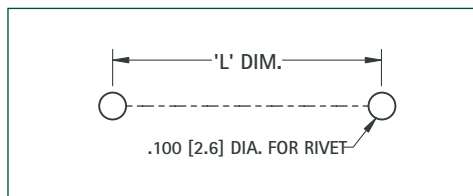
FIGURE 10



3565



Mounting Detail



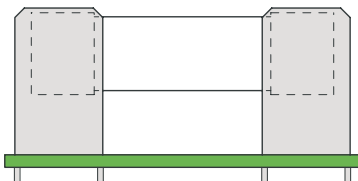
3565

CAT. NO. 3565		
DESIGNATION	FUSE SIZE	L DIM.
4AG	.281 (7.1) × 1.250 (31.8)	1.000 (25.4)

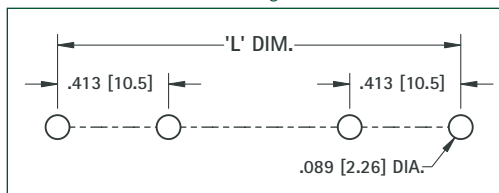
FIGURE 11



3566



Mounting Detail



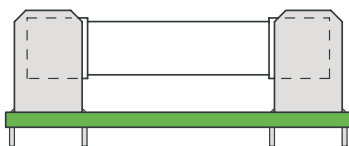
3566

CAT. NO. 3566		
DESIGNATION	FUSE SIZE	L DIM.
SM/SS	.406 (10.3) × 1.375 (34.9)	1.515 (38.5)
5AG	.406 (10.3) × 1.500 (38.1)	1.640 (41.7)

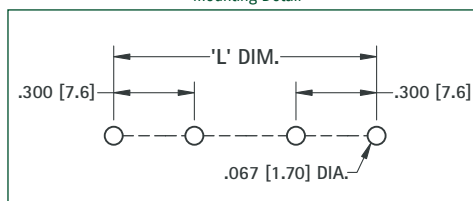
FIGURE 12



3529



Mounting Detail



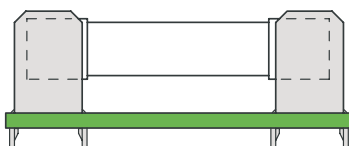
3514

CAT. NO. 3510, 3511, 3513, 3514, 3529		
DESIGNATION	FUSE SIZE	L DIM.
1AG	.250 (6.4) × .625 (15.9)	.750 (19.1)
7AG	.250 (6.4) × .875 (22.2)	1.000 (25.4)
8AG	.250 (6.4) × 1.000 (25.4)	1.125 (28.6)
3AG	.250 (6.4) × 1.250 (31.8)	1.375 (34.9)

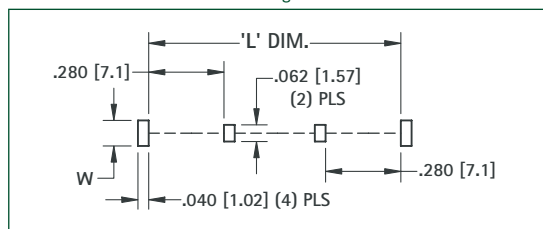
FIGURE 13



3516P



Mounting Detail



3515

CAT. NO. 3515, 3515P, 3516P		
DESIGNATION	FUSE SIZE	L DIM.
1AG	.250 (6.4) × .625 (15.9)	.735 (18.7)
7AG	.250 (6.4) × .875 (22.2)	.985 (25.0)
8AG	.250 (6.4) × 1.000 (25.4)	1.100 (28.0)
3AG	.250 (6.4) × 1.250 (31.8)	1.360 (34.6)

ORIENTATION LEGS	
CAT. NO.	W
3515	.062 (1.57)
3515P	.095 (2.4)
3516P	.122 (3.1)

REFER TO PAGE 31 FOR PART DIMENSIONS

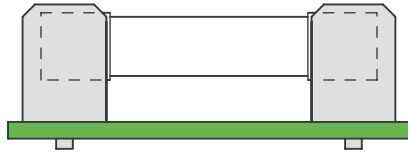
NOTE: ALL MOUNTING DIMENSIONS ARE FOR REFERENCE ONLY. VERIFY YOUR FUSE LAYOUT PRIOR TO FABRICATION.

FIGURE 14

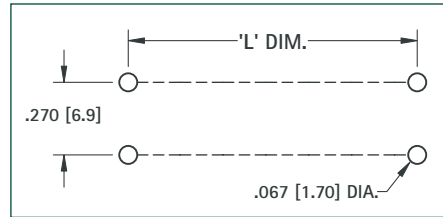
FOR THRU HOLE MOUNT APPLICATIONS



3530



Mounting Detail



3530

FOR CAT. NO. 3530

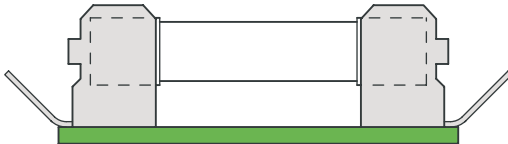
DESIGNATION	FUSE SIZE	L DIM.
1AG	.250 (6.4) × .625 (15.9)	.450 (11.4)
7AG	.250 (6.4) × .875 (22.2)	.700 (17.8)
8AG	.250 (6.4) × 1.000 (25.4)	.825 (21.0)
3AG	.250 (6.4) × 1.250 (31.8)	1.075 (27.3)

FIGURE 15

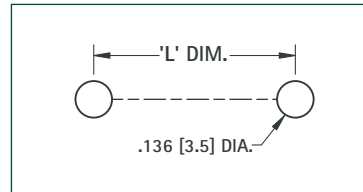
FOR RIVET MOUNT APPLICATIONS



3570



Mounting Detail



3535

FOR CAT. NO. 3531, 3533, 3535, 3570, 4244, 4246, 4247

DESIGNATION	FUSE SIZE	L DIM.
1AG	.250 (6.4) × .625 (15.9)	.450 (11.4)
7AG	.250 (6.4) × .875 (22.2)	.700 (17.8)
8AG	.250 (6.4) × 1.000 (25.4)	.825 (21.0)
3AG	.250 (6.4) × 1.250 (31.8)	1.075 (27.3)

FIGURE 16

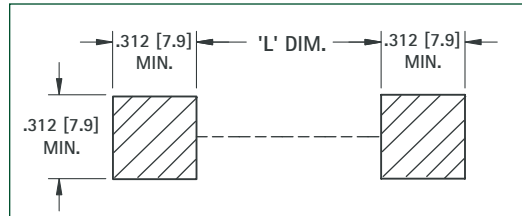
FOR SURFACE MOUNT APPLICATIONS



4244



Pad Layout



3533

FOR CAT. NO. 3531, 3533, 3535, 3570, 4244, 4246, 4247

DESIGNATION	FUSE SIZE	L DIM.
1AG	.250 (6.4) × .625 (15.9)	.120 (3.0)
7AG	.250 (6.4) × .875 (22.2)	.365 (9.3)
8AG	.250 (6.4) × 1.000 (25.4)	.490 (12.4)
3AG	.250 (6.4) × 1.250 (31.8)	.740 (18.8)

FIGURE 17

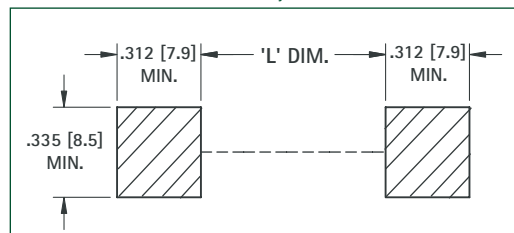
FOR SURFACE MOUNT APPLICATIONS



3532



Pad Layout



3567

FOR CAT. NO. 3532, 3567

DESIGNATION	FUSE SIZE	L DIM.
1AG	.250 (6.4) × .625 (15.9)	.195 (5.0)
7AG	.250 (6.4) × .875 (22.2)	.445 (11.3)
8AG	.250 (6.4) × 1.000 (25.4)	.570 (14.5)
3AG	.250 (6.4) × 1.250 (31.8)	.820 (20.8)