


U.I. Lapp GmbH	<b>PRODUCT INFORMATION</b>	
	<b>SILVYN® KLICK-S</b>	29.11.2013

Fast assembly  
Easy to disassemble  
High tensile strength  
Conduit retained by rib



#### Application range

In combination with protective conduit  
SILVYN® RILL PA6  
SILVYN® RILL PA12  
Fastening of conduits on machine walls for all applications

#### Design

Multi-part conduit holder with M5 borehole for fixation

#### Note

For black (RAL 9005), replace the last digit of the part no. with "5".

#### Product features

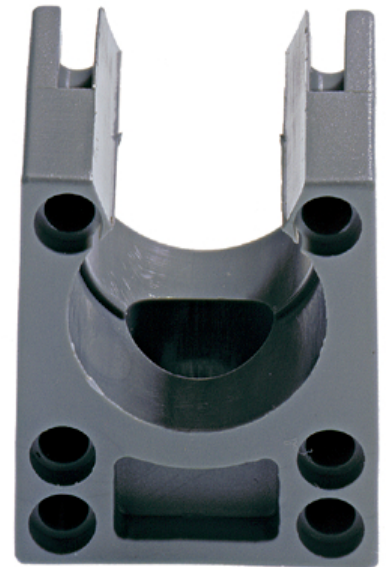
Impact-resistant polyamide

#### Remark

Photographs are not to scale and do not represent detailed images of the respective products.

#### Technical Data

Colour delivered:	Grey (RAL 7001) Black (RAL 9005), UV-resistant
Material:	PA6
Temperature range:	-30°C to +70°C



Product Management	Document: LAPP_PRO1166EN.pdf	1 / 2
--------------------	------------------------------	-------



SILVYN® KLICK-S

29.11.2013

Part number	PG size
SILVYN® KLICK-S grey	
61811110	7
61811120	9
61811130	11
61811190	13.5
61811140	16
61811150	21
61811160	29
61811170	36
61811180	48