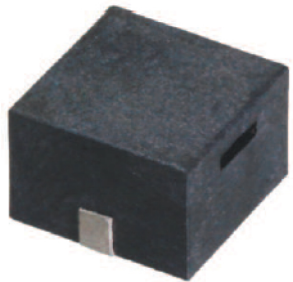


# loudity

## SMT53

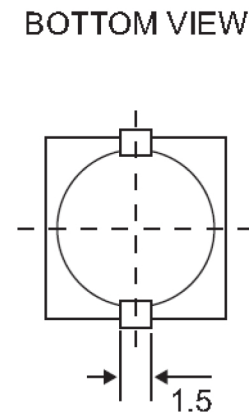
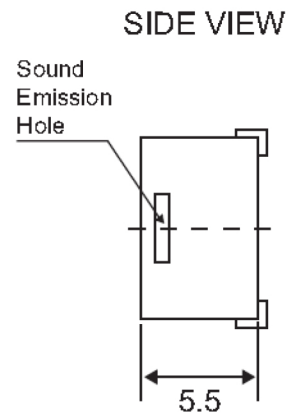
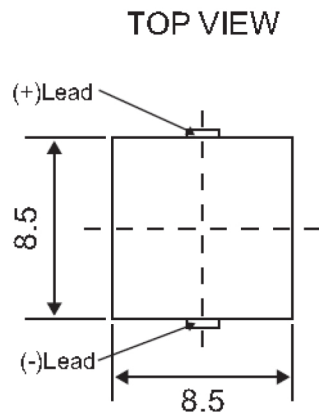


### MATERIALS

Color - Black  
Plastic Material - LCP  
Terminal - SMD Type

### Weight

approx. 1 gm.



All dimensions are in mm  
Unspecified Tolerance are +/-0.5mm

Model	Unit	LD-BZEL-T53-0808
Operating Voltage	Vo-p	3 ~ 8
Rated Voltage	Vo-p	5
* Max. Rated Current	mA.	70
Coil Resistance	ohm	30 +/- 5
* Min. Sound Output at 10cm	dBA	85
Resonant Frequency	Hz	2731
Operating Temperature	°C	-20 ~ +70