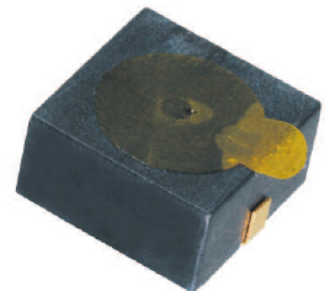


loudity SPB45

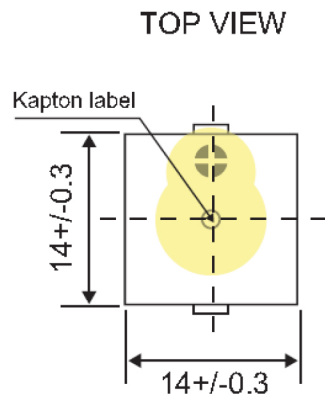


MATERIALS

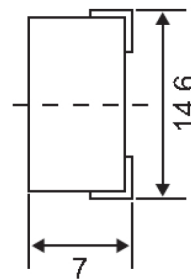
Color - Black
Plastic Material - LCP / PPS
Terminal - SMD Type

Weight

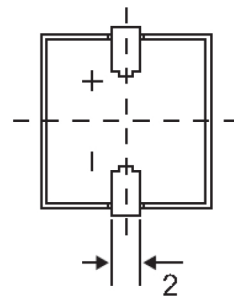
approx. 2 gm.



SIDE VIEW



BOTTOM VIEW



All dimensions are in mm
Unspecified Tolerance are +/-0.5mm

Model	Unit	LD-BZEL-PB45-1414
Operating Voltage	V	3 ~ 16
Rated Voltage	V	5
* Max. Rated Current	mA.	5
* Min. Sound Output at 10cm	dB	80
* Frequency	Hz	4000 +/- 500
Tone Nature		Single
Operating Temperature	°C	-20 ~ +70