



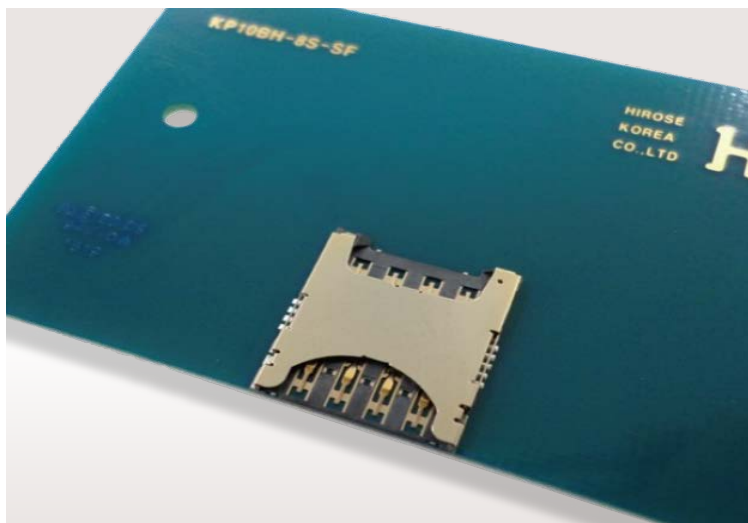
micro SIM



Push / Pull



Low Profile

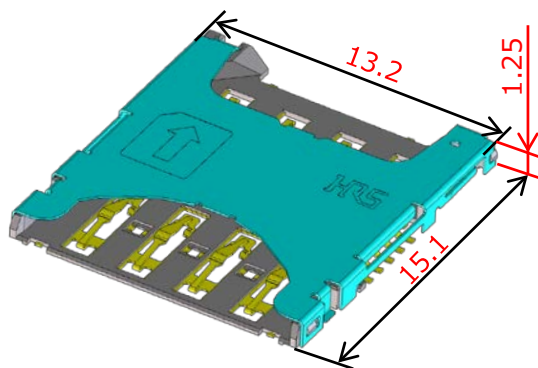


Features

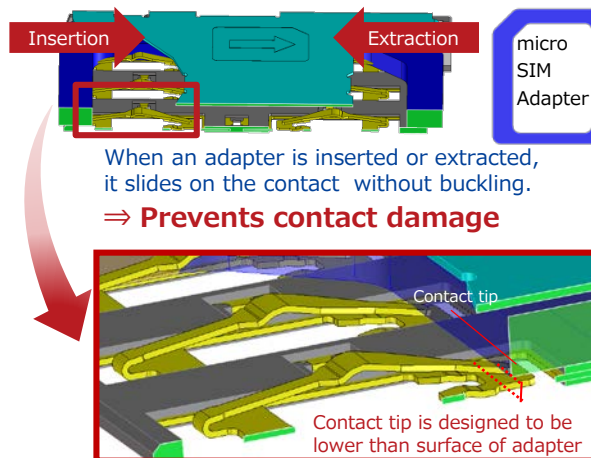
- 1 Low profile 1.25mm height
- 2 Reverse card insertion prevention design
- 3 Buckling prevention eliminates contact damage
- 4 Card detection switch (Normally open)
- 5 Easy inspection with exposed contact design

Dimensions

Unit : mm



Buckling prevention design



Slide Contact Design

Specifications

Contact Resistance	100mΩ Max. (Signal), 200mΩ Max. (Detection)
Withstanding Voltage	500V AC for 1 minute
Mold Resistance	1,000MΩ Min. (500V DC)
Rated Current	0.5A
Rated Voltage	10V AC
Operating Temperature	-30°C to +85°C
Mating cycles	5,000 times

- RoHS compliant, Halogen-free product*
- *This product satisfies halogen free requirements defined as 900ppm maximum chlorine, 900ppm maximum bromine, and 1500ppm maximum total of chlorine and bromine

※ Please contact Hirose's sales representative prior to adopting the products to in-vehicle devices.



micro SIM



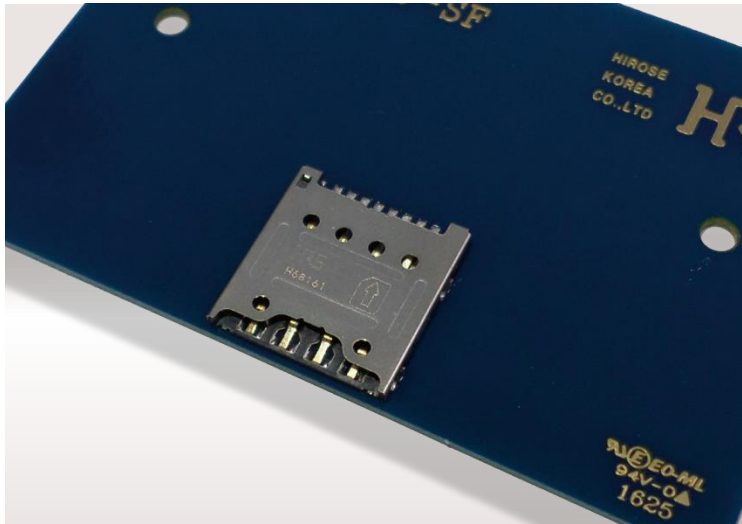
Push / Pull



Ultra Low Profile

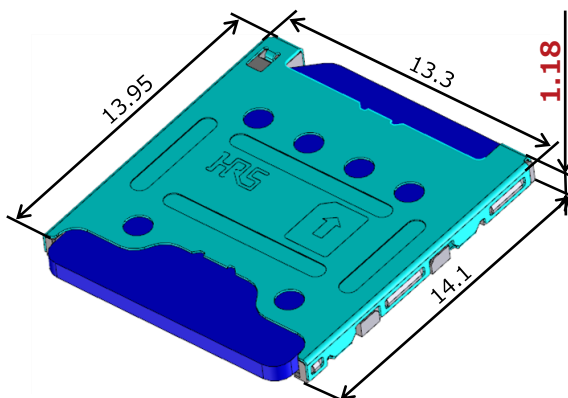
Features

- 1 Space saving with ultra low profile
- 2 Reverse card insertion prevention design
- 3 Buckling prevention design
- 4 Card detection switch (Normally Open)
- 5 Easy inspection with exposed contact design

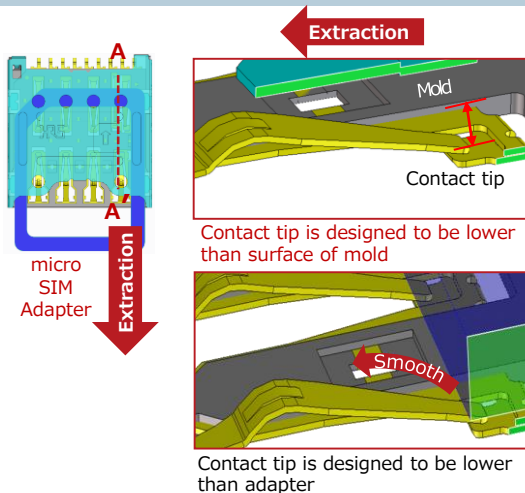


Dimensions

Unit : mm



Buckling prevention design



When an adapter is inserted or extracted, it slides on the contact without buckling.

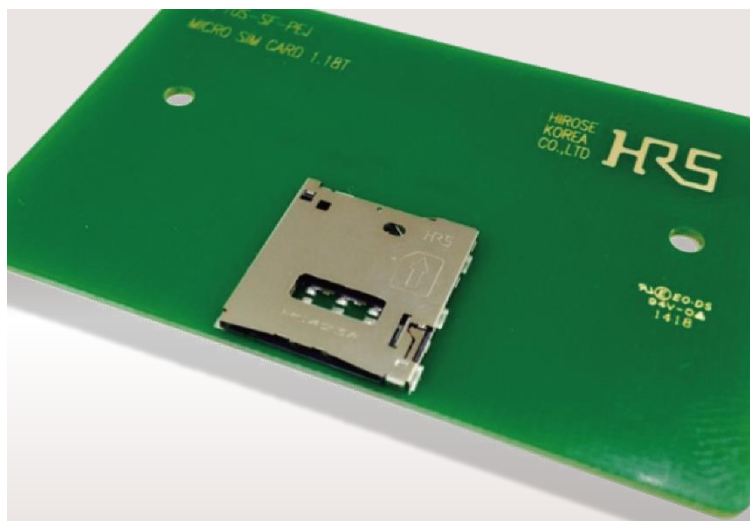
Specifications

Contact Resistance	100mΩ Max.
Withstanding Voltage	500V AC for 1 minute
Mold Resistance	1,000MΩ Min. (500V DC)
Rated Current	0.5A
Rated Voltage	10V AC
Operating Temperature	-30°C to +85°C
Mating cycles	5,000 times

• RoHS compliant, Halogen-free product*

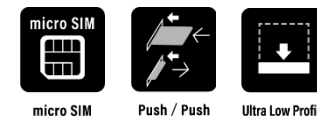
*This product satisfies halogen free requirements defined as 900ppm maximum chlorine, 900ppm maximum bromine, and 1500ppm maximum total of chlorine and bromine

※ Please contact Hirose's sales representative prior to adopting the products to in-vehicle devices.



Features

- 1 Ultra Low profile 1.18mm height
- 2 Reverse card insertion protection
- 3 Buckling prevention eliminates contact damage
- 4 Card detection switch (Normally Close)
- 5 Easy inspection with exposed contact design

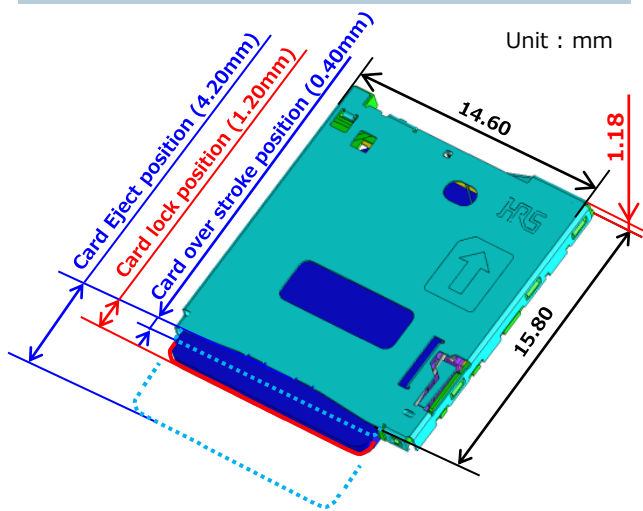


The world's lowest profile in its Class 1.18 mm*

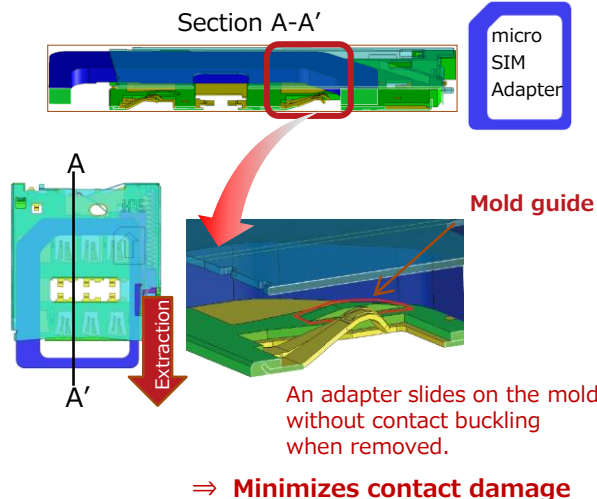
* As push-push type micro SIM card connector as of Feb.2020

Dimensions

Unit : mm



Buckling prevention design



Specifications

Contact Resistance	100mΩ Max.
Withstanding Voltage	500V AC for 1 minute
Mold Resistance	1,000MΩ Min. (500V DC)
Rated Current	0.5A
Rated Voltage	10V AC
Operating Temperature	-30°C to +85°C
Mating cycles	5,000 times

• RoHS compliant, Halogen-free product*

*This product satisfies halogen free requirements defined as 900ppm maximum chlorine, 900ppm maximum bromine, and 1500ppm maximum total of chlorine and bromine

※ Please contact Hirose's sales representative prior to adopting the products to in-vehicle devices.