

Customer Information Sheet

DRAWING No.: G125-0010005, G125-0020005

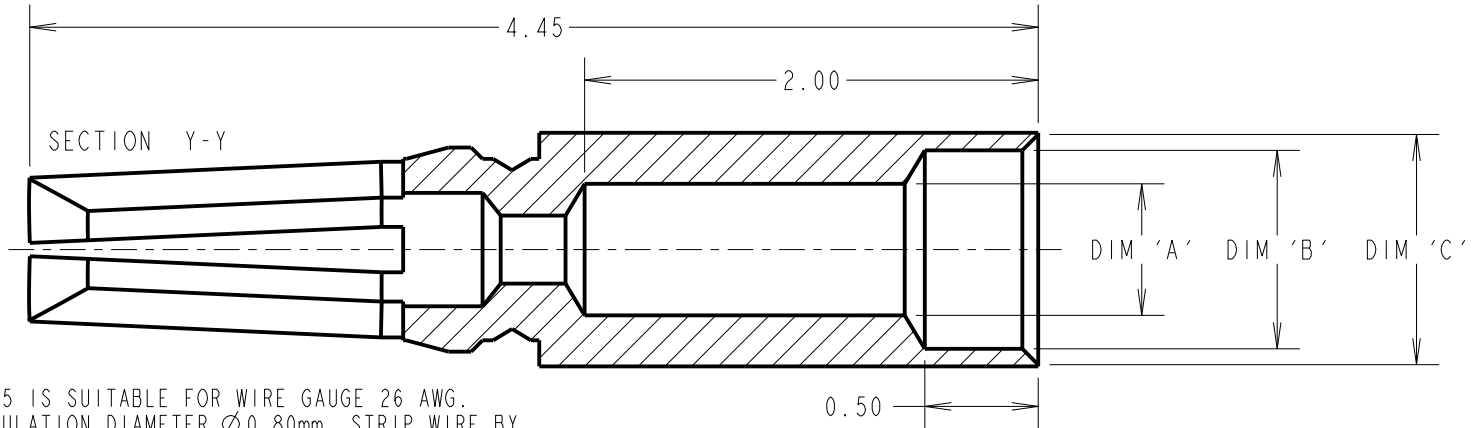
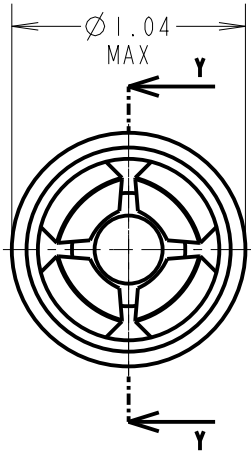
IF IN DOUBT - ASK

©

NOT TO SCALE

THIRD ANGLE PROJECTION

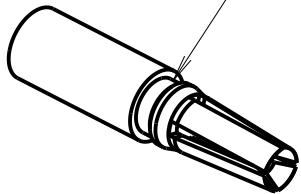
ALL DIMENSIONS IN mm



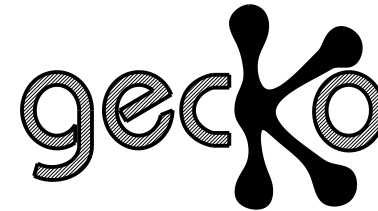
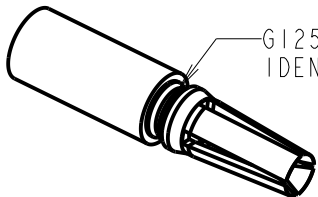
NOTES:

- G125-0010005 IS SUITABLE FOR WIRE GAUGE 26 AWG. MAXIMUM INSULATION DIAMETER $\varnothing 0.80$ mm, STRIP WIRE BY 1.50-1.75mm FOR CRIMPING.
- G125-0020005 IS SUITABLE FOR WIRE GAUGE 28-32 AWG. MAXIMUM INSULATION DIAMETER $\varnothing 0.72$ mm, STRIP WIRE BY 1.50-1.75mm FOR CRIMPING.
- RECOMMENDED CRIMP TOOL = Z125-900 & POSITIONER = Z125-901 CONTACT INSERTION / WITHDRAWAL KIT = Z125-902.
- FOR INSTRUCTIONS ON HAND CRIMP TOOL Z125-900, SEE INSTRUCTION SHEET IS-37.
- RECOMMENDED WIRE TYPES INCLUDE: BS 3G 210 Type A, MIL-W-16878/6 Type ET AND NEMA HP3 Type ET.
- PACKING: 100 PER BOX.
- HANDLING GUIDELINES:
 WHEN HANDLING THIS PRODUCT WEAR NITRILE/LATEX POWDER FREE GLOVES OR FINGER COTS. TO PREVENT THE CONTAMINATION OF CONTACTS FROM HANDS.

G125-0010005
NO IDENT



G125-0020005
IDENT



PATENTED TECHNOLOGY

| PART No. | MATERIAL | FINISH | DIM 'A' | DIM 'B' | DIM 'C' | IDENT GROOVE |
|--------------|------------------|-----------------------------|--|--|--|--------------|
| G125-0010005 | BERYLLIUM COPPER | 0.20-0.30 μ m GOLD OVER | $\varnothing 0.60$ $\varnothing 0.55$ | $\varnothing 0.88$ $\varnothing 0.85$ | $\varnothing 0.95$ $\varnothing 0.92$ | NO |
| G125-0020005 | | 1.5-2.5 μ m NICKEL | $\varnothing 0.48$ $\varnothing 0.44$ | $\varnothing 0.80$ $\varnothing 0.77$ | $\varnothing 0.87$ $\varnothing 0.84$ | YES |

| | | | |
|-----------------|------|----------|-------|
| MGP | 11 | 24.11.22 | 32097 |
| NAME | ISS. | DATE | CN/CO |
| APPROVED: MGP | | | |
| CHECKED: FC | | | |
| DRAWN: S.FLOWER | | | |
| CUSTOMER REF.: | | | |
| ASSEMBLY DRG: | | | |

HARWIN

www.harwin.com
technical@harwin.com

THIS DRAWING AND ANY INFORMATION OR DESCRIPTIVE MATTER SET OUT HEREON ARE CONFIDENTIAL AND COPYRIGHT PROPERTY OF THE HARWIN GROUP AND MUST NOT BE DISCLOSED, LOANED, COPIED OR USED FOR MANUFACTURING, TENDERING OR FOR ANY OTHER PURPOSE WITHOUT THEIR WRITTEN PERMISSION.

TOLERANCES

X. = ± 1 mm
 X.X = ± 0.50 mm
 X.XX = ± 0.20 mm
 X.XXX = ± 0.01 mm
 ANGLES = $\pm 5^\circ$
 UNLESS STATED

MATERIAL:

SEE TABLE

FINISH: SEE TABLE

S/AREA:

mm²

TITLE:

G125 SERIES FEMALE CRIMP SIGNAL CONTACTS

DRAWING NUMBER:

G125-0010005, G125-0020005

SHT
3 OF 3