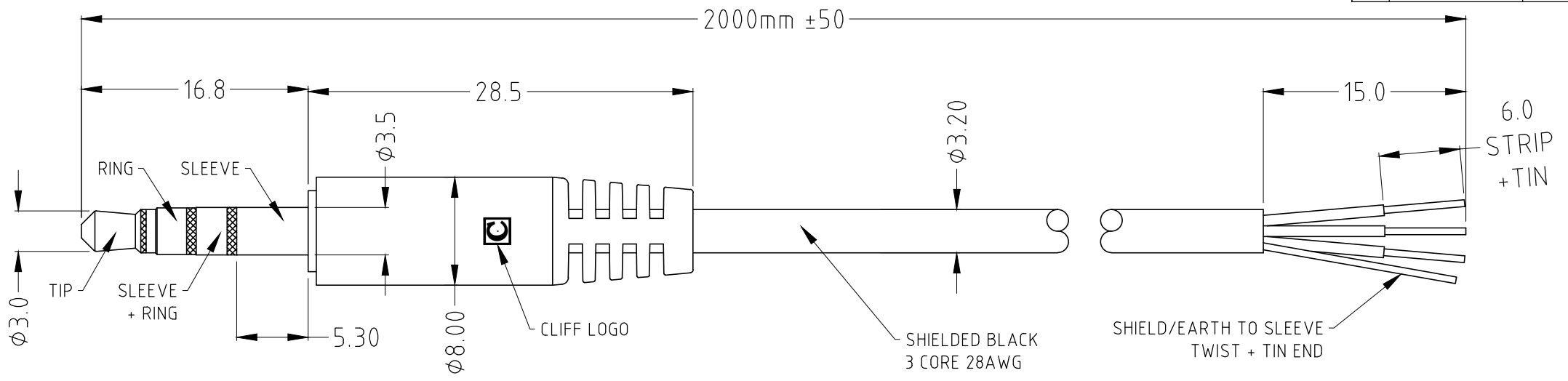
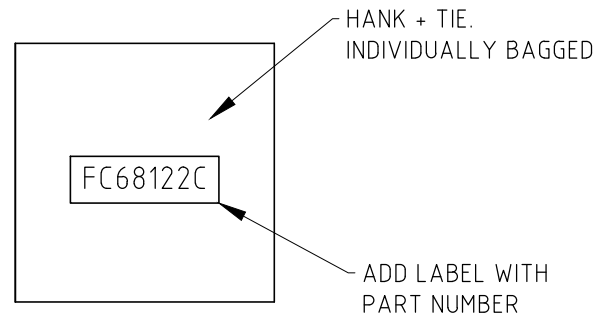
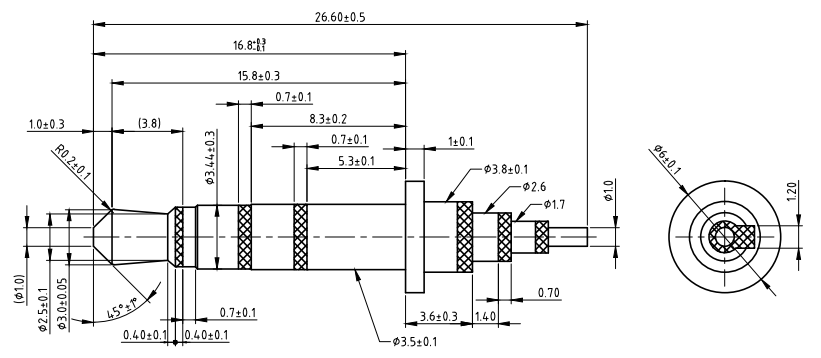


| ISS. | AMEND | DATE |
|------|--------|----------|
| 1 | ISSUED | 02/10/14 |

TIP - RED
 RING - WHITE
 SLEEVE+RING - BLACK
 SLEEVE - SHIELD/EARTH



OVERMOULD FC68122 PLUG OR APPROVED EQUIVALENT.



| |
|--------------------------|
| RoHS COMPLIANT |
| TOLERANCE |
| NO DEC. PLACE ± 0.50 |
| 1 DEC. PLACE ± 0.30 |
| 2 DEC. PLACE ± 0.15 |
| HOLE Ø ± 0.10 |
| ANGLES ± 3° |
| UNLESS OTHERWISE STATED |

Cliff Electronic Components Ltd.
 76 Holmethorpe Avenue, Holmethorpe Industrial Estate,
 Redhill, Surrey, RH1 2PF, England, UK
 Tel: 01737-771375 Fax: 01737-766012 Website: www.cliffuk.co.uk

DIMENSIONS IN MILLIMETERS UNLESS OTHERWISE STATED. WORK TO DIMENSIONS. REMOVE ALL BURRS. IF IN DOUBT ASK.

3rd ANGLE PROJECTION:

DO NOT SCALE

MATERIAL: COMPOSITE

TITLE: Ø3.5mm 4 POLE OVERMOULD LEAD 2m

FINISH: CLEAN - SEE TABLE

DRWG. No. **FC68122C**

THE CONTENTS OF THIS DOCUMENT MUST NOT BE COPIED OR DISCLOSED TO A 3rd PARTY WITHOUT WRITTEN PERMISSION OF CLIFF UK. © 2014

DRAWN: T.J.O.

APPROVED: D.P.J.

FORM: A4DRWGH