



dimmerbox



lighting



electrical



on/off



microWiFi



smartphone

PRODUCT OFFER

dimmerBox is the World's first controller that allows you to turn control the brightness of **traditional 230V lighting - both incandescent and LED** directly with smartphones and tablets - also **from any place in the world**

It allows you to control all kind of light sources suitable for dimming (leading edge and trailing edge) – using the application just choose the type of lamp you want to control and dimmerBox will set its parameters to ensure an optimal and safe operation

integrated soft-start function has positive impact on user comfort. After changing brightness of the light, it illuminates gradually. **Thereby, it increases life span of a bulb.**

dimmerBox allows you to adjust the brightness of the lighting depending on your needs, it also has a **timer function** (e.g. the light can slowly fade down when we are falling asleep or fade up in the dark, winter wake up)

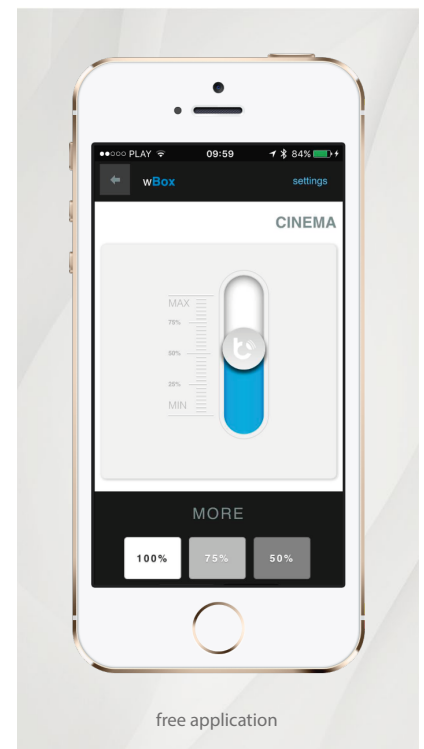


it have a smart fuse - when it detects a dangerous event immediately disconnect the damaged device and after solving the problem (e.g. bulb replacement) simply touch the button on the screen of your smartphone to "replace the fuse"

you just need one device to fully control single light and adding more devices allows you to control the lighting of the entire house

It does not require additional modules, hubs, or central units

reducing the brightness, we not only protect the environment but also save money - using 4 popular 50W halogen spotlights, power reduction by half when used for two and a half hours a day brings more than 10 Euro savings per year



using dimmerBox you can easily simulate your presence in the house or apartment (a longer trip/holiday) to help protect it from burglars

TURN ON / OFF AND DIMM 230V LIGHTING FROM ANY PLACE



dimmerbox



lighting



electrical



on/off



microWiFi



smartphone

BRIGHTNESS CONTROLLER FOR 230V LIGHTING WITH WIFI TECHNOLOGY

TECHNICAL SPECIFICATIONS

electrical parameters	
supply voltage	▶ 12 - 24V DC
energy consumption	▶ <1W
control modes	▶ leading edge, trailing edge
control output	
type of output control	▶ output phase
maximum voltage	▶ 230 V AC
maximum load	▶ 250 W
pushbutton inputs	
number of inputs	▶ 2
input type	▶ logical, active when connected to N, configurable
supported switches	▶ all kinds
physical characteristics of the device	
dimensions	▶ 48x38x23 mm
housing	▶ made of polyurethane composition not containing halogens, Self-extinguishing for Thermal class B (130 °C)
protection level	▶ IP20
mounting method	▶ in the box, the wall, inside the housing of the dimming device
characteristics of the communication	
communication standard	▶ μWiFi, compatible with WiFi
transmission type	▶ bi-directional, encrypted
frequency	▶ 2.4 GHz
API	▶ open
mode	▶ direct connection (as Access Point), Wi-Fi connection via a standard router, connection with access from any location in the world (requires only access to the Internet)
compatible devices	▶ Apple iPhone, Apple iPad, iPad Mini, Android, Windows Phone, computers and mobile devices operating a fully HTML5, soon Apple Watch



lighting

Products associated with lightning



electrical

Controller devices, powered by 230V



on/off

Device which allows to turn on/off receivers/ equipment



microWiFi

Devices that use microWiFi wireless communication



smartphone

Devices controlled using smartphones and tablets



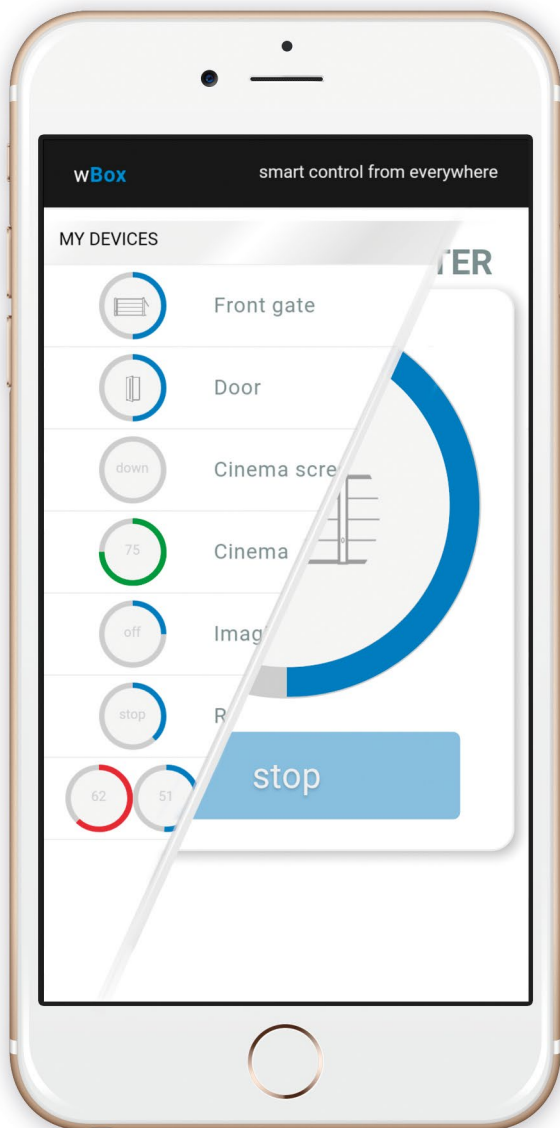
- ▶ simplicity and scalability

Smart homes were from the beginning associated with expensive and complicated installations. Over the past five years, cheaper and less complicated solutions have appeared on the market. However, they have some disadvantages. To work they require a central unit, which is an intermediary device which makes possible the communication between the user (and more specifically the Smartphone or Tablet) and the controller. That device is far more expensive than the individual elements of the system and susceptible to failure. Such damage would cause the paralysis of the entire smart building.

wBox is *an unique global solution*. To operate, WBox devices **do not need additional equipment** such as Central Unit or hub. Just a simple WiFi network is enough. After connecting the device with your home network, it can be controlled from any place in the World. Without complicated configuration. You can start from one "cube" lamp or roller shutter controller and then extend **your own smart home** adding another one – according to your needs.

It is a solution created by *a team of inventors and engineers, authors awarded with "The Polish Invention of the year 2014"* and the *Innovators WPROST 2016 award*. They were also nominated to the *"Top Innovators under 35" award*, who up to the present have created over 30 innovative products and services.

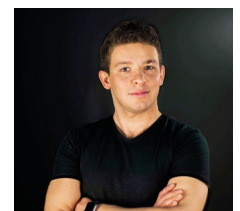
Designed and produced entirely in Europe.



PATRYK ARŁAMOWSKI

founder of blebox.eu

CEO & founder of blebox.eu



blebox.eu

Blebox.eu is a brand of high-quality products related to home automation. Created in 2013 by authors of the "Polish Invention of the year 2014" and 30 other technological and product innovations. Within 3 years it has evolved from a local start-up to an international company which provides innovative products to more than 20 countries of the world, including China.

Our products are completely designed (we have our own research laboratories) and produced in the European Union, in particular in Poland and Germany. We take the issues of quality and reliability very seriously. That's why we give on our products a 5 year warranty, creating a brand based on trust.

In 2016 Blebox.eu was awarded with the crystal statuette Innovators 2016 granted by the editors of Wprost, the Ministry of Science and Higher Education and the Ministry of Development, for the most innovative company in Poland.

We invite installers, shops and wholesalers to cooperate with us. For a constant cooperation we offer attractive discounts and the possibility to customize own requirements and creating new solutions.



MORE INFORMATION:



Anahi Lopez

anahi.lopez@blebox.eu
tel. +48 731 868 105

www.blebox.eu