

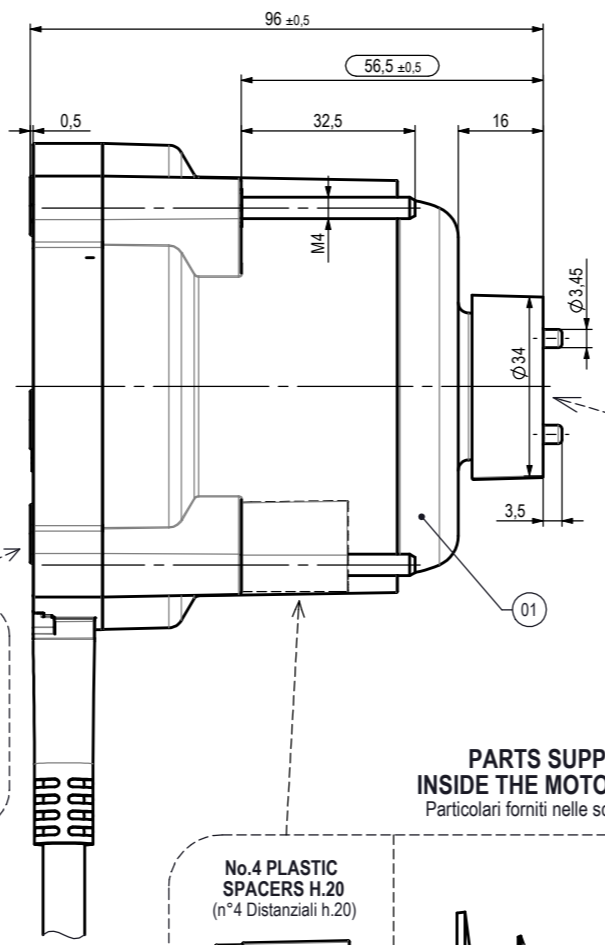
**PARTS SUPPLIED
INSIDE THE MOTOR BOXES**
Particolari forniti nelle scatole motori

No.3 Motor fixing screw
Vite fissaggio motore M4x7,5
for Rear Mounting
(per fissaggio posteriore)

**PARTS SUPPLIED
INSIDE THE MOTOR BOXES**
Particolari forniti nelle scatole motori

No.4 FLANGE NUTS M4
Code 1-008-026
for mounting of the ring
or plastic support
(per montaggio anello o
piedino in plastica)

No.2 SCREWS M4 x 16
Code 1-002-192
for plastic support
(per piedino in plastica)



**No.4 PLASTIC
SPACERS H.20**
(n°4 Distanziali h.20)

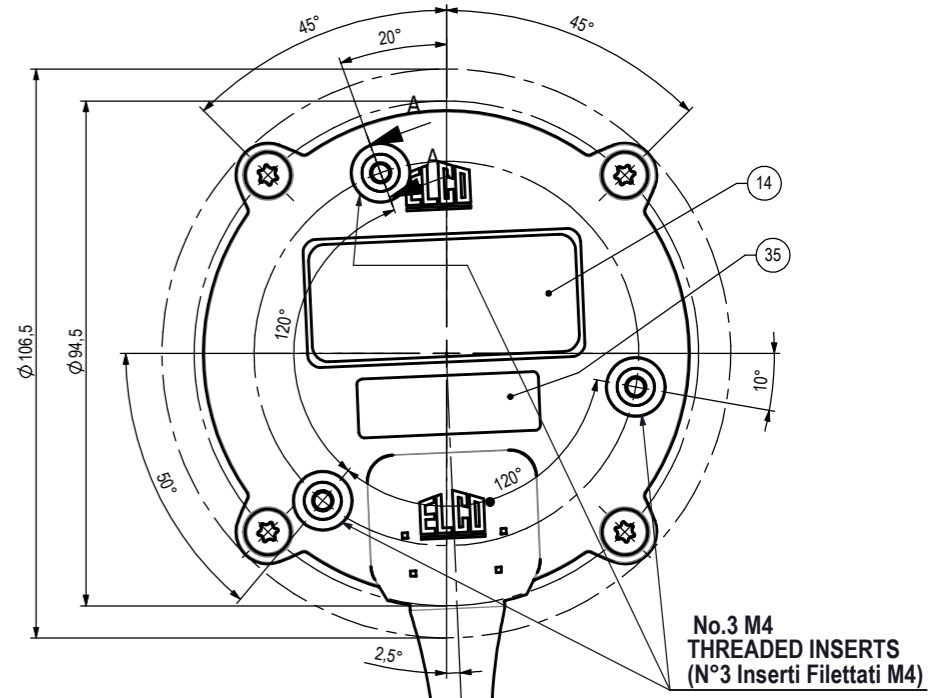
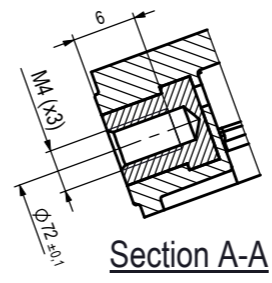
20

**PARTS SUPPLIED
INSIDE THE MOTOR BOXES**
Particolari forniti nelle scatole motori

**RUBBER WASHERS FOR THE FIXING
OF THE ALUMINIUM FAN BLADE**
RONDELLE IN GOMMA
PER VENTOLE ALLUMINIO

Ø36

Ø21



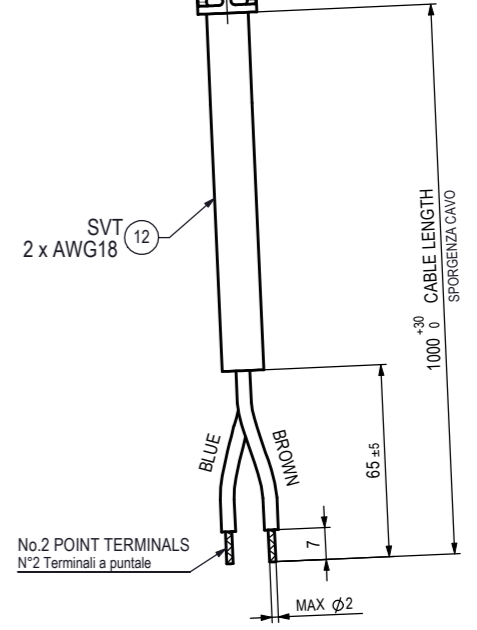
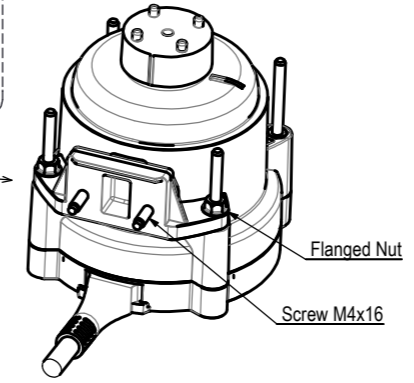
**PART SUPPLIED
INSIDE THE MOTOR BOXES**
(Particolare fornito nelle scatole motori)

**Insert No.1 plastic support in each cell
of packaging motor**
(Inserire n°1 piedino in ogni cella
di imballo motore)

No.1 PLASTIC SUPPORT
Code 1-072-1251

32

**MOUNTING OF PLASTIC SUPPORT
(without spacers)**
Montaggio del piedino (senza distanziali)



MOD. ECM C 20-25-2
CODE EFE20250VC0446

230V ~ 50/60Hz Cl.B
17/25W 0,18A IP65
1400 Rpm
Electronically protected

DATE

VDE
REG. NR. E225

CE

BLUE N
BROWN L

M

35



Rel	Date	Description	Checked
MODIFICATIONS			

For dimension without tolerance see standard UNI EN 22768-mK		Treatment	A2
Material			
Drawn M.Cazzaniga	MOTOR ECM 20 230V C V		Weight gr.
Date 19/09/14	230V 50/60Hz - 1400Rpm		Ref. No. R.S.14/0183 (DP.2606)
Check	VDE Rules		Release -
Scale	EFE20250VC0446		

PEREMPTORY
Running test after the complete assembly, cable included
Eseguire il collaudo ad assemblaggio completo, cavo incluso

CLASS "B" MOTOR - BALL BEARINGS MANUFACTURED (Motore in classe "B" - Esecuzione a Cuscinetti)	
ELECTRONIC BOARD (Scheda elettronica)	1/2H - 1400Rpm
PLASTIC BODY (Corpo in plastica)	-
PLASTIC BACK COVER with M4 THREADED INSERTS (Fondello in plastica con inserti filettati M4)	-
PLASTIC FAN BLADE HUB (Portaventola in plastica)	-
ASSEMBLING SPECIFICATION (Normativa di Assemblaggio)	EL.UN.0098
OPERATING INSTRUCTIONS	OI-ECM/01
ELECTRICAL SPECIFICATION (Prescrizione controllo elettrico)	M.2094/3