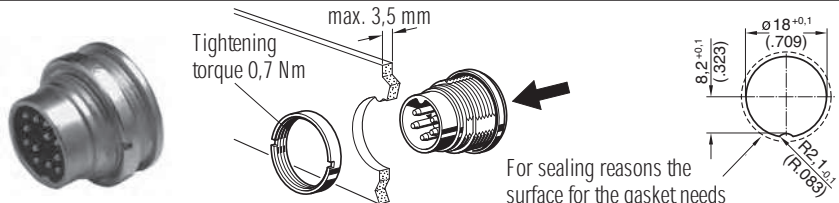


C 091 D

Male receptacle for rear mounting



For sealing reasons the surface for the gasket needs to be level and free of burrs.

Panel Cutout

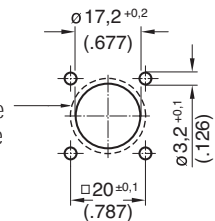
Description	Drawing	No. of cont.	Part Number solder termination		Part Number Crimp termination ¹⁾
			Contact plating silver	Contact plating gold ²⁾	
Male receptacle, termination: solder or crimp, contact plating: silver or gold, panel mounting with ring nut, sealing with O-Ring.		3 ³⁾	C091 31C003 100 2	C091 31C003 200 2	C091 11C003 000 2
		4 ³⁾	C091 31C004 100 2	C091 31C004 200 2	C091 11C004 000 2
		5	C091 31C005 100 2	C091 31C005 200 2	C091 11C005 000 2
		5S ³⁾	C091 31C105 100 2	C091 31C105 200 2	C091 11C105 000 2
		6 ³⁾	C091 31C006 100 2	C091 31C006 200 2	C091 11C006 000 2
		7	C091 31C007 100 2	C091 31C007 200 2	C091 11C007 000 2
		7 ³⁾	C091 31C107 100 2	C091 31C107 200 2	C091 11C107 000 2
		8 ³⁾	C091 31C008 100 2	C091 31C008 200 2	C091 11C008 000 2
		12	C091 31C012 100 2	C091 31C012 200 2	-
		14	C091 31C014 100 2	C091 31C014 200 2	-

C 091 D

Male receptacle for flange mounting



For sealing reasons the surface for the gasket needs to be level and free of burrs. Provide suitable sealing for the screws.



Panel Cutout

Description	Drawing	No. of cont.	Part Number solder termination		Part Number Crimp termination ¹⁾
			Contact plating silver	Contact plating gold ²⁾	
Male receptacle, sealing with O-Ring, termination: solder or crimp, contact plating: silver or gold, with sealing gasket.		3 ³⁾	C091 31S003 100 2	-	C091 11S003 000 2
		4 ³⁾	C091 31S004 100 2	-	-
		5	C091 31S005 100 2	-	C091 11S005 000 2
		5S ³⁾	C091 31S105 100 2	-	-
		6 ³⁾	C091 31S006 100 2	C091 31S006 200 2	-
		7	C091 31S007 100 2	-	C091 11S007 000 2
		7 ³⁾	C091 31S107 100 2	-	C091 11S107 000 2
		8 ³⁾	C091 31S008 100 2	C091 31S008 200 2	-
		12	C091 31S012 100 2	C091 31S012 200 2	-
		14	C091 31S014 100 2	C091 31S014 200 2	-

¹⁾ Please order crimp contacts separately, see page 43

²⁾ see remark page 34

³⁾ Contact order for DIN EN 60 130-9