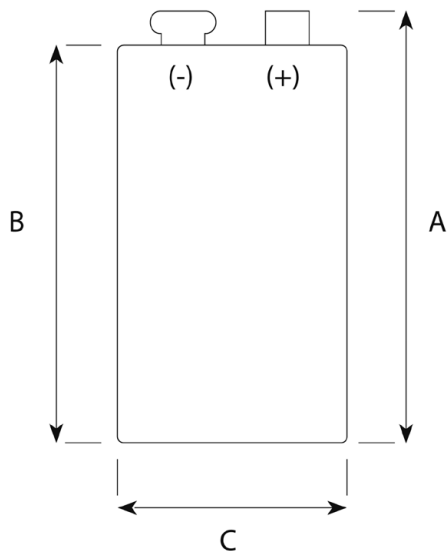
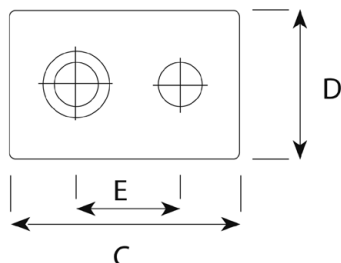


6LR61AD POWERLINE

IEC DIMENSIONS (MM)



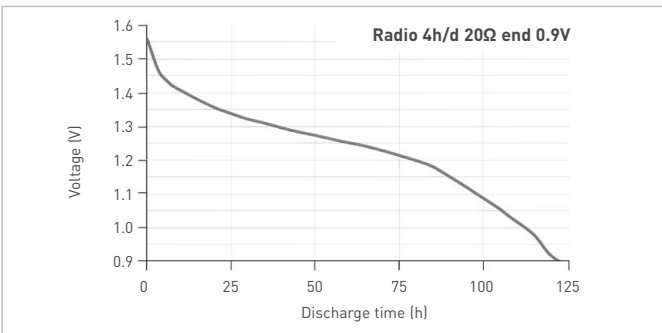
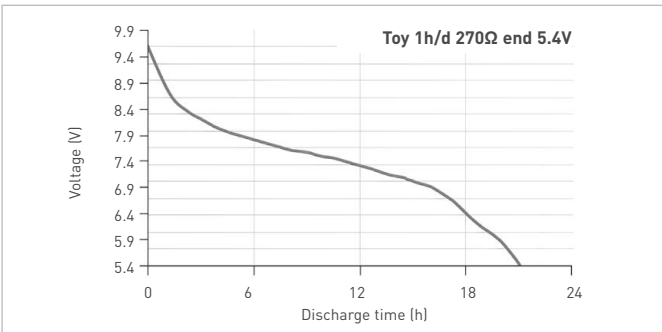
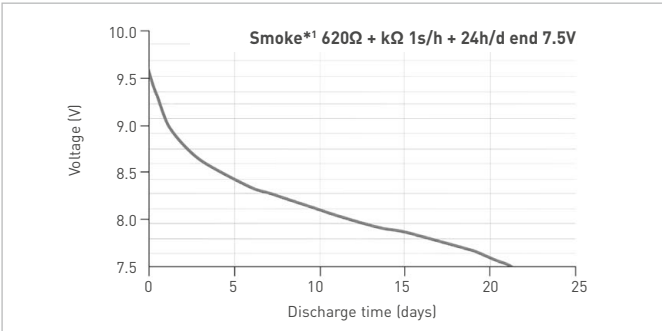
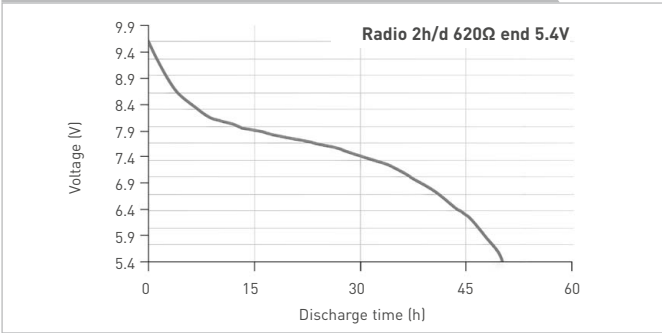
Dimensions	max. (mm)	min. (mm)
A	48.5	46.5
B	46.4	
C	26.5	24.5
D	17.5	15.5
E	12.95	12.45

SPECIFICATIONS

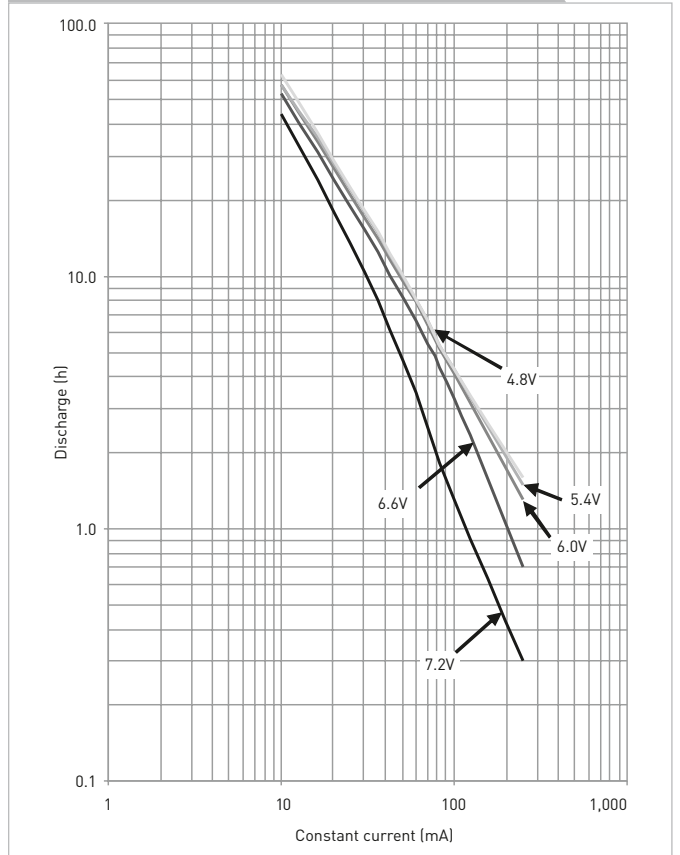
Name	9V / 6LR61 / 6AM6 / MN1604 / 1604A / 1604AC
Made in	Belgium
Type	Alkaline foil
Nominal voltage	9V
Electrolyte	Potassium Hydroxide
Average weight	44.3g
Storage temperature range	+10°C ~ +25°C
Operating temperature range	-20°C ~ +45°C
Average impedance	approx. 2.3Ω @ 1kHz AC
Heavy metals	No added mercury (Hg), Cadmium (Cd) or Lead (Pb)
Compliant with	IEC 60086 non dangerous goods regulation Nordic Ecolabel (White Swan) version 3.7 EC directive 91/157EC, 98/101EC, 2006/66/EC
Recommended cut-off voltage	4.8V per battery

6LR61AD POWERLINE

TYPICAL DISCHARGE VALUES



DISCHARGE TEMPERATURE CHARACTERISTICS



\*1 Smoke detector.