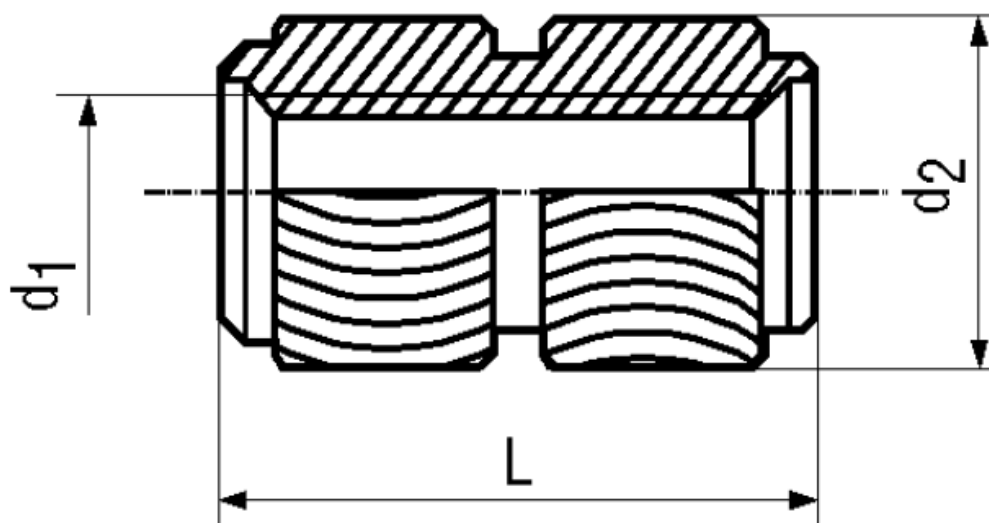


BN 1934

Threaded inserts
for thermal installation



Material	Brass	Surface	plain
----------	-------	---------	-------

Article No. - 1429841

d_1	M3
d_2	4,4
L	5,8
d_4 ABS	
d_4 PVC	
a ABS	
a ABS	

Hole must be at least 0.8 mm longer than the threaded insert.