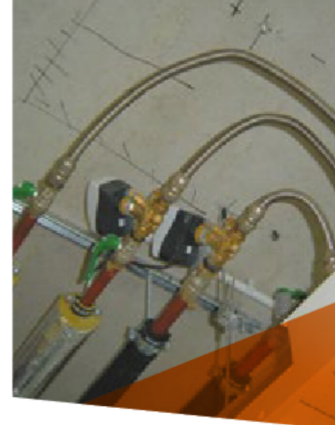


Anaflex® corrugated hose:

QUICK AND PERFECT SOLUTION FOR EVERY HVAC INSTALLATION



ANAFLEX® from Anamet Europe B.V. is the perfect flexible solution for HVAC installations. The ideal solution for a great number of applications. The ANAFLEX® system has been designed as a self-mounting flexible hose system for heating, steam-tracing, cooling-ceilings, watersupply, boiler-connection, machine-fluid-connection and solar-panel-connection applications. The flexible ANAFLEX® corrugated hose is made of high quality stainless steel (AISI-316L), does not age and is diffusion-tight. ANAFLEX® solves the problem of rubber and plastic hoses, which due to oxygen-diffusion and ageing can damage the installation. The flexible stainless steel hose is easy to handle and easy to cut to the desired length, which saves installation time.



Standard corrugation

Material & Construction:

Construction: Flexible parallel corrugated hose, made of thin wall stainless steel AISI-316L

Temperature range: 0 °C tot +110 °C (for higher temperatures till +250 °C please consult Anamet Europe B.V.).

Colour: Metal.

Product advantages:

- No oxygen diffusion, prevents damage and does not block the installation.

- Does not kink.
- Durable and does not age.
- Is corrosion resistant.

Mounting advantages:

- You decide the length on the spot.
- Quick and efficient mounting.
- Smooth installation.
- Very long life time.

ANAFLEX® Size DN	DIAMETRE		WORKING-PRESSURE (Bar)	BENDING-RADIUS Static (mm) *	STANDARD CARTON		SMALL CARTON		REEL		WEIGHT (Kg/m)
	Inside (mm)	Outside (mm)			Metre	Article No.	Metre	Article No.	Metre	Article No.	
DN 12	12,2	16,7	12	45	30	465.012.1	10	465.012.3	120	465.012.5	0,12
DN 16	16,2	21,5	10	60	30	465.016.1	10	465.016.3	90	465.016.5	0,20
DN 20	20,3	26,7	8	70	30	465.020.1	10	465.020.3	60	465.020.5	0,28
DN 25	25,4	32,3	6	100	30	465.025.1	10	465.025.3	-	-	0,39

* For dynamic applications, please consult your Anamet representative.

The ANAFLEX® stainless steel hoses can be used in combination with the unique ANAFLEX®-CLICK fittings, as mentioned on the next page.

This combination gives you many advantages:

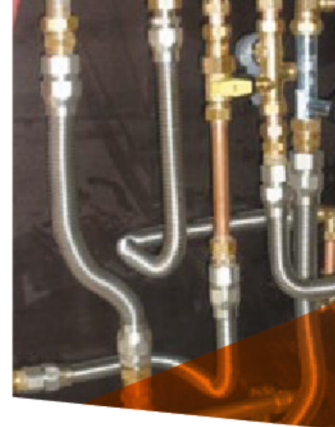
- You can install the fittings yourself.
- Quick and efficient working method.
- Significant installation time reduction.
- Smooth and perfect result.



Anaflex®	12	16	20	25
Male BSPT	3/8"-1/2"	1/2"-3/4"	3/4"-1"	1"
Female BSPP	3/8"-1/2"	1/2"-3/4"	3/4"-1"	1"
Pipe compression	-	15-18 mm	18-22 mm	-

Anaflex® -click fittings:

NICKEL PLATED BRASS FITTINGS WITH UNIQUE CLICK-SYSTEM



For the stainless steel ANAFLEX® corrugated hose an unique mounting fitting has been developed. The major advantage of the ANAFLEX® -CLICK fitting is the quick-mounting directly on the hose. After turning the backnut (2 till 3 full turns) a tensile strong and liquid-tight connection is made. The nickel plated brass fittings are suitable for cold and hot water as well as steam.

Material & Construction:

Construction: Nickel plated brass fitting, consisting of 6 parts (body, counter nut, retaining ring and filler ring are nickel plated brass, internal sealing sleeve is from PTFE and the internal flat seal is from silicone rubber).

Special approvals: Click system tested and approved by the "Institut für Solartechnik SPF" (Switzerland).

Temperature range: 0 °C till +110 °C (for higher temperatures please consult Anamet Europe B.V.).

Colour: metal.

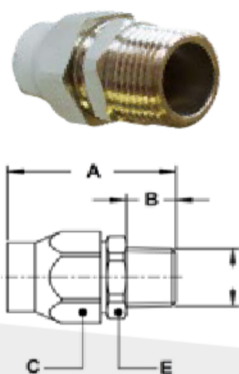


Figure C3, nickel plated brass click fitting, male, BSPT

THREAD	ANAFLEX	ID HOSE	DIMENSIONS IN MM					STANDARD PACKAGE	ARTICLE NUMBER	WEIGHT
size	Size (DN)	(MM)	A	B	C	D	E			(Kg/100)
3/8" BSPT	DN 12	12,2	49	14	24	-	22	10	400.010.3	6,1
1/2" BSPT	DN 12	12,2	50	15	24	-	22	10	400.012.3	6,3
1/2" BSPT	DN 16	16,2	58	17	29	-	27	10	400.016.3	9,7
3/4" BSPT	DN 16	16,2	59	17	29	-	27	10	400.018.3	10,5
3/4" BSPT	DN 20	20,3	62	17	36	-	34	10	400.020.3	16,0
1" BSPT	DN 20	20,3	66	18	36	-	34	10	400.022.3	18,3
1" BSPT	DN 25	24,0	63	18	42	-	40	5	400.025.3	22,8

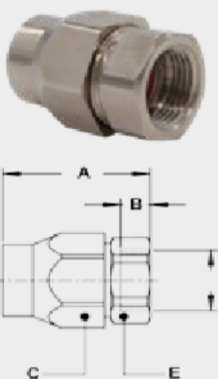


Figure C5, nickel plated brass click fitting, female, BSPP, flat seat

THREAD	ANAFLEX	ID HOSE	DIMENSIONS IN MM					STANDARD PACKAGE	ARTICLE NUMBER	WEIGHT
size	Size (DN)	(MM)	A	B	C	D	E			(Kg/100)
1/2" BSPP	-	DN 16	48	9	29	-	27	10	400.010.5	9,5
3/4" BSPP	-	DN 20	51	10	36	-	34	10	400.020.5	715,0

ANAFLEX® -CLICK FITTINGS

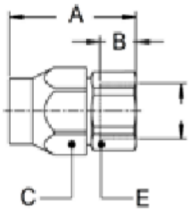


Figure C6, nickel plated brass click fitting, female, BSPP

THREAD	ANAFLEX	ID HOSE	DIMENSIONS IN MM					STANDARD	ARTICLE	WEIGHT
size	Size (DN)	(MM)	A	B	C	D	E	PACKAGE	NUMBER	(Kg/100)
3/8" BSPP	DN 12	12,2	45	13	24	-	22	10	400.010.6	6,5
1/2" BSPP	DN 12	12,2	48	15	24	-	27	10	400.012.6	7,8
1/2" BSPP	DN 16	16,2	54	15	29	-	27	10	400.016.6	9,9
3/4" BSPP	DN 16	16,2	55	17	29	-	32	10	400.018.6	11,8
3/4" BSPP	DN 20	20,3	58	17	36	-	34	10	400.020.6	16,6
1" BSPP	DN 20	20,3	62	20	36	-	41	10	400.022.6	22,1
1" BSPP	DN 25	24,0	65	20	42	-	40	5	400.025.6	22,8

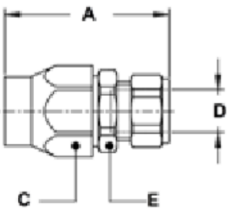


Figure C8, nickel plated brass click fitting, pipe compression.

PIPE	ANAFLEX	ID HOSE	DIMENSIONS IN MM					STANDARD	ARTICLE	WEIGHT
diameter	Size (DN)	(MM)	A	B	C	D	E	PACKAGE	NUMBER	(Kg/100)
Ø 15 mm	DN 16	16,2	60	-	29	15	27	10	400.015.8	9,9
Ø 18 mm	DN 16	16,2	61	-	29	18	32	10	400.018.8	11,8
Ø 18 mm	DN 20	20,3	66	-	36	18	34	10	400.020.8	16,6
Ø 22 mm	DN 20	20,3	67	-	36	22	41	10	400.022.8	22,1