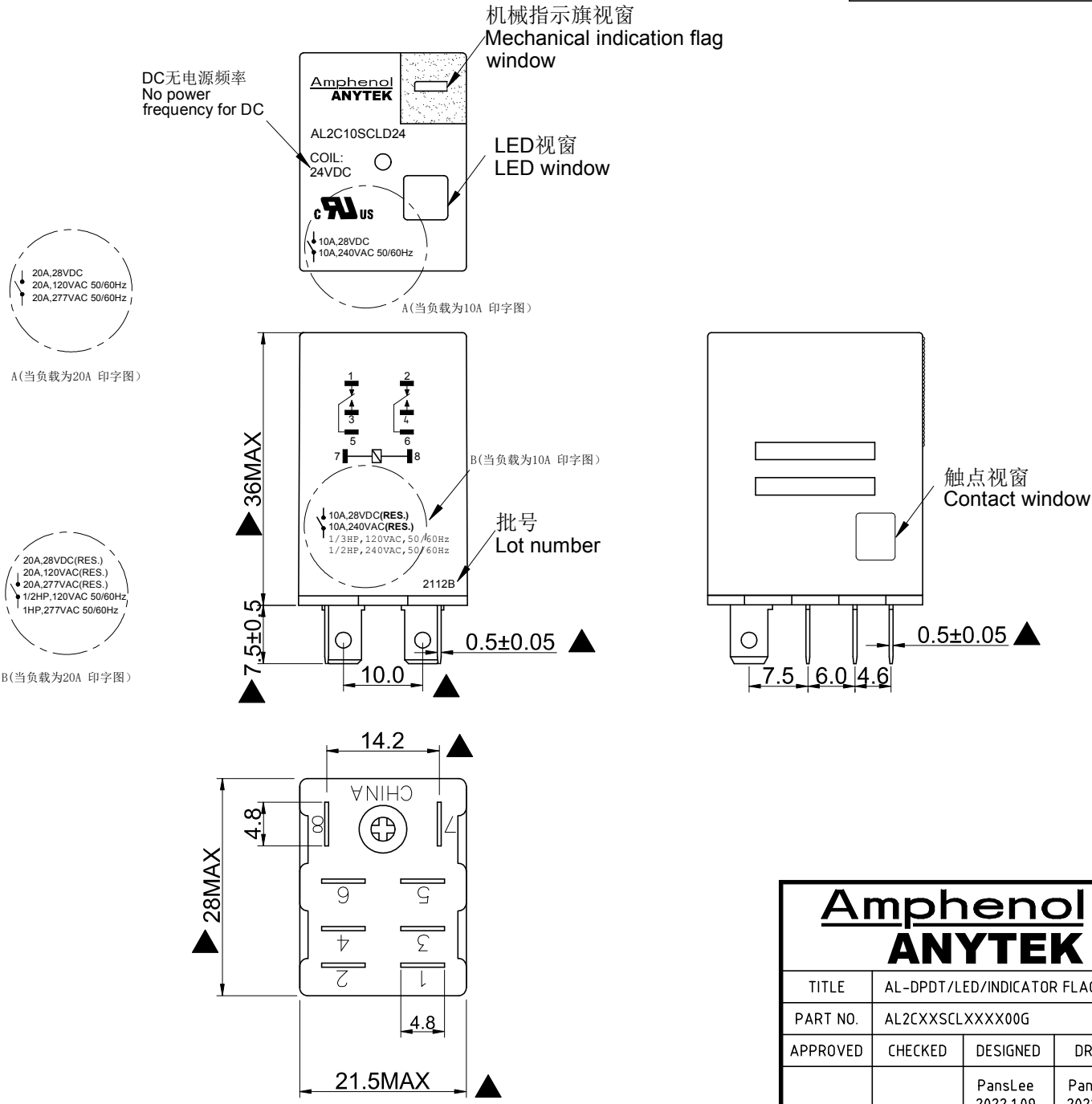


RoHS Compliant

| Rev. | SIGN | DATE | DESCRIPTION | APPROVER |
|------|------|----------|-------------------|----------|
| A0 | — | 01/09'22 | The first release | PansLee |

THIS IS CAD DRAWING, DO NOT REVISE MANUALLY!!!



| Amphenol ANYTEK | | | | CUSTOMER COPY | |
|---|---------|---|----------------------|--------------------|--|
| ALL RIGHTS RESERVED. REPRODUCTION OR ISSUE TO THIRD PARTIES IN ANY FORM WHATSOEVER IS NOT PERMITTED WITHOUT WRITTEN AUTHORITY FROM THE PROPRIETOR. PROPERTY OF ANYTEK TECHNOLOGY CO., LTD | | | | | |
| TITLE | | AL-DPDT/LED/INDICATOR FLAG INDUSTRIAL RELAY | | | |
| PART NO. | | AL2CXXSCLXXXX00G | | DWG NO. 8AL2C-0001 | |
| APPROVED | CHECKED | DESIGNED | DRAWN | CUST NO. | |
| | | PansLee 2022.1.09 | PansLee 2022.1.09 | Tolerance | |
| | | | | UNIT: mm | |
| | | | | SCALE: NONE | |
| | | | | X.X ±0.10 | |
| | | | | X.XX ±0.05 | |
| | | | | X.XXX ±0.005 | |
| | | | | X° ±1° | |
| SHEET: 01/02 | | | | REV.: A0 | |

RoHS Compliant

| Rev. | SIGN | DATE | DESCRIPTION | APPROVER |
|--|------|----------|-------------------|----------|
| A0 | — | 01/09'22 | The first release | PansLee |
| THIS IS CAD DRAWING, DO NOT REVISE MANUALLY!!! | | | | |

线圈参数,在23 °C环境下 Coil parameters (At 23 °C)

| 线圈规格代码 Coil voltage code | 线圈额定电压 Rated coil voltage | 线圈电阻 Coil resistance (Ω) ±10% | 线圈功率 Power Consumption | 动作电压 Operate voltage | 释放电压 Release voltage | 线圈最大电压 Max. allowable voltage |
|-----------------------------|------------------------------|-------------------------------|------------------------|----------------------|----------------------|-------------------------------|
| D6 | 6 VDC | 40 | 0.89~1.1 W | 75% Maximum | 10% Minimum | 110% Maximum |
| D12 | 12 VDC | 160 | | | | |
| D24 | 24 VDC | 650 | | | | |
| D48 | 48 VDC | 2600 | | | | |
| D110 | 110 VDC | 11000 | | | | |
| A6 | 6 VAC | 9.5 | 1.2 VA | 80% Maximum | 15% Minimum | 110% Maximum |
| A12 | 12 VAC | 46 | | | | |
| A24 | 24 VAC | 180 | | | | |
| A48 | 48 VAC | 770 | | | | |
| A110 | 110 VAC | 3830 | | | | |
| A120 | 120 VAC | 4430 | | | | |
| A220/230 | 220/230 VAC | 15000 | | | | |
| A240 | 240 VAC | 15700 | | | | |

注Annotation: 交流线圈电源频率50~60Hz. The frequency of AC Coil is 50 ~ 60 Hz.

触点参数Contact parameters

- 触点形式Contact Form: 2PDT
- 接触电阻Contact Resistance: 100m Ω Max. At 6VDC,100mA
- 触点材质Contact Material: AgSnO2
- 阻性负载Resistive load : 20A@28VDC/120VAC/277VAC(10A@28VDC/240VAC),50~60Hz
- 马达负载Motor load: 1/2hp@120VAC,1hp@277VAC,50~60Hz
- 电气寿命Electrical Life: 5万操作次数, 在额定负载情况下, 50,000 operations at Rated Resistive Load.
- 机械寿命Mechanical Life: 1000万操作次数, 在无负载情况下, 10,000,000 operations at No Load condition.

综合性能参数Comprehensive performance parameter

- 绝缘电阻Insulation resistance:500M Ω Min. at 500VDC
- 介质耐压(初始) Dielectric strength (initial) : 同极触点间1000VAC,1Min;
异极触点间1500VAC,1Min;
线圈触点间1500VAC,1Min
Between open contact 1000VAC,1Min;
Between different pole 1500VAC,1Min;
Between contact and coil 1500VAC,1Min
- 动作时间Operate time: 20ms Max.
- 释放时间Release time: 20ms Max.

使用环境Service environment

- 使用环境温度Ambient temperature: -25~+50 °C
- 湿度Ambient humidity: 5%-85%
- 抗冲击Shock resistance : 破坏性 Destruction: 1,000 m/s²
故障 Malfunction: 200 m/s²

- 耐振动Vibration resistance: 破坏性 Destruction: 10 to 55 Hz, 0.5 mm single amplitude (1.0 mm double amplitude)
故障 Malfunction: 10 to 55 Hz, 0.5 mm single amplitude (1.0 mm double amplitude)

其它Other

- 基座材质The base material:UL94V-0, 酚醛塑料 Phenolic molding compound, 耐温temperature resistance: 155 °C
- 防尘外壳Dust-proof cover: 透明PC Transparent PC
- 重量Weight: About 36g
- 安规认证Safety Approval: CUL US UL证书号码 File Number: E521873
- 重点尺寸Critical dimension:



继电器规格号示例Part Number Description:
AL 2C XX S C L XXXX 00G



| | | | | | | |
|---|---|----------------------|----------------------|----------------------|--------------|--------------|
| Amphenol ANYTEK | | | | CUSTOMER COPY | | |
| ALL RIGHTS RESERVED. REPRODUCTION OR ISSUE TO THIRD PARTIES IN ANY FORM WHATSOEVER IS NOT PERMITTED WITHOUT WRITTEN AUTHORITY FROM THE PROPRIETOR. PROPERTY OF ANYTEK TECHNOLOGY CO., LTD | | | | | | |
| TITLE | AL-DPDT/LED/INDICATOR FLAG INDUSTRIAL RELAY | | | | | |
| PART NO. | AL2CXXSCLXXXX00G | | | DWG NO. | 8AL2C-0001 | |
| APPROVED | CHECKED | DESIGNED | DRAWN | CUST NO. | Tolerance | |
| | | PansLee 2022.1.09 | PansLee 2022.1.09 | | UNIT: mm | X.X ±0.10 |
| | | | | | SCALE: NONE | X.XX ±0.05 |
| | | | | | SHEET: 02/02 | X.XXX ±0.005 |
| | | | | REV.: A0 | X° | ±1° |