

Rittal – The System.

Faster – better – everywhere.

Mounting plate for PK – PK 9550.000

Date : Mar 7, 2019

ENCLOSURES

POWER DISTRIBUTION

CLIMATE CONTROL

IT INFRASTRUCTURE

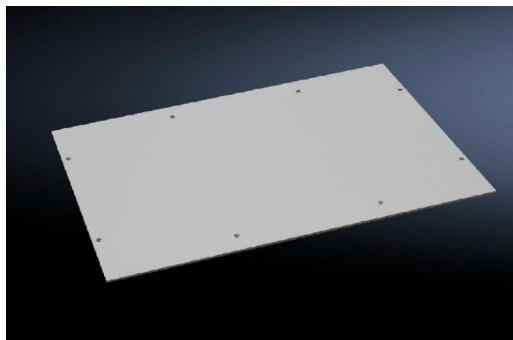
SOFTWARE & SERVICES

FRIEDHELM LOH GROUP



Mounting plate for PK – PK 9550.000

created: 07.03.2019 on www.rittal.com/com-en



Product description

Description:	For individual interior installation.
Material:	2.5 mm melamine phenol-coated laminated paper.
Colour:	RAL 7035
Supply includes:	Mounting plate Self-tapping assembly screws

Product features

To fit:	Enclosure type: PK Width: = 360 mm Height: = 254 mm
Mounting plate:	Width: 331 mm Height: 220 mm
Packs of:	4 pc(s).
Weight/pack:	1.25 kg
EAN:	4028177140134
Customs tariff number:	39269097
ETIM 6.0:	EC000213

ETIM 5.0: EC000213

eCl@ss 8.0/8.1: 27409216

eCl@ss 7.0/7.1: 27189234

eCl@ss 6.0/6.1: 27189234

eCl@ss 5.1/5.1.4: 27189234

Product description: PK Mounting plate, WH: 331x220 mm
