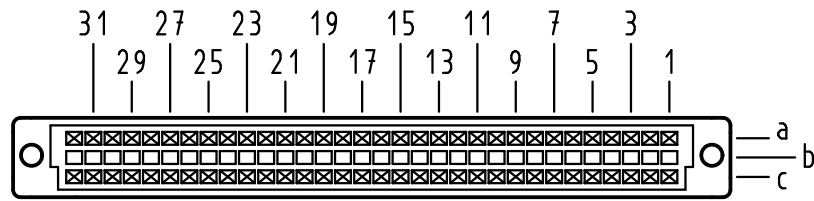


Alle Rechte vorbehalten/ All rights reserved

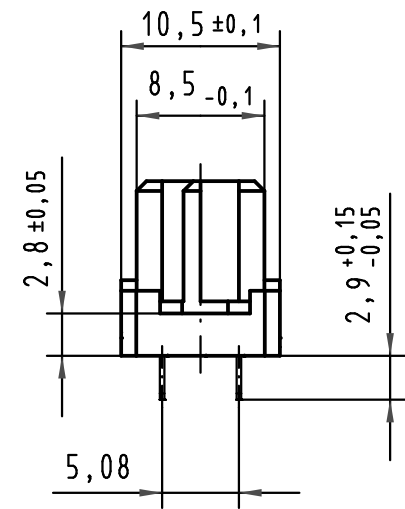
X
Kontaktanordnung
contact arrangement



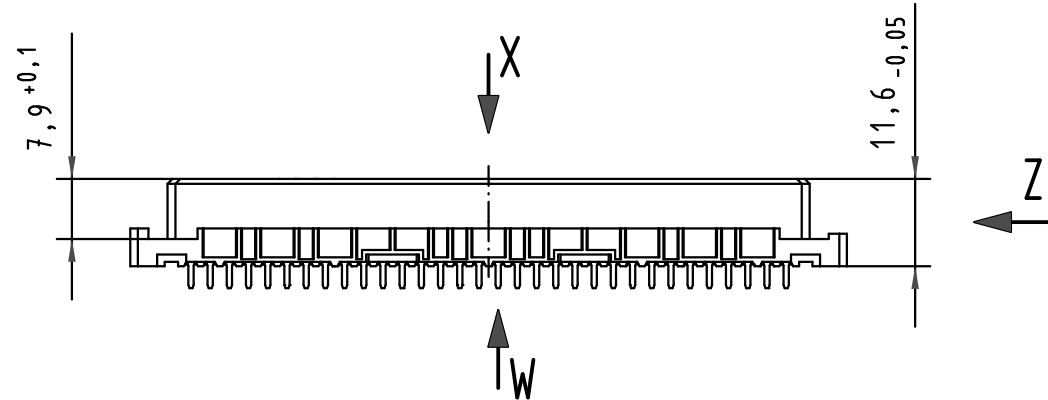
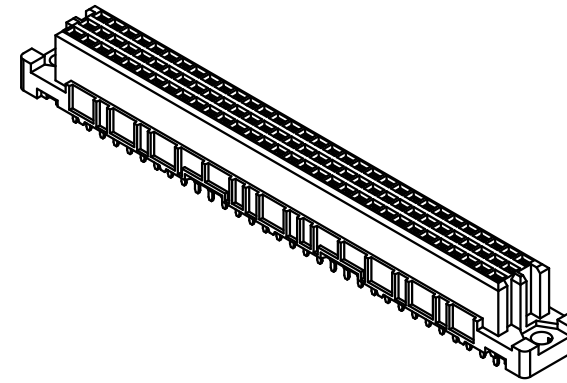
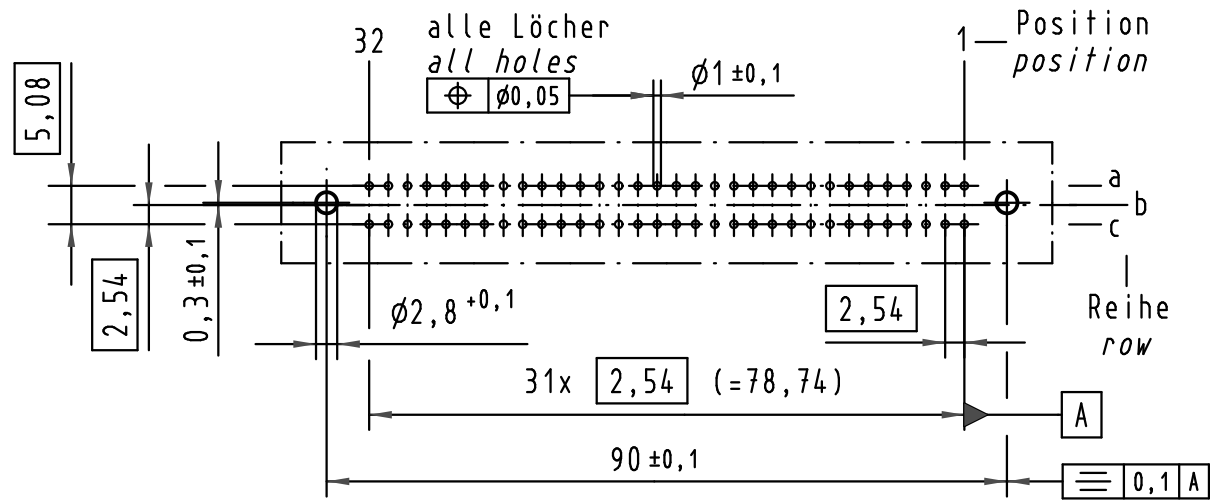
64 Einlöt-Kontakte
64 solder-contacts

- ☒ = Einlöt-Kontakt
= solder-contact
- = kinked Einlöt-Kontakt
= kinked solder-contact
- = Kontaktposition nicht belegt
= position without contact

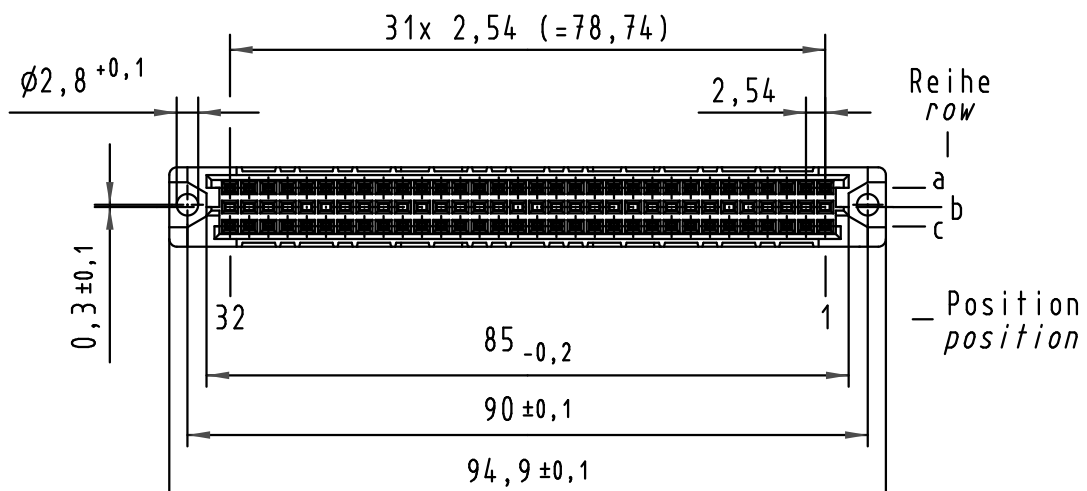
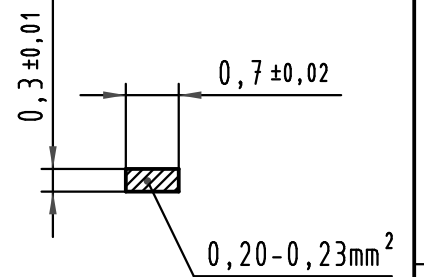
Z
2:1



X
(Lochbild)
(board drillings)



W
10:1
Querschnitt der
Lötanschlüsse:
cross-section of
solder terminations:



09 03 264 <u>7</u> 824	3	Au über/over Ni
09 03 264 <u>6</u> 824	2	Au über/over Ni
09 03 264 <u>2</u> 824	1	Au über/over Ni
Bestell-Nr. part-no.	Anforderungsstufe nach IEC performance level acc.to IEC	Kontaktoberfläche contact plating

All Dimensions in mm Original Size DIN A 3			Techn. Character.			Nicht tolerierte Maßel/Free size tolerances IEC 60603-2			
				Dat.	Name	Maßstab/Scale			
				Detail.	03.09.99	Rie.	1:1		
				Insp.	03.09.99	Pa.	2:1		
				Stand.			10:1		
34650	13.08.07	Cla				har-bus C Federleiste Einlöt 2,9 , 64 pol. har-bus C female connector solder 2,9 , 64 pol.			
34158	18.01.07	LehT							
30815	19.02.02	Rie.							
26083									
Mod.	Dat.	Name	HARTING Electronics GmbH & Co. KG D-32339 ESPELKAMP						
						TB 09 03 264 x824		Blatt/ page	
						Sub.			