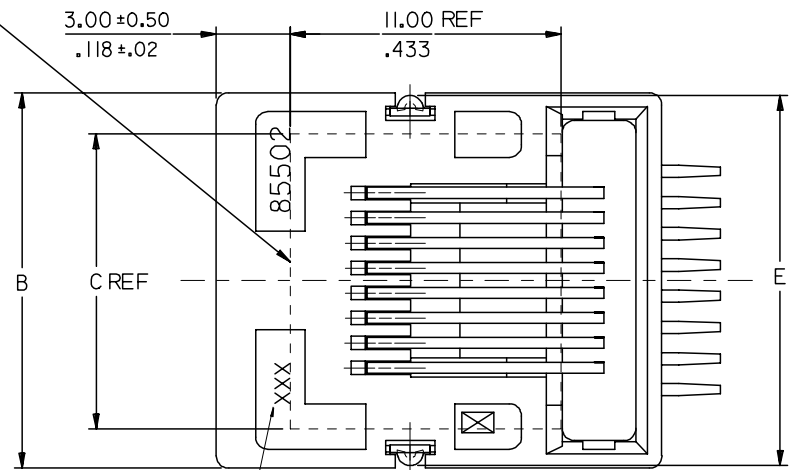
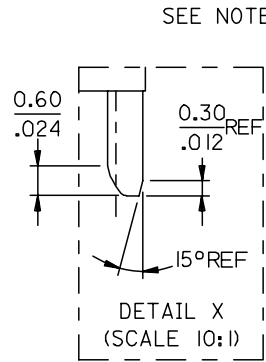
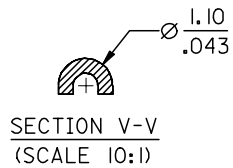
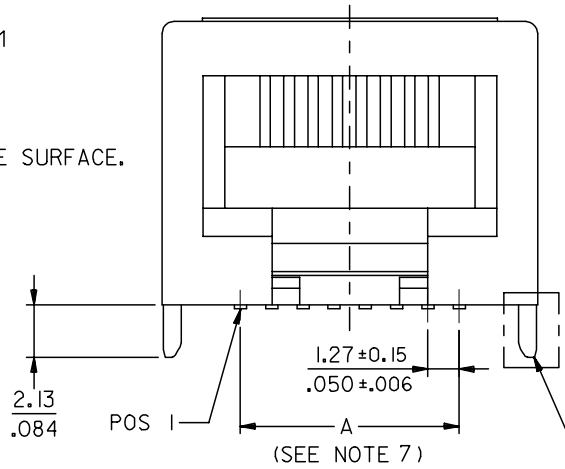
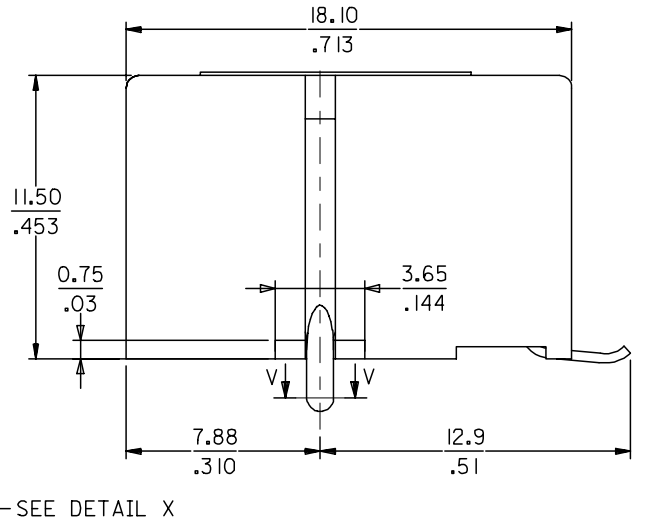


10 9 8 7 6 5 4 3 2 1



NOTE 9.



(SEE NOTE 7)

SEE DETAIL X

NOTES:

1- MATERIAL:

HOUSING: LCP GLASS FILLED UL 94V0, COLOUR: BLACK

TERMINAL: BRASS PLATED WITH:

0.00127/.000050 MIN GOLD IN CONTACT AREA,
0.00190/.000075 MIN PURE TIN IN TAIL AREA,
BOTH OVER 0.00127/.000050 MIN NICKEL OVERALL.

SOLDER PEGS: BRASS PLATED WITH 0.0020/.000078 MIN TIN.

2- JACK FOR MATING WITH F.C.C.68 PLUGS.
(MOLEX 90075 SERIES).

3- PRODUCT SPECIFICATION: MOLEX PS-85502-001

4 - POLYIMIDE ADHESIVE TAPE FOR PICK & PLACE SURFACE.
THICKNESS: 125 μm /4921 μm

5 - PACKAGING SPECIFICATION: MOLEX PK-85502.
(BLISTER PACKAGING).

6 - COPLANARITY OF SIGNAL LEADS: 0.10/.004

7 - SEE DIMENSIONS IN CHART ON SHEET 2.

8 - P.C. BOARD THICKNESS: 1.57/.062

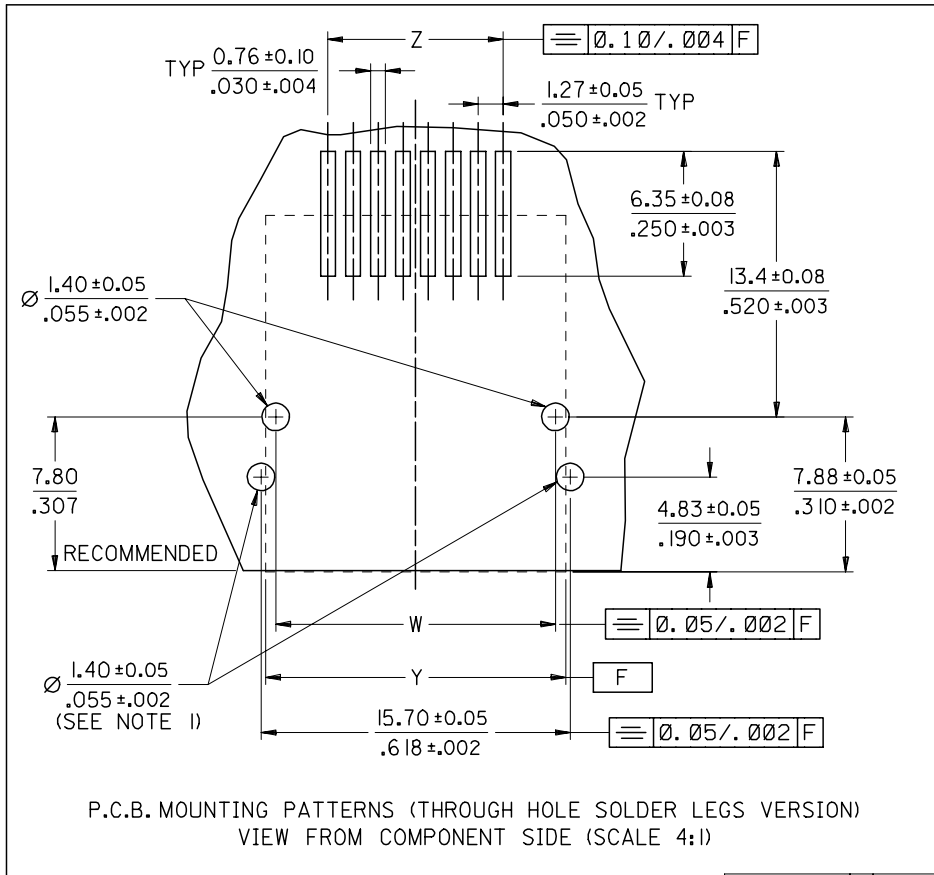
9- MANUFACTURING I.D. CAN BE EITHER MG, MXF OR MXI.

10- APPLICATION SPEC: AS-85513-001

MODIFIED MATL EC NO: E2007-0717 DRWN:DBYRNES CHKD: APPR:EOMAHONY 2007/02/15 2007/02/15 2007/02/15	QUALITY SYMBOLS ▽=0 ▽=0	GENERAL TOLERANCES (UNLESS SPECIFIED)		DIMENSION STYLE MM/IN		SCALE 5:1	DESIGN UNITS METRIC	THIRD ANGLE PROJECTION		
		4 PLACES	± ---	± ---	DRAWN BY	DATE	TITLE R/A LOW PROFILE P.C.JACK SMT; 4,6 & 8 CKTS WITH THROUGH HOLE SOLDER PEGS			
		3 PLACES	± ---	± .010	CHECKED BY	DATE				
		2 PLACES	± 0.25	± .014	EOMAHONY	2006/06/15	MOLEX INCORPORATED			
1 PLACE	± 0.35	± ---	EOMAHONY	2006/06/15						
		ANGULAR ± 2 °		MATERIAL NO.		DOCUMENT NO.		SHEET NO.		
DRAFT WHERE APPLICABLE MUST REMAIN WITHIN DIMENSIONS		SEE CHART SHT 2		SD-85502-103		1 OF 2				
THIS DRAWING CONTAINS INFORMATION THAT IS PROPRIETARY TO MOLEX INCORPORATED AND SHOULD NOT BE USED WITHOUT WRITTEN PERMISSION										

9 8 7 6 5 4 3 2 1

NOTE 1:
TWO OPTIONAL HOLES FOR THE 8 POSITION-VERSION FOR THE COMPATIBILITY WITH THE INTERNAL SHIELDED VERSION.



STANDARD VERSION	PART NUMBERS FOR SMT JACK WITH THROUGH HOLE SOLDER PEGS							
	HOUSING COLOR	POS 4	TOOLED	POS 6	TOOLED	POS 6	TOOLED	POS 8
BLACK	4 CKTS		4 CKTS		6 CKTS		8 CKTS	
85502-5009		85502-5010		85502-5011		85502-5012		

DIM	TYPE	POS 4	POS 6		POS 8
		4 CKTS	4 CKTS	6 CKTS	8 CKTS
A ±0.15 / .006		3.81 / .150	3.81 / .150	6.35 / .250	8.89 / .350
B		11.18 / .440	13.21 / .520	13.21 / .520	15.24 / .600
C (REF)		8.50 / .335	8.50 / .335	8.50 / .335	12.00 / .472
E		11.08 / .436	13.11 / .516	13.11 / .516	15.14 / .596
W ±0.05 / .002		10.13 / .399	12.16 / .479	12.16 / .479	14.19 / .559
Y (REF)		11.18 / .440	13.21 / .520	13.21 / .520	15.24 / .600
Z ±0.05 / .002		3.81 / .150	3.81 / .150	6.35 / .250	8.89 / .350

P.C.B. MOUNTING PATTERNS (THROUGH HOLE SOLDER LEGS VERSION)
VIEW FROM COMPONENT SIDE (SCALE 4:1)

QUALITY SYMBOLS	▽=0	△=0
REV	DESCRIPTION	DATE
B	SEE SHEET 1	2007/02/15
	EC NO: E2007-0717	2007/02/15
	DRWN:DBYRNES	2007/02/15
	CHKD:	
	APPR:EOMAHONY	2007/02/15

GENERAL TOLERANCES (UNLESS SPECIFIED)	DIMENSION STYLE MM/IN	SCALE 5:1	DESIGN UNITS METRIC	THIRD ANGLE PROJECTION
4 PLACES ± --- ± ---	DRAWN BY DATE DB 2006/06/12	TITLE RIGHT ANGLE LOW PROFILE SMT PC JACK WITH THROUGH HOLE SOLDER PEGS		
3 PLACES ± --- ± .010	CHECKED BY DATE EOMAHONY 2006/06/15			
2 PLACES ± 0.25 ± .014	APPROVED BY DATE EOMAHONY 2006/06/15	MOLEX INCORPORATED		
1 PLACE ± 0.35 ± ---	ANGULAR ± 2 °			
DRAFT WHERE APPLICABLE MUST REMAIN WITHIN DIMENSIONS	MATERIAL NO.	DOCUMENT NO. SD-85502-103	SHEET NO. 2 OF 2	
	SIZE A3	THIS DRAWING CONTAINS INFORMATION THAT IS PROPRIETARY TO MOLEX INCORPORATED AND SHOULD NOT BE USED WITHOUT WRITTEN PERMISSION		