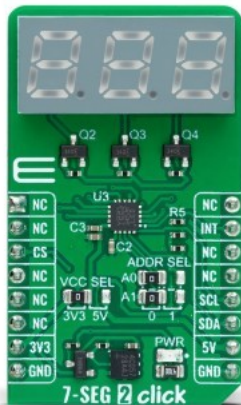


## 7-SEG 2 Click



PID: MIKROE-6005

**7-SEG 2 Click** is a compact add-on board that represents an easy solution for adding a numeric or hexadecimal display to your application. This board features the LDT-M2804RI, a three-digit seven-segment display from Lumex. The display has a 0.28" height, red LED segments, gray faces, and white diffused segments. All three digits come with a following dot point that can be used as a decimal point in displaying the number values. This Click board™ makes the perfect solution for the development of many applications requiring a visible display or others that display numerical/textual information.

7-SEG 2 Click is fully compatible with the mikroBUS™ socket and can be used on any host system supporting the [mikroBUS™](#) standard. It comes with the [mikroSDK](#) open-source libraries, offering unparalleled flexibility for evaluation and customization. What sets this [Click board™](#) apart is the groundbreaking [ClickID](#) feature, enabling your host system to seamlessly and automatically detect and identify this add-on board.

Mikroe produces entire development toolchains for all major microcontroller architectures.

Committed to excellency, we are dedicated to helping engineers bring the project development up to speed and achieve outstanding results.



ISO 27001: 2013 certification of informational security management system.  
 ISO 14001: 2015 certification of environmental management system.  
 OHSAS 18001: 2008 certification of occupational health and safety management system.



ISO 9001: 2015 certification of quality management system (QMS).

## Specifications

Type	LED Segment
Applications	Can be used for the development of many applications requiring a visible display or others that display numerical/textual information
On-board modules	LDT-M2804RI - three-digit seven-segment display from Lumex
Key Features	Three-digit, 7-segment display with a following dot point, red LED segments, brightness adjustment for each segment separately, common anode LEDs, open LED detection, overtemperature protection, pattern fault interrupt, start of frame interrupt, and more
Interface	I2C
ClickID	Yes
Compatibility	mikroBUS™
Click board size	M (42.9 x 25.4 mm)
Input Voltage	3.3V or 5V

## Resources

[mikroBUS™](#)

[mikroSDK](#)

[Click board™ Catalog](#)

[Click Boards™](#)

[ClickID](#)

## Downloads

[7-SEG 2 click example on Libstock](#)

[LED1202 datasheet](#)

[7-SEG 2 click 2D and 3D files](#)

[7-SEG 2 click schematic](#)

[LDT-M2804RI datasheet](#)

Mikroe produces entire development toolchains for all major microcontroller architectures.

Committed to excellency, we are dedicated to helping engineers bring the project development up to speed and achieve outstanding results.



ISO 27001: 2013 certification of informational security management system.  
 ISO 14001: 2015 certification of environmental management system.  
 OHSAS 18001: 2008 certification of occupational health and safety management system.



ISO 9001: 2015 certification of quality management system (QMS).