

PLEASE CHECK WWW.MOLEX.COM FOR LATEST PART INFORMATION

Part Number: **0443000800**
Status: **Active**
Overview: Micro-Fit Connector System
Description: Micro-Fit BMI Plug Housing, Dual Row, Panel Mount, 8 Circuits, Black

Documents:

Drawing (PDF)	Test Summary TS-43045-001-001 (PDF)
3D Model	Test Summary TS-43045-002-001 (PDF)
3D Model (PDF)	Test Summary TS-44300-001-001 (PDF)
Product Specification PS-44300-001-001 (PDF)	Test Summary TS-46235-001-001 (PDF)
Application Specification 443000001-AS-000 (PDF)	Datasheet (PDF)
Packaging Specification PK-44300-001-001 (PDF)	RoHS Certificate of Compliance (PDF)

Agency Certification

CSA	LR19980
UL	E29179

General

Product Family	Crimp Housings
Series	<u>44300</u>
Application	Power, Wire-to-Board, Wire-to-Wire
Overview	<u>Micro-Fit Connector System</u>
Product Name	Micro-Fit BMI
Taxonomy	Connector Housings
UPC	800754809672

Physical

Circuits (maximum)	8
Color - Resin	Black
Flammability	94V-0
Gender	Plug
Glow-Wire Capable	No
Lock to Mating Part	No
Material - Resin	Polyester
Net Weight	2.630/g
Number of Rows	2
Packaging Type	Bag
Panel Mount	Yes
Pitch - Mating Interface	3.00mm
Polarized to Mating Part	Yes
Stackable	No
Temperature Range - Operating	-40° to +105°C

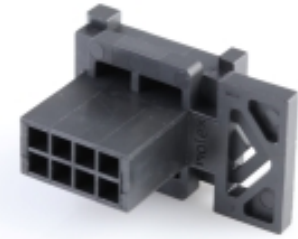
Solder Process Data

Lead-freeProcess Capability	N/A
-----------------------------	-----

Material Info

Reference - Drawing Numbers

Application Specification	443000001-AS-000
Packaging Specification	PK-44300-001-001
Product Specification	PS-44300-001-001
Sales Drawing	SD-44300-001-001
Test Summary	TS-43045-001-001, TS-43045-002-001, TS-44300-001-001, TS-46235-001-001



Series image - Reference only

EU ELV

Not Relevant

EU RoHS

Compliant

REACH SVHC

Not Contained Per -
D(2022)4187-DC (10
June 2022)

Halogen-Free

Status

Not Low-Halogen

For more information, please visit [Contact US](#)

China ROHS

ELV

RoHS Phthalates

China RoHS

Green Image

Not Relevant

Not Contained

Search Parts in this Series

[44300 Series](#)

Mates With

Micro-Fit BMI Receptacle Housing [44133](#) .
Micro-Fit BMI Receptacle Header [44764](#) ,
[44769](#)

Use With

Micro-Fit 3.0 Crimp Terminals [43031](#) . Micro-
Fit 3.0 Pre-Crimped Lead [214762](#) , [214763](#)

This document was generated on 10/18/2022

PLEASE CHECK WWW.MOLEX.COM FOR LATEST PART INFORMATION