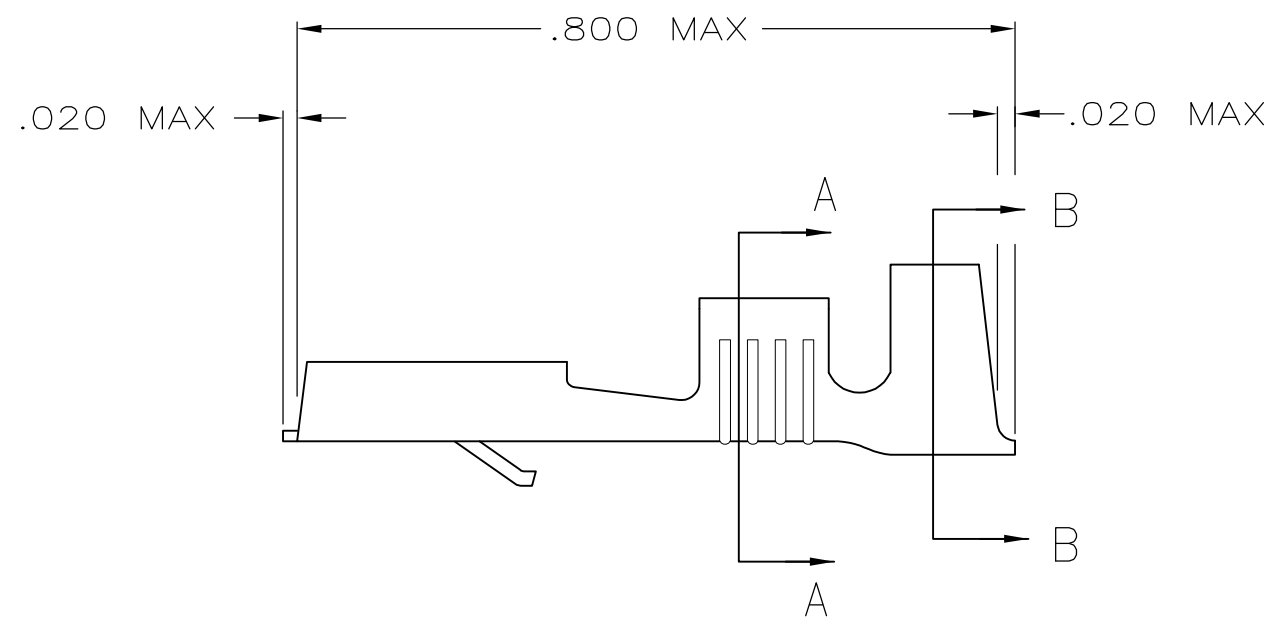
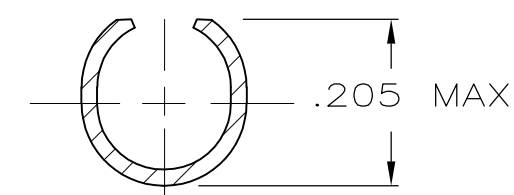
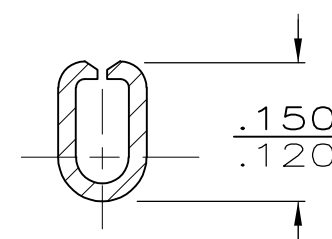


THIS DRAWING IS UNPUBLISHED. RELEASED FOR PUBLICATION  
 © COPYRIGHT - By - ALL RIGHTS RESERVED.

LOC	DIST	REVISIONS					
AF	50	P	LTR	DESCRIPTION	DATE	DWN	APVD
		B1		REVISED PER ECO-11-004917	11MAR11	RK	HMR



- 1 SUPPLIED IN LOOSE PIECE FORM.
- 2 SEE STRIP DWG. 42281 FOR ADDITIONAL DETAILS.



<b>OBSOLETE</b>	SILVER	BRASS	.120-.160 DIA	#18-#14 AWG	.032	<del>42282-3</del>
	TIN	BRASS	.120-.160 DIA	#18-#14 AWG	.032	42282-2
	-	BRASS	.120-.160 DIA	#18-#14 AWG	.032	42282-1
	FINISH	MATERIAL	INSUL RANGE	WIRE SIZE	MATING TAB THK ±.001	PART NO

THIS DRAWING IS A CONTROLLED DOCUMENT.		DWN JR RUTH 6/16/92	<b>TE</b> TE Connectivity				
DIMENSIONS: MM[INCHES]		CHK MS FEHER 6/16/92					
		APVD J GILLESPIE 6/16/92					
		PRODUCT SPEC					
TOLERANCES UNLESS OTHERWISE SPECIFIED:		APVD J GILLESPIE 6/16/92	RECEPTACLE, FASTIN-FASTON, .250 SERIES				
0 PLC ± - 1 PLC ± - 2 PLC ± - 3 PLC ± .015 4 PLC ± - ANGLES ± -		PRODUCT SPEC					
MATERIAL SEE TABLE		APPLICATION SPEC	SIZE A3	CAGE CODE 00779	DRAWING NO C-42282	RESTRICTED TO -	
FINISH SEE TABLE		WEIGHT -	CUSTOMER DRAWING		SCALE 5:1	SHEET 1 OF 1	REV B1

THIS DRAWING IS A CONTROLLED DOCUMENT FOR AMP INCORPORATED. IT IS SUBJECT TO CHANGE AND THE CONTROLLING ENGINEERING ORGANIZATION SHOULD BE CONTACTED FOR THE LATEST REVISION.