

ENCLOSURE FOR COMMAND DEVICES, 22MM, ROUND,  
ENCLOSURE MATERIAL METAL, ENCLOSURE TOP PART GRAY,  
3 COMMAND POINTS, UNEQUIPPED, RECESS FOR LABELS,  
BASE MOUNTING, TOP AND BOTTOM 1 X M20 EACH



Figure similar

product brand name	SIRIUS ACT
Product designation	Commanding and signaling devices
Design of the product	Surface-mounted housing

Enclosure:	
Design of the housing	with recess for label
Shape of the enclosure front	rectangular
Material of the enclosure	metal
Number of command points	3
Product component	
• protective collar	No
Color	
• of top part of the enclosure	grey
Mounting type of the enclosure	Vertical / horizontal

General technical data:	
Protection class IP	IP66, IP67, IP69(IP69K)
Degree of protection NEMA rating	NEMA 1, 2, 3, 3R, 4, 4X, 12
Shock resistance	
• for railway applications acc. to DIN EN 61373	Category 1, Class B
Vibration resistance	

- for railway applications acc. to DIN EN 61373

Category 1, Class B

#### Installation/ mounting/ dimensions:

Height	158.4 mm
Width	85 mm
Depth	64 mm
Mounting diameter	22.3 mm

#### Certificates/approvals

General Product Approval	For use in hazardous locations	Declaration of Conformity
--------------------------	--------------------------------	---------------------------



[Herstellereklärung](#)



#### Test Certificates

#### other

[Werksbescheinigungen](#)

[spezielle Prüfbescheinigungen](#)

[Bestätigungen](#)

#### Further information

##### Information- and Downloadcenter (Catalogs, Brochures,...)

<http://www.siemens.com/industrial-controls/catalogs>

##### Industry Mall (Online ordering system)

<https://mall.industry.siemens.com/mall/en/en/Catalog/product?mlfb=3SU18530AA000AB1>

##### Cax online generator

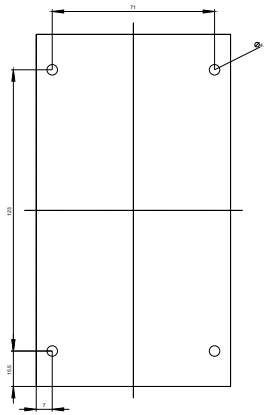
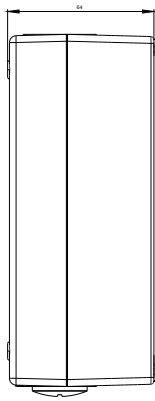
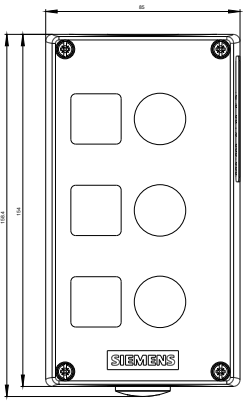
<http://support.automation.siemens.com/WW/CAXorder/default.aspx?lang=en&mlfb=3SU18530AA000AB1>

##### Service&Support (Manuals, Certificates, Characteristics, FAQs,...)

<https://support.industry.siemens.com/cs/ww/en/ps/3SU18530AA000AB1>

##### Image database (product images, 2D dimension drawings, 3D models, device circuit diagrams, EPLAN macros, ...)

[http://www.automation.siemens.com/bilddb/cax\\_de.aspx?mlfb=3SU18530AA000AB1&lang=en](http://www.automation.siemens.com/bilddb/cax_de.aspx?mlfb=3SU18530AA000AB1&lang=en)



last modified:

08.04.2016