

ENCLOSURE FOR 4-POSITION SELECTOR SWITCH, ID KEY SWITCH AND COORDINATE SWITCH 22MM, ROUND, ENCLOSURE MATERIAL PLASTIC, ENCLOSURE TOP PART GRAY, 1 COMMAND POINT PLASTIC, UNEQUIPPED



Figure similar

product brand name	SIRIUS ACT
Product designation	Commanding and signaling devices
Design of the product	Enclosure for 4-position selector switches, coordinate switches, ID key-operated switches and sensor switches

Enclosure:	
Design of the housing	Command point in center
Shape of the enclosure front	Square
Material of the enclosure	plastic
Number of command points	1
Product component	
• protective collar	No
Color	
• of top part of the enclosure	grey
Mounting type of the enclosure	Vertical / horizontal

General technical data:	
Protection class IP	IP66, IP67, IP69(IP69K)
Degree of protection NEMA rating	NEMA 1, 2, 3, 3R, 4, 4X, 12
Shock resistance	
• for railway applications acc. to DIN EN 61373	Category 1, Class B

Vibration resistance	
<ul style="list-style-type: none"> for railway applications acc. to DIN EN 61373 	Category 1, Class B

Mechanical data:	
Cable entry type	Without

Installation/ mounting/ dimensions:	
Height	85 mm
Width	85 mm
Depth	64 mm
Mounting diameter	22.3 mm

Certificates/approvals		
General Product Approval	Declaration of Conformity	Test Certificates



[Werksbescheinigung](#)

Test Certificates	other
spezielle Prüfbescheinigung	Bestätigungen
n	

Further information

Information- and Downloadcenter (Catalogs, Brochures,...)

<http://www.siemens.com/industrial-controls/catalogs>

Industry Mall (Online ordering system)

<https://mall.industry.siemens.com/mall/en/en/Catalog/product?mlfb=3SU18011AA001AA1>

Cax online generator

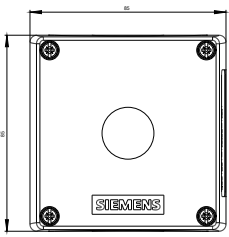
<http://support.automation.siemens.com/WW/CAXorder/default.aspx?lang=en&mlfb=3SU18011AA001AA1>

Service&Support (Manuals, Certificates, Characteristics, FAQs,...)

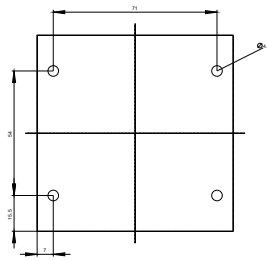
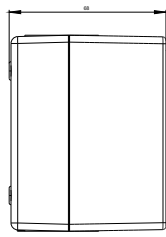
<https://support.industry.siemens.com/cs/ww/en/ps/3SU18011AA001AA1>

Image database (product images, 2D dimension drawings, 3D models, device circuit diagrams, EPLAN macros, ...)

http://www.automation.siemens.com/bilddb/cax_de.aspx?mlfb=3SU18011AA001AA1&lang=en



last modified:



12.05.2016