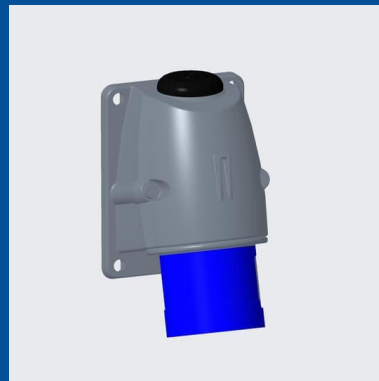


316BS9

# Wall mounted inlet

## 2CMA193300R1000



Wall mounted inlet, earthing sleeve position 9h, rated current 16A, IP44 splashproof, 3-poles+earth, frequency 50-60 Hz, color code Blue

## GENERAL

<b>Product Name</b>	Wall mounted inlet
<b>Product ID</b>	2CMA193300R1000
<b>Function</b>	Wall mounted inlet
<b>EAN</b>	73926969301
<b>Catalog Description</b>	Surface inlet, 9h, 16A, IP44, 3P+E
<b>Country of Origin</b>	Czech Republic (CZ)
<b>E-Number Finland</b>	2417170
<b>E-Number Norway</b>	2417170
<b>E-Number Sweden</b>	E2417170
<b>Standards</b>	IEC 60309-1, -2
<b>RoHS Status</b>	Following EU Directive 2011/65/EU

## TECHNICAL

<b>Product Main Type</b>	EBS
<b>Color</b>	Blue
<b>Number of Poles</b>	4
<b>Clock Position</b>	9Hour
<b>Rated Current</b>	16 ampere
<b>Rated Voltage</b>	200 ... 250 volt
<b>Frequency</b>	50 hertz 60 hertz
<b>Degree of Protection</b>	IP44
<b>Cable Cross-Section</b>	1.5...4 mm <sup>2</sup>
<b>Housing Material</b>	Plastic (PA)
<b>Plug Angle</b>	Angled
<b>Product Group</b>	Easy&Safe

## DIMENSIONS

<b>Product Net Width</b>	78 millimetre
<b>Product Net Height</b>	68 millimetre
<b>Product Net Length</b>	118 millimetre
<b>Product Net Depth</b>	118 millimetre
<b>Product Net Weight</b>	0.19 kilogram

## PACKAGING

<b>Package Width</b>	154 millimetre
<b>Package Height</b>	378 millimetre
<b>Package Gross Weight</b>	1.9 kilogram
<b>Package Length</b>	182 millimetre
<b>Package Units</b>	box 10 piece