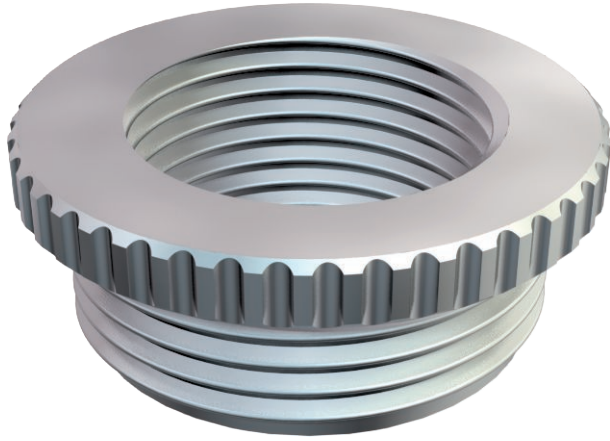


# Technical data sheet

## Reduction, metric thread

Item no. 2089637



Reduction (Part H) in accordance with DIN 46320, with metric thread to DIN EN 60423 or ISO 68.  
\* Prices according to DEL notation.

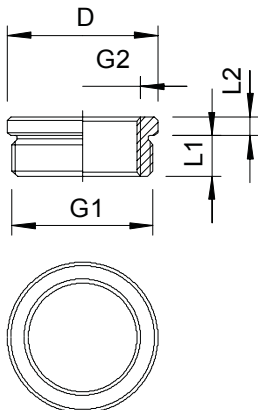
CE M

|      |               |
|------|---------------|
| CuZn | Brass         |
| N    | Nickel-plated |

### Master data

|                          |                  |
|--------------------------|------------------|
| Item no.                 | 2089637          |
| Type                     | 167 R MS M63-50  |
| Description 1            | Reduction        |
| Dimension                | M63-M50          |
| Material                 | Brass            |
| Material symbol          | CuZn             |
| Surface                  | Nickel-plated    |
| Surface symbol           | N                |
| Smallest sales unit (VG) | 10,00 Piece      |
| Weight                   | 10,09 kg/100 pc. |

### Technical data



|                                    |                                     |
|------------------------------------|-------------------------------------|
| Dimension D                        | 64,00 mm                            |
| Dimension L1                       | 10,00 mm                            |
| Dimension L2                       | 4,00 mm                             |
| explosion-proof                    | <input type="checkbox"/>            |
| Thread type: External thread       | Metric                              |
| Thread type: Internal thread       | Metric                              |
| External thread                    | M63                                 |
| Thread dimension, metric, external | 63,00                               |
| Internal thread                    | M50                                 |
| Thread dimension, metric, internal | 50,00                               |
| Thread length                      | 10,00 mm                            |
| Nickel-plated                      | <input checked="" type="checkbox"/> |