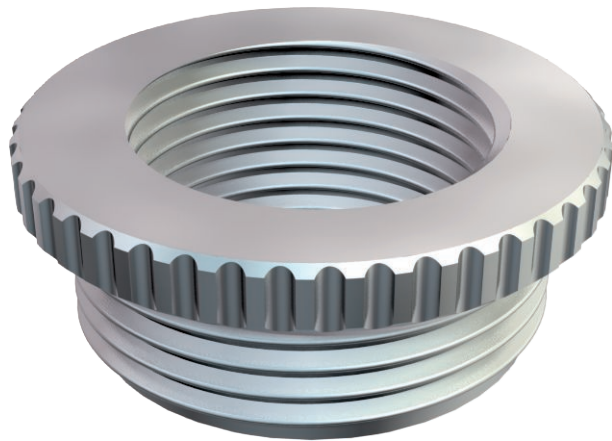


Technical data sheet

Reduction, metric thread

Item no. 2089505



Reduction (Part H) in accordance with DIN 46320, with metric thread to DIN EN 60423 or ISO 68.
* Prices according to DEL notation.

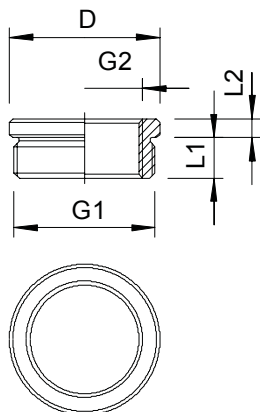
CE M

| | |
|------|---------------|
| CuZn | Brass |
| N | Nickel-plated |

Master data

| | |
|--------------------------|-----------------|
| Item no. | 2089505 |
| Type | 167 R MS M16-12 |
| Description 1 | Reduction |
| Dimension | M16-M12 |
| Material | Brass |
| Material symbol | CuZn |
| Surface | Nickel-plated |
| Surface symbol | N |
| Smallest sales unit (VG) | 50,00 Piece |
| Weight | 0,88 kg/100 pc. |

Technical data



| | |
|------------------------------------|-------------------------------------|
| Dimension D | 20,00 mm |
| Dimension L1 | 6,00 mm |
| Dimension L2 | 2,50 mm |
| explosion-proof | <input type="checkbox"/> |
| Thread type: External thread | Metric |
| Thread type: Internal thread | Metric |
| External thread | M16 |
| Thread dimension, metric, external | 16,00 |
| Internal thread | M12 |
| Thread dimension, metric, internal | 12,00 |
| Thread length | 6,00 mm |
| Nickel-plated | <input checked="" type="checkbox"/> |