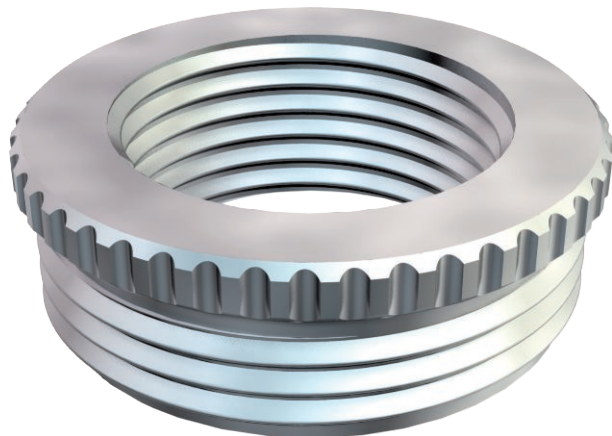


# Technical data sheet

## Reduction, PG thread

Item no. 2089408



Reduction (Part H) to DIN 46320, with Pg thread to DIN 40430, as a transition from a PG thread hole to a smaller cable gland.

\* Prices according to DEL notation.

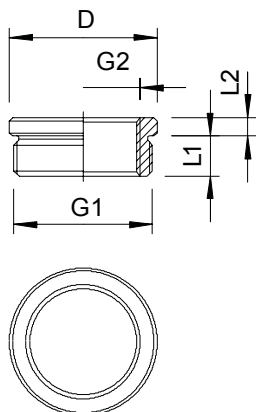
CE Pg

CuZn	Brass
N	Nickel-plated

### Master data

Item no.	2089408
Type	167 R MS PG42-36
Description 1	Reduction
Dimension	PG42-PG36
Material	Brass
Material symbol	CuZn
Surface	Nickel-plated
Surface symbol	N
Smallest sales unit (VG)	25,00 Piece
Weight	6,75 kg/100 pc.

### Technical data



Dimension D	57,00 mm
Dimension L1	10,00 mm
Dimension L2	4,00 mm
explosion-proof	<input type="checkbox"/>
Thread type: External thread	PG
Thread type: Internal thread	PG
External thread	Pg 42
Thread dimension, PG, external	42,00
Internal thread	Pg 36
Thread dimension, PG, internal	36,00
Thread length	10,00 mm
Nickel-plated	<input checked="" type="checkbox"/>