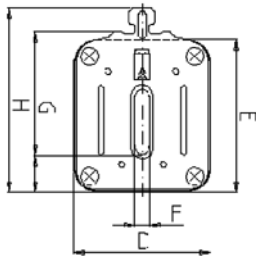
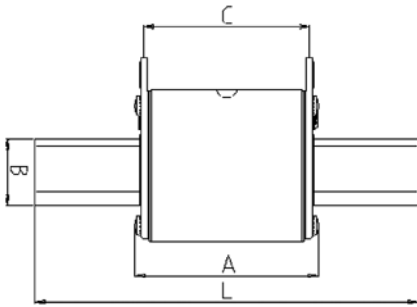
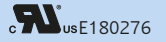


690 V

NH 2



Verpackungseinheit / Packing unit: 3 Stück / 3 pieces

Betriebsklasse / Class
gRL (gS)

IEC 60 269-4
VDE 0636-4
UL 248-13

| Bemessungs- spannung Rated Voltage | Artikel Nr. Article No | In/A | Länge Length | | | | | | | | | | |
|--|---------------------------|-------|-----------------|----|----|----|------|----|----|----|----|-----|----|
| | | | A | B | C | D | E | F | G | H | I | L | |
| V | | A | mm | mm | mm | mm | mm | mm | mm | mm | mm | mm | mm |
| 690 / 700 | 20 212 34 | ≤ 250 | 75 | 20 | 65 | 42 | 51,5 | 6 | 48 | 72 | 14 | 150 | |
| | | ≥ 315 | | | | | | | | | | | |

Bemessungsausschaltvermögen / Rated breaking capacity 200 kA AC 700 V/UL
32 kA DC 500 V

| Bemessungsstrom Rated Current | Artikel Nr. | Gewicht Weight | Bemessungs- spannung Rated Voltage | | Schmelzintegral Pre-Arcing I ² t-Value | Ausschaltintegral Total I ² t-Value | Leistungsabgabe Power Loss |
|----------------------------------|--|-------------------|--|--------------|--|---|-------------------------------|
| | Article No. | | IEC 60269-4 | UL 248-13 | | @ AC 690 V | |
| | mit Kombimelder* with combi indicator | | V | V | A ² s | A ² s | |
| A | | kg / 1 | V | V | A ² s | A ² s | W |
| 160 | 20 212 34.160 | 0,51 | 690 | 700 | 7.400 | 47.000 | 23 |
| 200 | 20 212 34.200 | 0,51 | 690 | 700 | 15.000 | 95.000 | 27 |
| 250 | 20 212 34.250 | 0,51 | 690 | 700 | 30.000 | 190.000 | 30 |
| 315 | 20 212 34.315 | 0,69 | 690 | 700 | 43.000 | 271.000 | 40 |
| 350 | 20 212 34.350 | 0,69 | 690 | 700 | 58.000 | 310.000 | 43 |
| 400 | 20 212 34.400 | 0,69 | 690 | 700 | 85.000 | 442.000 | 48 |
| 450 | 20 212 34.450 | 0,69 | 690 | 700 | 107.000 | 560.000 | 50 |
| 500 | 20 212 34.500 | 0,69 | 690 | 700 | 170.000 | 880.000 | 63 |

* GL-Meldescharter siehe Seiten 138-139
GL switch see pages 138-139

Applikationskoeffizienten / Application coefficients
(Weiterführende Informationen siehe Seite 13 / for more information see page 13)

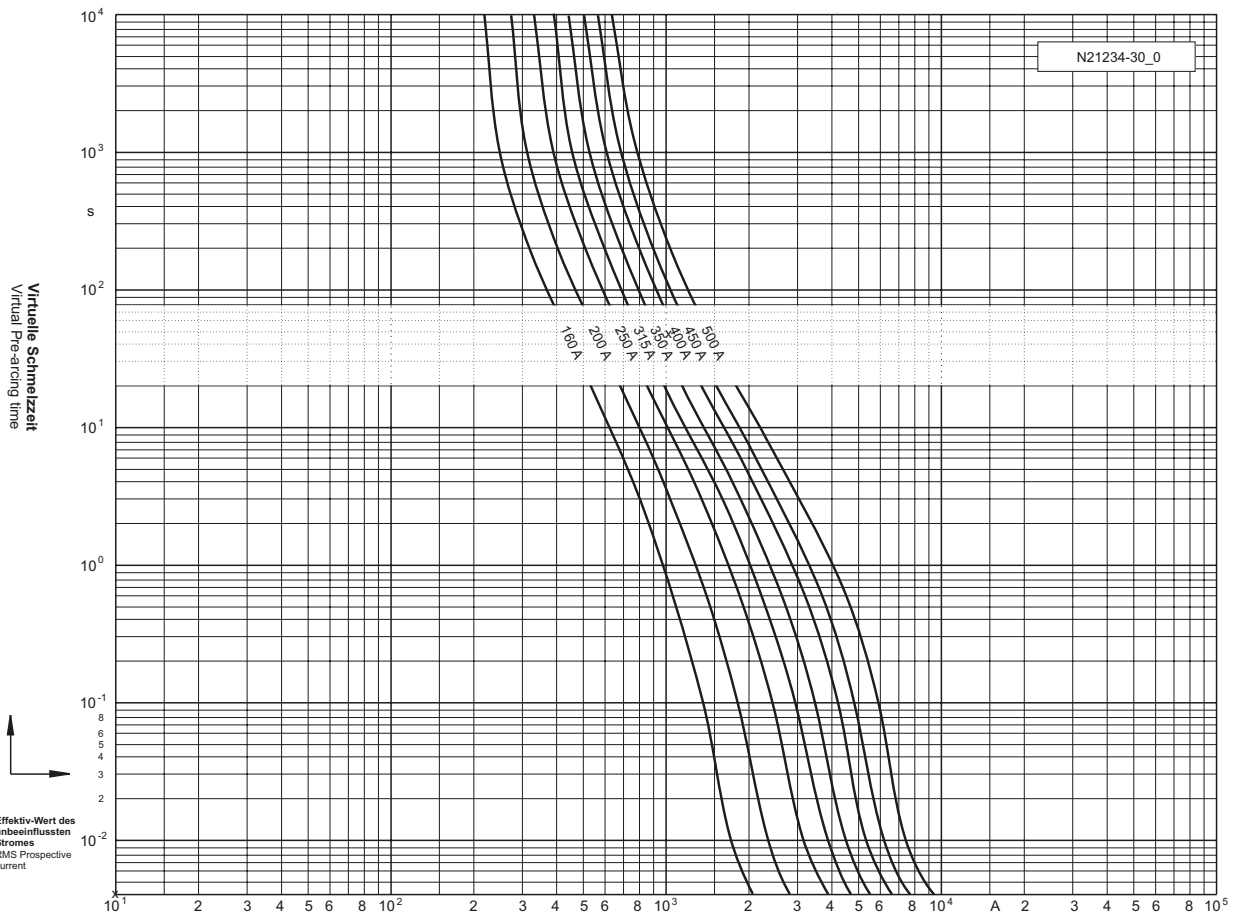
| a | A2 | B1 max. | B2 | Cf3 |
|-----|-----|---------|-----|-----|
| 130 | 1,0 | 1,25 | 0,5 | 0,8 |

Geprüftes DC Schaltvermögen
Tested DC breaking capacity

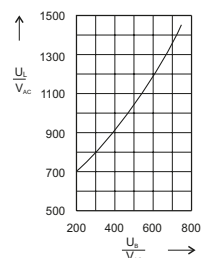
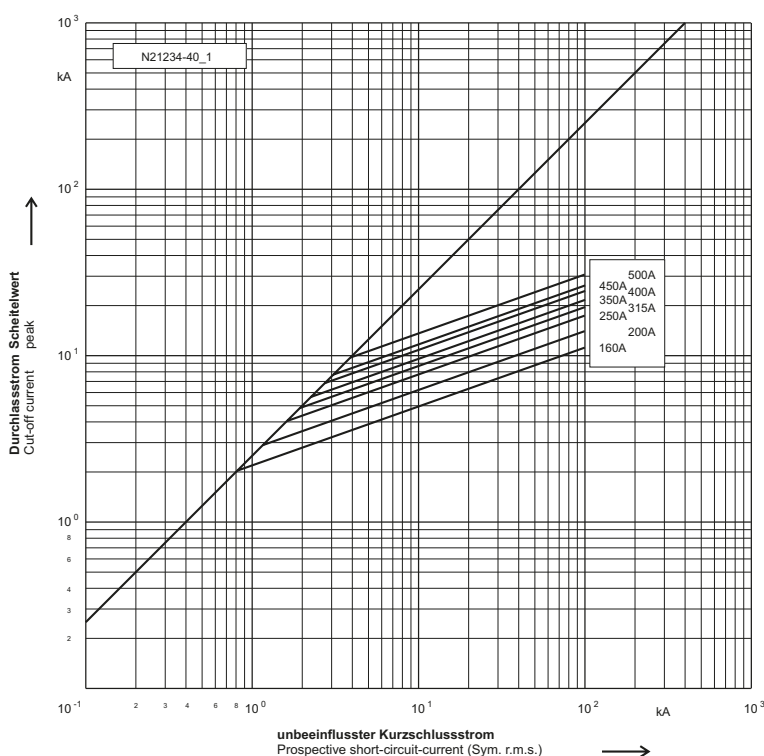
| I _{max} | I _{min} |
|--------------------------------|------------------------------|
| 32 kA @ DC 500V L/R = 12 ms | 2 x I _n @ DC 500V |

690 V **NH 2** c  usE180276

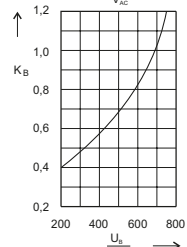
Zeit/Strom-Kennlinien
Time-current characteristics



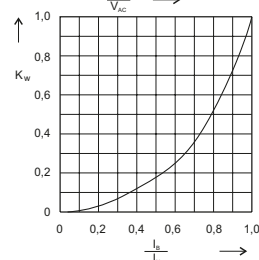
Durchlass-Strom
Cut-off current



Schaltspannungsdiagramm
Arc Voltage-Diagram



Umrechnungsfaktor für den Ausschalt i²t-Wert
Reduction factor for total i²t-value



Umrechnungsfaktor der Leistungsabgabe
Reduction factor for power Loss