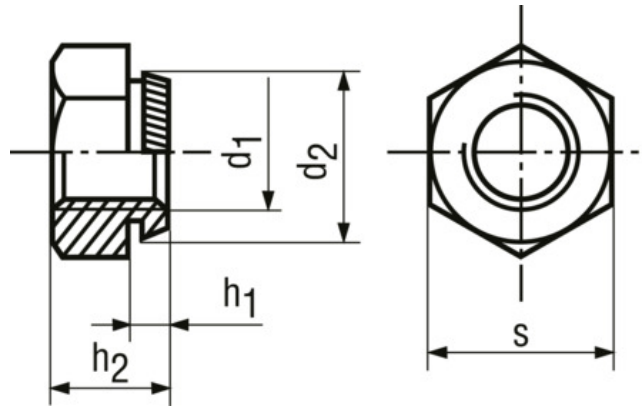


Hex self clinching nuts

BN 640



Additional information

For sheet metal with max. hardness HRB 70

Material

Stainless steel

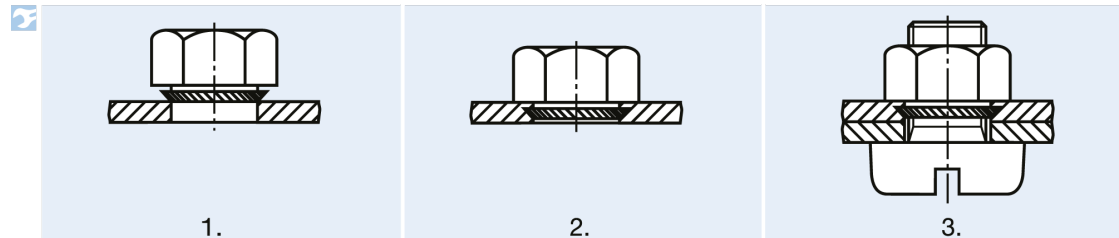
Material type

A1

Assembly notice

1. Centering the nut over the drilled or punched bore.
2. Press in the nut by using either a hammer or a rotating punch.
3. Fasten the screw from the opposite side.

Illustration assembly



Article no.	Thread size (d1)	h1	Bore Ø H11	d2	Sheet thickness min.	h2	s
1242482	M3	0,9	4,5	4,7	1	3	5,5
1242490	M4	0,9	5,5	5,7	1	3,2	7
1242504	M5	0,9	6,5	6,75	1	4	8
1242512	M6	0,9	8	8,25	1	5	10
1242520	M8	1,8	10	10,35	2	6,5	13
1242539	M10	1,8	12,5	12,85	2	8	15
1210122	M12	2,8	14,5	14,85	3	10	17