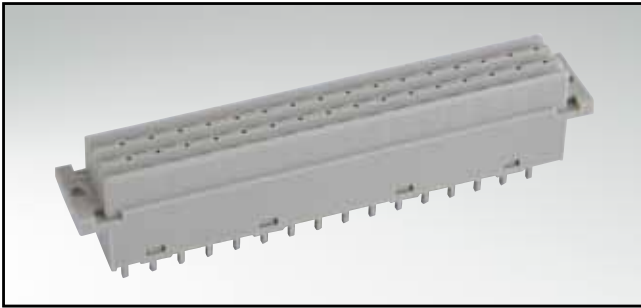


TYPE F

Female connector – straight – 32 and 48 positions

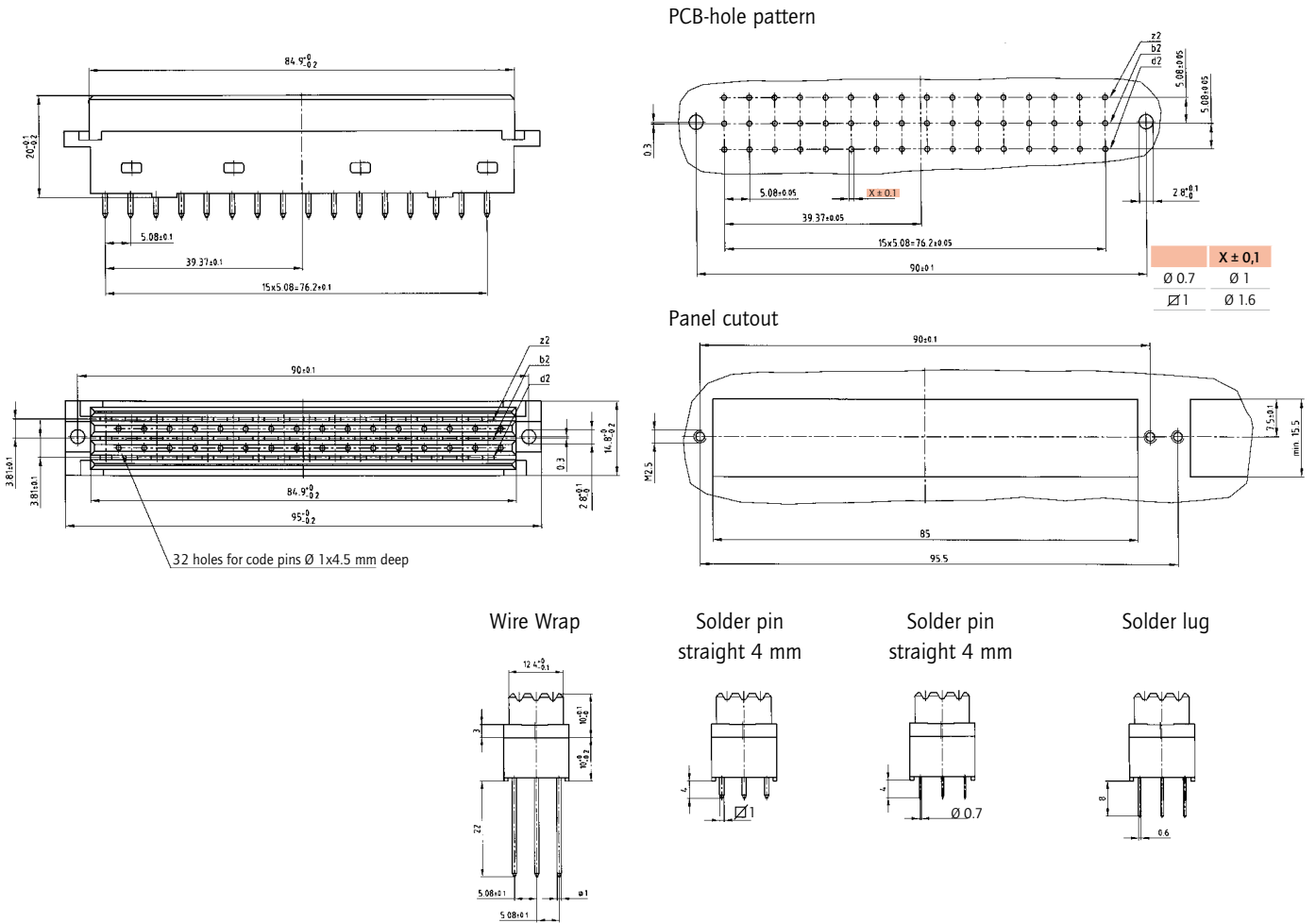


RoHS compliant

DESCRIPTION

- Solder pin, wire wrap and solder lug
- Quality class 3 (also available in quality class 2 or 1)
- Special assembly on request

PRODUCT DRAWING



ORDER DATA

(Dim. = mm)

No. of Pos.	Row	• = contact, + = no contact				Wire Wrap	Solder pin straight $\varnothing 1$ mm	Solder pin straight $\varnothing 0.7$ mm	Solder lug
		Pos.	2	4	6				
32	z	•	•	•	•	122 A 10979 X	122 A 11039 X	122 A 11069 X	122 A 11099 X
	b	•	•	•	•				
	d	+	+	+	+				
32	z	•	•	•	•	122 A 10989 X	122 A 11049 X	122 A 11079 X	122 A 11109 X
	b	+	+	+	+				
	d	•	•	•	•				
48	z	•	•	•	•	122 A 10999 X	122 A 11059 X	122 A 11089 X	122 A 11119 X
	b	•	•	•	•				
	d	•	•	•	•				