

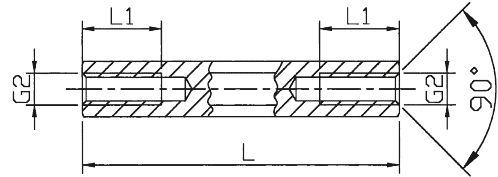
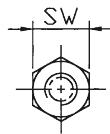
# Support Post (Metric)

## Spacer Bolts DII

[ Brass, metric thread ]

Thread lengths [mm]

| L       | L1 bei M2 | L1 bei M2,5 to M8 |
|---------|-----------|-------------------|
| 5       | 5         | 5                 |
| 6       | 6         | 6                 |
| 8       | 8         | 8                 |
| 10      | 10        | 10                |
| 12      | 6         | 12                |
| 15      | 6         | 15                |
| 18      | 6         | 9                 |
| from 20 | 6         | 10                |



### Spacer bolts

**Type** hexagonal  
**Styles** internal / internal  
**Material** Brass 2.0401 / DMS 100  
**Surface** nickel plated (G3E)  
**Standard Pack** from 100 pcs

Minimum tensile strength: 430 N/mm<sup>2</sup>  
 Tolerance for length dimensions: +/- 0,1 mm

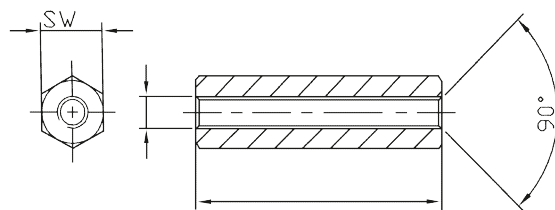
Lengths [mm]

| Order No.      | SW (hexagonal) | Thread | 05 | 06 | 08 | 10 | 12 | 15 | 18 | 20 | 25 | 30 | 35 | 40 | 45 | 50 | 55 | 60 | 65 | 70 | 75 | 80 | 85 | 90 | 95 | 100 |
|----------------|----------------|--------|----|----|----|----|----|----|----|----|----|----|----|----|----|----|----|----|----|----|----|----|----|----|----|-----|
| 111 x (length) | SW 4           | M2     | 05 | 06 | 08 | 10 | 12 | 15 | 18 | 20 | 25 | 30 | 35 | 40 | 45 | 50 |    |    |    |    |    |    |    |    |    |     |
| 1112 x         | SW 4           | M2,5   | 05 | 06 | 08 | 10 | 12 | 15 | 18 | 20 | 25 | 30 | 35 | 40 | 45 | 50 |    |    |    |    |    |    |    |    |    |     |
| 112 x          | SW 5           | M2,5   | 05 | 06 | 08 | 10 | 12 | 15 | 18 | 20 | 25 | 30 | 35 | 40 | 45 | 50 | 55 | 60 |    |    |    |    |    |    |    |     |
| 113 x          | SW 5           | M3     | 05 | 06 | 08 | 10 | 12 | 15 | 18 | 20 | 25 | 30 | 35 | 40 | 45 | 50 | 55 | 60 |    |    |    |    |    |    |    |     |
| 114 x          | SW 5,5         | M3     | 05 | 06 | 08 | 10 | 12 | 15 | 18 | 20 | 25 | 30 | 35 | 40 | 45 | 50 | 55 | 60 | 65 | 70 |    |    |    |    |    |     |
| 115 x          | SW 6           | M3     | 05 |    | 08 | 10 | 12 | 15 | 18 | 20 | 25 | 30 | 35 | 40 | 45 | 50 | 55 | 60 | 65 | 70 | 75 | 80 | 85 | 90 | 95 | 100 |
| 116 x          | SW 7           | M4     | 05 | 06 | 08 | 10 | 12 | 15 | 18 | 20 | 25 | 30 | 35 | 40 | 45 | 50 | 55 | 60 | 65 | 70 | 75 | 80 | 85 | 90 | 95 | 100 |
| 118 x          | SW 8           | M5     |    |    | 08 | 10 | 12 | 15 | 18 | 20 | 25 | 30 | 35 | 40 | 45 | 50 | 55 | 60 | 65 | 70 | 75 | 80 | 85 | 90 | 95 | 100 |
| 119 x          | SW 10          | M6     |    |    |    | 10 | 12 | 15 | 18 | 20 | 25 | 30 | 35 | 40 | 45 | 50 | 55 | 60 | 65 | 70 | 75 | 80 | 85 | 90 | 95 | 100 |
| 1113 x         | SW 13          | M8     |    |    |    |    |    | 15 |    | 20 | 25 | 30 | 35 | 40 | 45 | 50 | 55 | 60 | 65 | 70 | 75 | 80 | 85 | 90 | 95 | 100 |

SW: width across flats

Ordering example: 111 x 10 = DII / Br / SW 4 / M2 x 10

[ Brass, UNC-thread ]



### Spacer bolts

**Type** hexagonal  
**Styles** internal / internal  
**Material** Brass 2.0401 / DMS 100  
**Surface** nickel plated (G3E)  
**Standard Pack** from 100 pcs

All UNC-types are also available in steel, various lengths as well as UNC 6-32, 8-32 UNC and UNC 2-56 threads.

The tolerances for length dimensions: +/- 0.1 mm

Standard lengths [mm]

| Order No.      | SW (hexagonal) | Thread   | 05 | 06 | 08 | 10 | 12 | 15 |
|----------------|----------------|----------|----|----|----|----|----|----|
| 110 x (length) | SW 5           | 4-40 UNC | 05 | 06 | 08 | 10 | 12 | 15 |

SW: width across flats

Ordering example: 110 x 10 = DII / Br / SW 5 / 4-40 UNC x 10 mm