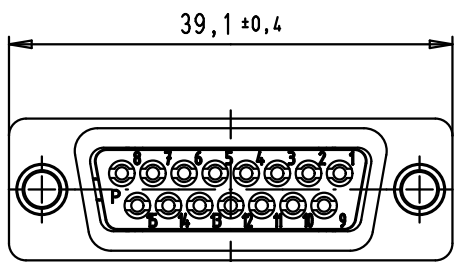
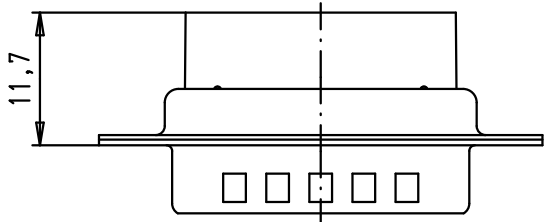
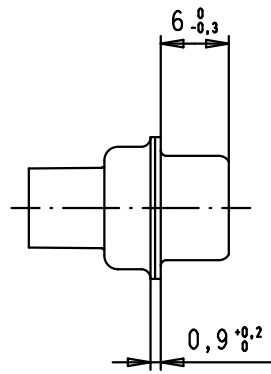
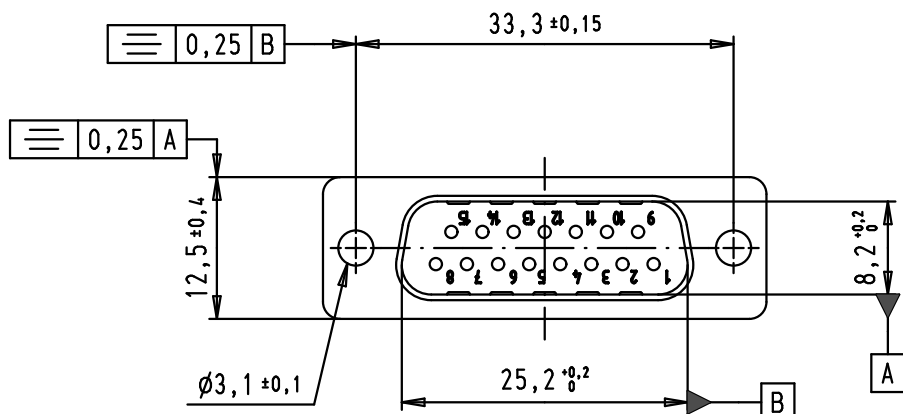
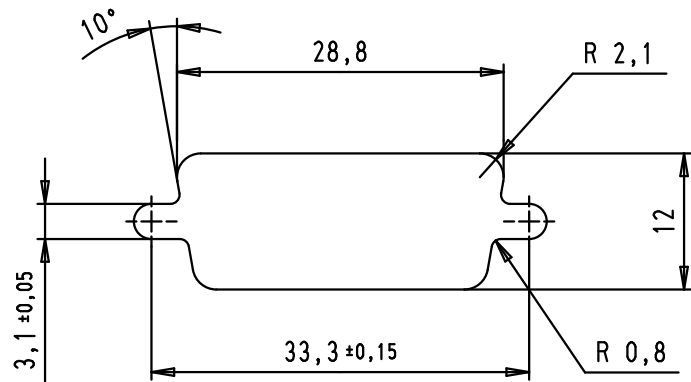




5 4 3 2 1



Panel cut out



A

Mod.	Dot.	Name	Dot.	Name	 D-Sub, male, straight, 15 poles, for crimp contacts AWG 20-24, tin plated shell with dimples	Maßstab/ Scale	
34784	14/02/08	PK	Detail.	09/04/02		CV	1,5:1
33106	22/09/05	JMDR	Insp.				
31571	12/11/03	SH	Stand.				
31526	31/07/03	TCP					
29768	09/04/02	CV					
			HARTING EURL F-95972 Paris			TB 09 67 015 5601 Sub.	
							Blatt/ Page 1 / 2