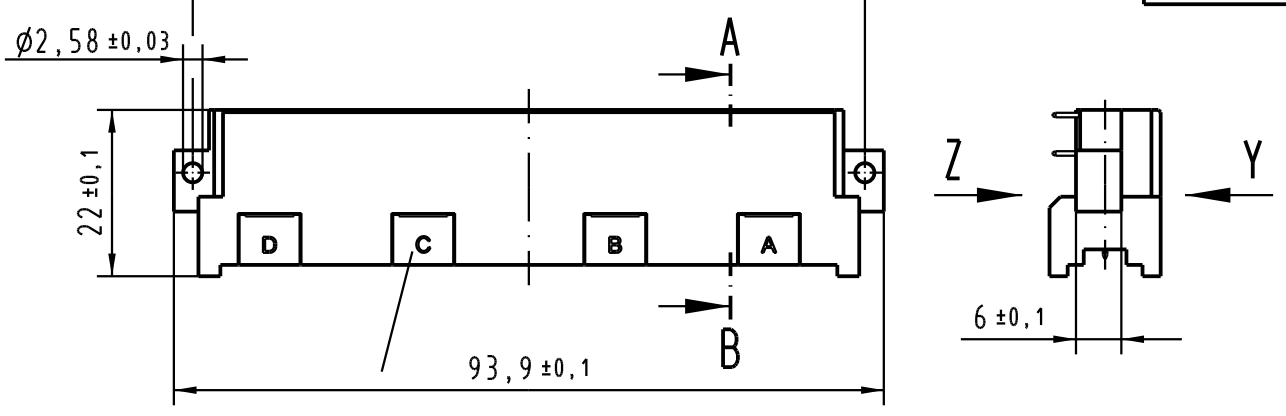
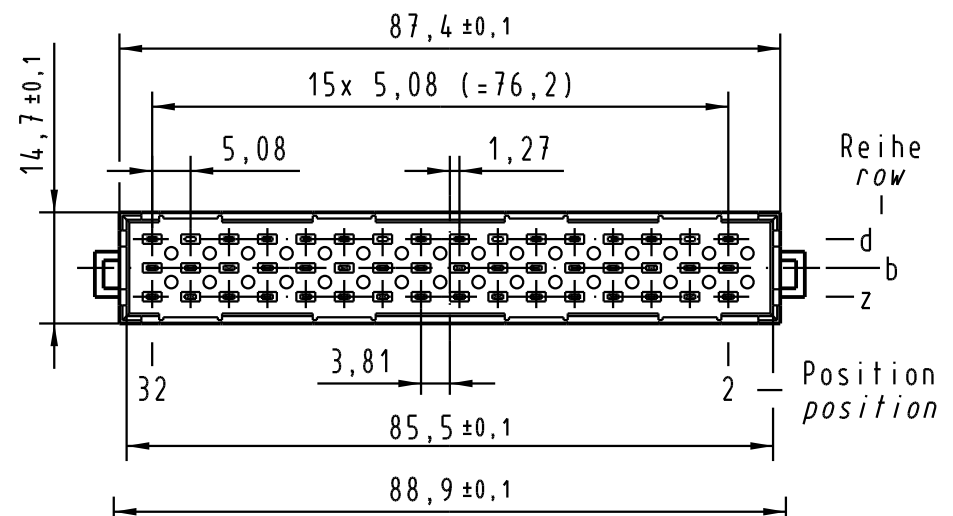
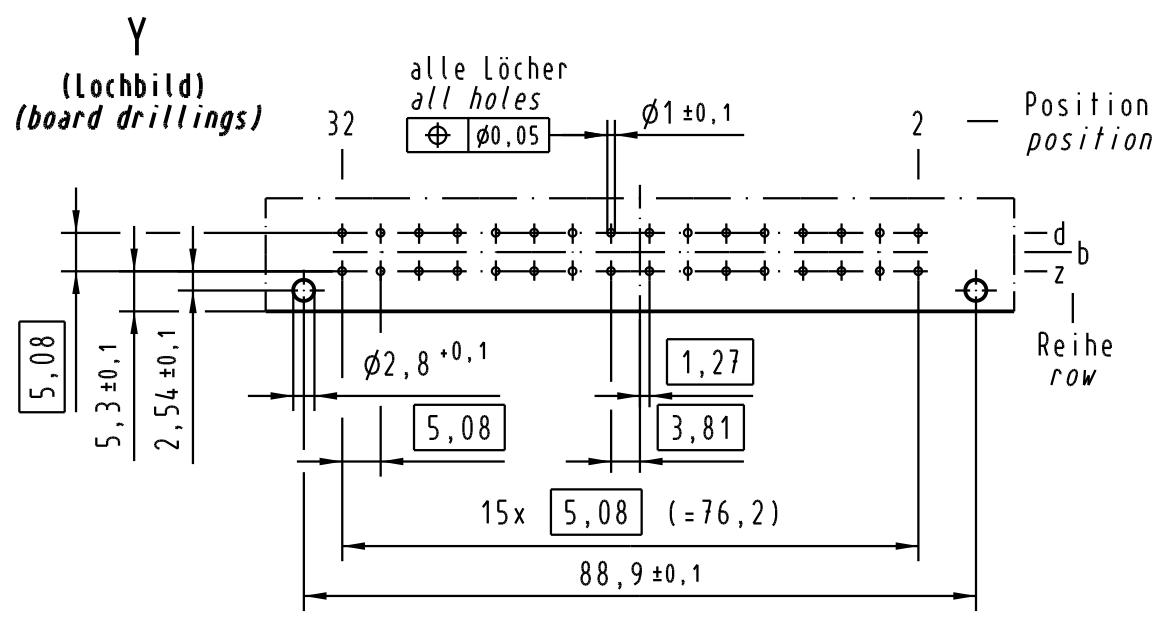
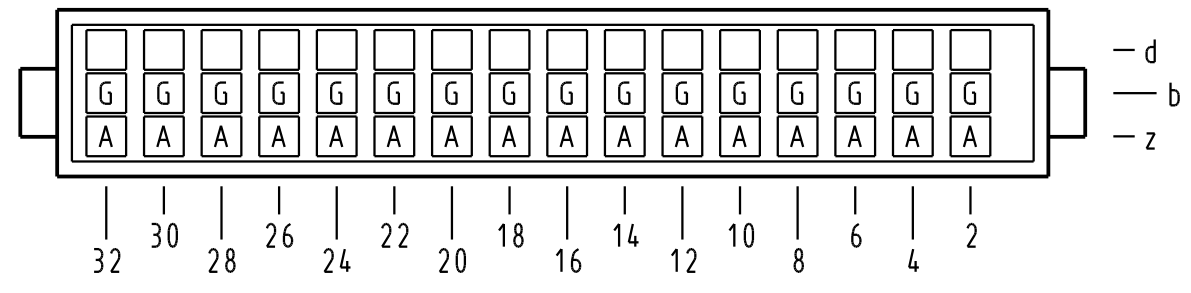
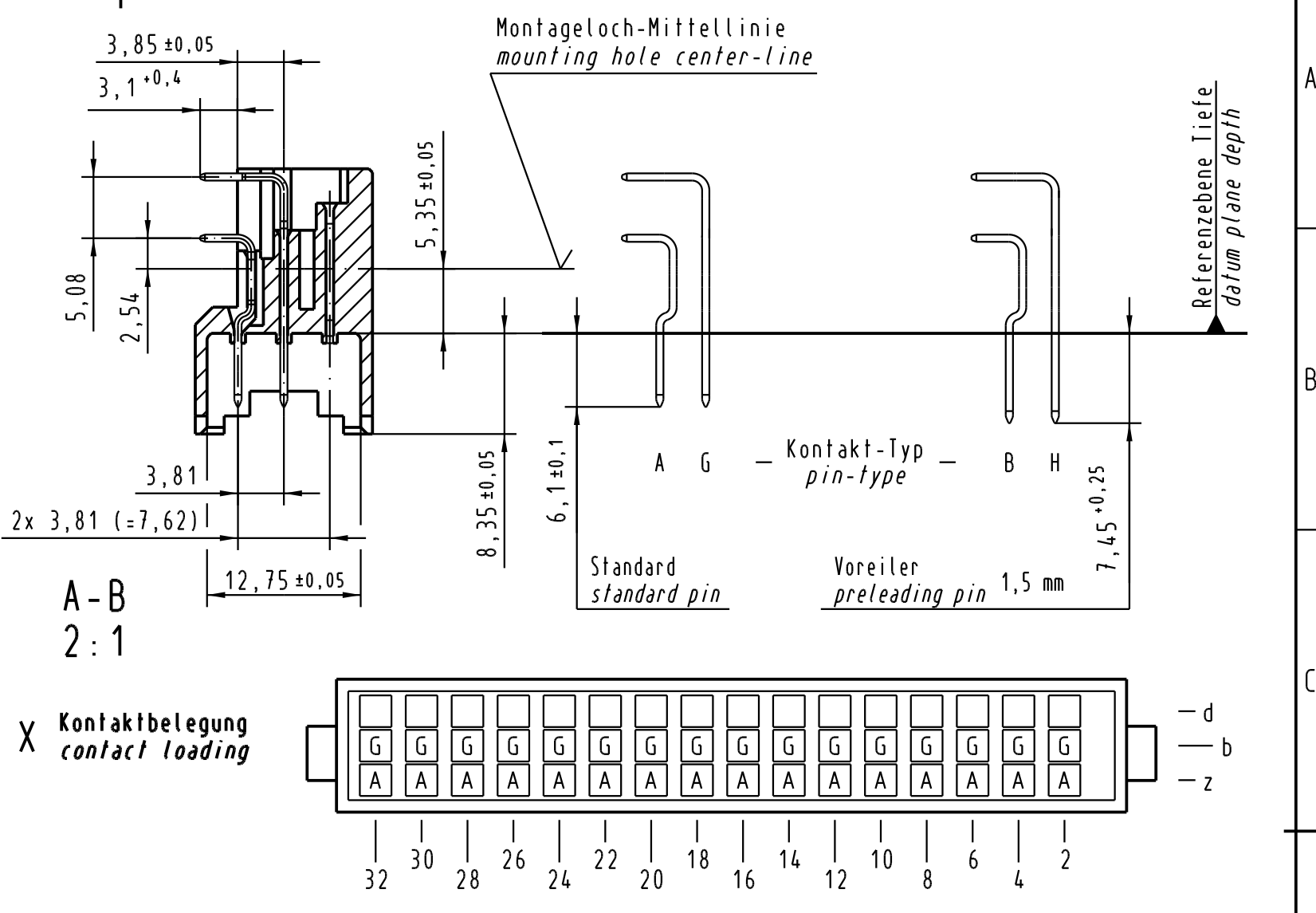


Alle Rechte vorbehalten. All rights reserved



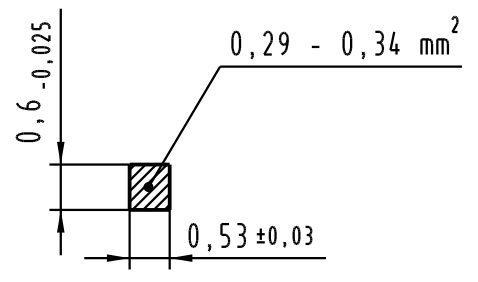
Sollbruchstelle für Kodierung /
breaking point for coding



09 06 132 7901	3	Au über/over Ni
09 06 132 6901	2	Au über/over Ni
09 06 132 2901	1	Au über/over Ni
Bestell-Nr. / part-no.	Anforderungsstufe nach IEC / performance level acc. to IEC	Kontaktoberfläche / contact plating

Z
10:1

Querschnitt der Lötanschlüsse:
cross-section of solder terminations:



All Dimensions in mm Original Size DIN A 3	Techn. Character. IEC 60603-2			Nicht tolerierte Maß / Free size tolerances IEC 60603-2	
		Dat.	Name	Maßstab / Scale	
	Detail.	29.01.02	Rie.	1:1	
	Insp.	29.01.02	kfoe	(2:1)	
	Stand.				
32604	17.03.05	Hil	HARTING Electronics GmbH & Co. KG D-32339 ESPELKAMP		
30386					
Mod.	Dat.	Name			TB 09 06 132 x901 Sub.

Bauform / type F
Messerleiste Einlöt gewinkelt 5,08 32 pol.
male connector solder angled 5,08 32 pol.

TB 09 06 132 x901

Blatt / page